



JAW TYPE 'C' COUPLING

'C' TYPE

These couplings provide standard shaft-to-shaft connection for medium duty range applications. The standard 'C' coupling hub is made of cast iron. The coupling uses a set of SXB cushions instead of a spider. The load cushions are held in place radially by a steel collar which is attached to one of the hubs. The cushion design has the same engineering purpose as the spider design but is more effective in the medium duty applications that 'C' Type couplings address.

PERFORMANCE DATA

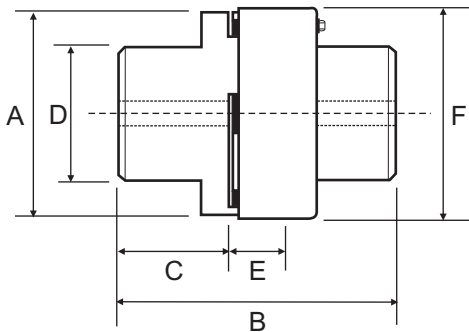


Part No.	Max Bore	Power at 100 RPM kW	Nominal Torque (Nm)		Normal Maximum Speed (RPM)
			Sox	Hytrel	
C226	64.0	3.539	338.0	671.0	4800
C276	73.0	5.581	533.0	1066.0	4200
C280	76.2	8.942	854.0	1567.0	3500
C285	102.0	10.869	1038.0	1882.0	3200
C295	89.0	13.414	1281.0	2563.0	2300
C2955	102.0	22.356	2135.0	4271.0	2300

Power at 100 RPM based on Sox

Normal Maximum Speed is identical for Sox & Hytrel elements.

DIMENSIONAL DATA



Part No.	Bore		A	B	C	D	E	F
	Min	Max						
C226	22.2	64.0	130.8	177.8	69.9	104.6	38.1	139.7
C276	22.2	73.0	157.0	199.9	79.2	127.0	41.4	165.9
C280	31.8	76.2	190.5	199.9	79.2	139.7	41.4	198.4
C285	31.8	102.0	215.9	231.9	95.3	165.1	41.4	225.6
C295	38.1	89.0	231.6	238.3	95.3	158.8	47.8	244.3
C2955	44.5	102.0	231.6	263.7	108.0	180.8	47.8	244.3

C226-C295 - Set of 6 Cushions

C2955-C350 - Set of 10 Cushions