

# //////ZERO-MAX

## TORQUE TENDER

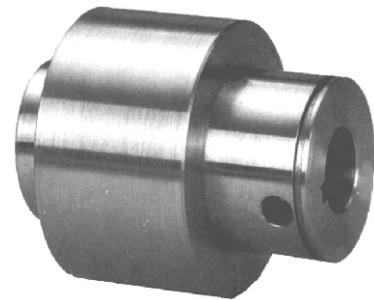
### TORQUE TENDER

Torq-Tenders are positive drive couplings which provide accurate overload protection in many mechanical power transmission systems. When a jam-up or excess overload occurs, Torq-Tenders disengage motor drives. Their effective, versatile design, protects your drive train, motor, and entire system. When load exceeds the rating determined by precision tempered torque springs, the unit's drive key pivots out of a slot to disengage the coupling. Once the overload is removed and speed reduced, the Torq-Tender resets itself automatically. All models are available with actuating pins or actuating disc, which will automatically signal an overload warning or shut the machine systems down entirely.

Part No.	Max Bore Hub	Power at 100 RPM kW	Nominal Torque (Nm)		Normal Maximum Speed (RPM)
			Min	Max	
<i>Standard</i>					
TT1X	12.7	0.071	0.3	6.8	2500
TT2	15.9	0.165	0.5	15.8	2500
TT2X	19.1	0.414	2.0	39.5	2500
TT3	28.6	0.592	2.0	56.5	2500
TT3X	38.1	1.775	33.9	169.5	2500
TT4X	44.5	3.549	84.7	338.9	2500
<i>JF Type</i>					
TT1XJF	12.7	0.071	0.3	6.8	2500
TT2JF	15.9	0.165	0.5	15.8	2500
TT2XJF	19.1	0.414	2.0	39.5	2500
TT3JF	28.6	0.592	2.0	56.5	2500
TT3XJF	38.1	1.775	33.9	169.5	2500
TT4XJF	44.5	3.549	84.7	338.9	2500

Power at 100 RPM based on max torque

### PERFORMANCE DATA



STANDARD UNIT

### SPRING DATA

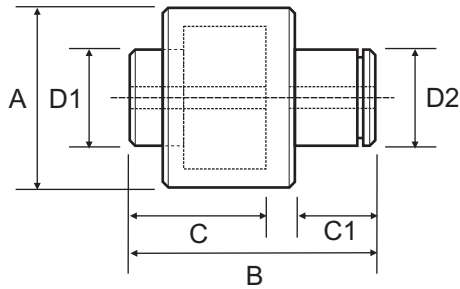
Spring Colour	TT1X Nm	TT2 Nm	TT2X Nm	TT3 Nm	TT3X Nm	TT4X Nm
Garden Green	-	-	-	2.03	-	-
Grey	-	-	2.03	2.71	-	-
Slicker Yellow	-	-	2.71	-	-	-
Purple	-	-	3.16	4.07	-	-
Copper	-	0.45	-	4.52	-	-
Light Blue	0.34	0.90	4.52	5.65	-	-
Gold	0.56	-	5.65	6.78	-	-
Red	0.90	1.36	6.78	9.04	-	-
Brown	1.13	2.03	10.17	11.30	33.89	84.74
Silver/Aluminium	1.36	2.82	11.30	13.56	45.19	112.98
Black	1.69	3.39	13.56	16.95	56.49	141.23
Almond	2.26	4.52	15.25	20.34	73.44	169.47
Orange	2.82	5.65	16.95	24.86	84.74	197.72
Medium Green	3.39	6.78	20.34	28.25	96.03	225.96
Yellow	4.52	9.60	22.60	33.89	112.98	254.21
Blue	5.65	11.30	28.25	39.54	129.93	282.45
No Colour	6.78	14.12	33.89	47.45	146.87	310.70
White	-	15.82	39.54	56.49	169.47	338.94

# ////// ZERO-MAX

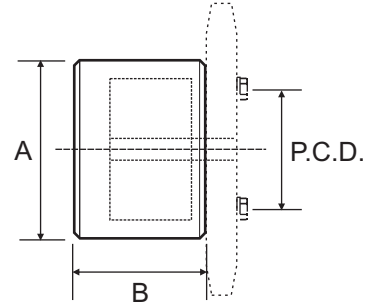
## TORQUE TENDER

### DIMENSIONAL DATA

#### STANDARD



#### JF TYPE SPROCKET NOT INCLUDED

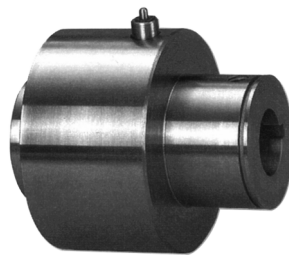


Part No.	Bore		A	B	C	C1	D1	D2
	Min	Max						
TT1X	6.4	12.7	39.7	45.7	29.0	15.2	22.2	25.4
TT2	9.5	15.9	55.0	61.5	39.1	19.1	31.7	34.9
TT2X	12.7	19.1	63.5	75.0	45.8	25.4	38.1	41.3
TT3	15.9	28.6	76.2	88.1	53.3	30.1	44.4	44.4
TT3X	22.2	38.1	92.1	115.6	78.2	31.7	57.1	63.5
TT4X	25.4	44.5	117.5	137.5	94.4	33.8	76.2	76.2

Part No.	Bore		A	B	P.C.D. 4 Bolts
	Min	Max			
TT1XJF	6.4	12.7	39.7	38.1	31.7
TT2JF	9.5	15.9	55.0	47.6	44.4
TT2XJF	12.7	19.1	63.5	57.1	50.8
TT3JF	15.9	28.6	76.2	66.7	60.3
TT3XJF	22.2	38.1	92.1	90.2	76.2
TT4XJF	25.4	44.5	117.5	111.1	101.6



**STANDARD UNIT  
WITH ACTUATING DISC**



**STANDARD UNIT  
WITH ACTUATING PIN**



**JF TYPE UNIT  
SPROCKET NOT INCLUDED**