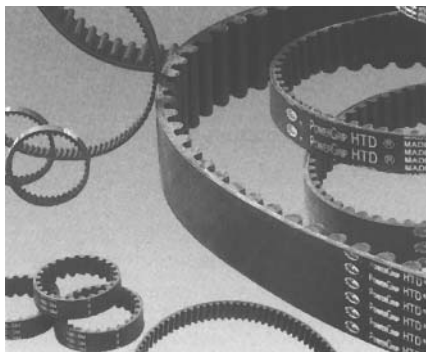
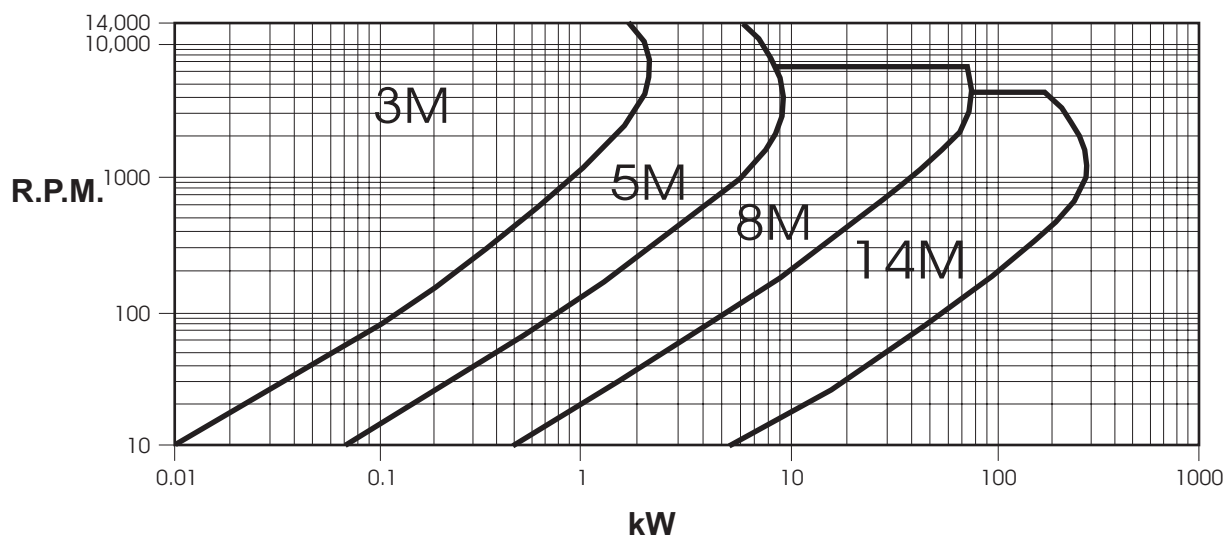


HTD Pulley & Belt Drives



HTD timing belts offer optimised load distribution through the rounded tooth form, guaranteeing high power transmission in low speed and high torque applications. Capable of transmitting up to 300kW and speeds of 14,000 rpm. HTD timing belts can be used in a wide range of applications from minimum drives like electronic power tools to heavy duty machinery where durability and low maintenance is required. To select a drive it is necessary to know the driver and driven shaft speeds, the demand power, proposed centre distance and duty cycle. The chart below can be used to select the optimum belt size for a drive. For further information or help in selecting a drive contact Naismith Engineering.



Identifying a Pulley

To identify a HTD timing pulley the following information must be known:

BORE - Naismith Engineering carries full stocks of pilot and taper bore pulleys. For HTD pulleys, the taper bore pulleys have a prefix P.

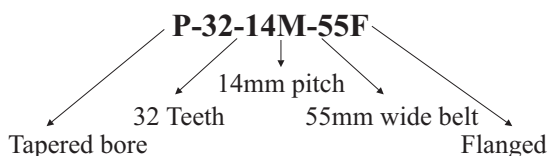
PITCH - This is the distance from the centre of one tooth to the centre of the next tooth. Naismith Engineering stocks 4 pitch sizes of HTD timing pulley:

3M	Pitch	3mm
5M		5mm
8M		8mm
14M		14mm

TEETH - Number of teeth.

WIDTH - The tooth width allows for a clearance of 3mm to 6mm on the belt. The tooth width code is the belt size width measured in mm. So for a belt width of 50mm, the width code becomes 50. Refer to Page 17 & 18 for a listing of all sizes.

FLANGES - Pulleys with a small number of teeth are fitted with flanges. The part number for flanged pulleys ends with 'F'. Refer to the pulley tables for more details.



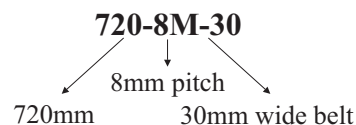
Identifying a belt

To identify a HTD timing belt the following information must be known:

LENGTH - A belt pitch length is determined by the number of teeth multiplied by the pitch. – refer page 17 & 18. The length code for a belt is the pitch length in mm. So a 8M section (8mm pitch) belt with 90 teeth has a pitch length of 720mm and a code of 720-8M.

PITCH - This is the distance from the centre of one tooth to the centre of the next tooth. Naismith Engineering stocks 4 pitch sizes of HTD timing belts.

WIDTH - The belt width measured in mm and gives the width code. So a belt width of 30mm, has a width code of 30. Refer to Page 17 & 18 for a listing of all sizes.



HTD Timing Belts 3M & 5M



	Pitch (mm)	T	B
3M	3mm	1.10	2.40
5M	5mm	2.10	3.80

Code & Pitch	Number of Teeth	Pitch Length mm
150-3M	50	150.0
156-3M	52	156.0
159-3M	53	159.0
210-3M	70	210.0
225-3M	75	225.0
255-3M	85	255.0
285-3M	95	285.0
288-3M	96	288.0
291-3M	97	291.0
300-3M	100	300.0
306-3M	102	306.0
312-3M	104	312.0
330-3M	110	330.0
345-3M	115	345.0
357-3M	119	357.0
384-3M	128	384.0
420-3M	140	420.0
447-3M	149	447.0
513-3M	171	513.0
531-3M	177	531.0
564-3M	188	564.0
633-3M	211	633.0
669-3M	223	669.0
711-3M	237	711.0
804-3M	268	804.0
1500-3M	500	1500.0

Standard widths of:-
 9mm Code = Length-3M-09
 15mm Code = Length-3M-15
 Long Length up to 15mm wide is available.

Code & Pitch	Number of Teeth	Pitch Length mm
120-5M	24	120.0
180-5M	36	180.0
225-5M	45	225.0
255-5M	51	255.0
265-5M	53	265.0
270-5M	54	270.0
280-5M	56	280.0
295-5M	59	295.0
300-5M	60	300.0
305-5M	61	305.0
325-5M	65	325.0
330-5M	66	330.0
340-5M	68	340.0
345-5M	69	345.0
350-5M	70	350.0
360-5M	72	360.0
370-5M	74	370.0
375-5M	75	375.0
400-5M	80	400.0
425-5M	85	425.0
450-5M	90	450.0
475-5M	95	475.0
500-5M	100	500.0
520-5M	104	520.0
525-5M	105	525.0
535-5M	107	535.0

Code & Pitch	Number of Teeth	Pitch Length mm
560-5M	112	560.0
575-5M	115	575.0
580-5M	116	580.0
600-5M	120	600.0
610-5M	122	610.0
615-5M	123	615.0
635-5M	127	635.0
640-5M	128	640.0
645-5M	129	645.0
670-5M	134	670.0
700-5M	140	700.0
750-5M	150	750.0
800-5M	160	800.0
825-5M	165	825.0
835-5M	167	835.0
860-5M	172	860.0
890-5M	178	890.0
900-5M	180	900.0
935-5M	187	935.0
950-5M	190	950.0
980-5M	196	980.0
1035-5M	207	1035.0
1100-5M	220	1100.0

Standard widths of:-
 9mm Code = Length-5M-09
 15mm Code = Length-5M-15
 25mm Code = Length-5M-25
 Long Length up to 25mm wide is available.

HTD Timing Belts 8M & 14M



	Pitch (mm)	T	B
8M	8mm	3.40	6.00
14M	14mm	6.00	10.00

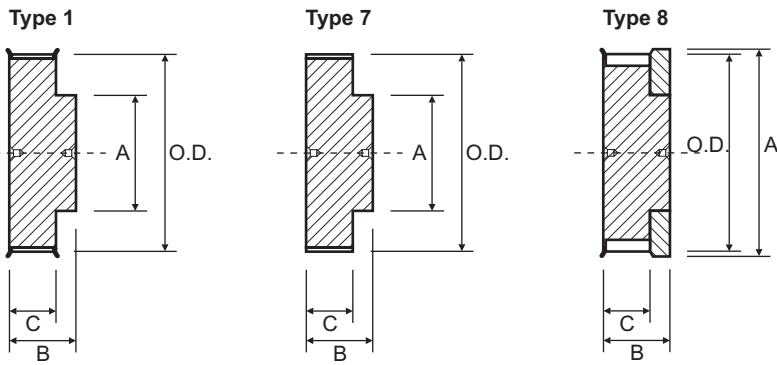
Code & Pitch	Number of Teeth	Pitch Length mm
480-8M	60	480.0
560-8M	70	560.0
600-8M	75	600.0
640-8M	80	640.0
720-8M	90	720.0
800-8M	100	800.0
880-8M	110	880.0
960-8M	120	960.0
1040-8M	130	1040.0
1120-8M	140	1120.0
1200-8M	150	1200.0
1280-8M	160	1280.0
1440-8M	180	1440.0
1600-8M	200	1600.0
1760-8M	220	1760.0
1800-8M	225	1800.0
2000-8M	250	2000.0
2400-8M	300	2400.0
2600-8M	325	2600.0
2800-8M	350	2800.0

Standard widths of:-
 20mm Code = Length-8M-20
 30mm Code = Length-8M-30
 55mm Code = Length-8M-50
 85mm Code = Length-8M-85
 Off standard widths are available on request.
 Long Length up to 85mm wide is available.

Code & Pitch	Number of Teeth	Pitch Length mm
966-14M	69	966.0
1190-14M	85	1190.0
1400-14M	100	1400.0
1610-14M	115	1610.0
1778-14M	127	1778.0
1890-14M	135	1890.0
2100-14M	150	2100.0
2310-14M	165	2310.0
2450-14M	175	2450.0
2590-14M	185	2590.0
2800-14M	200	2800.0
3150-14M	225	3150.0
3500-14M	250	3500.0
3850-14M	275	3850.0
4326-14M	309	4326.0
4578-14M	327	4578.0

Standard widths of:-
 40mm Code = Length-14M-40
 55mm Code = Length-14M-55
 85mm Code = Length-14M-85
 115mm Code = Length-14M-115
 170mm Code = Length-14M-170
 Off standard widths are available on request.
 Long Length up to 85mm wide is available.

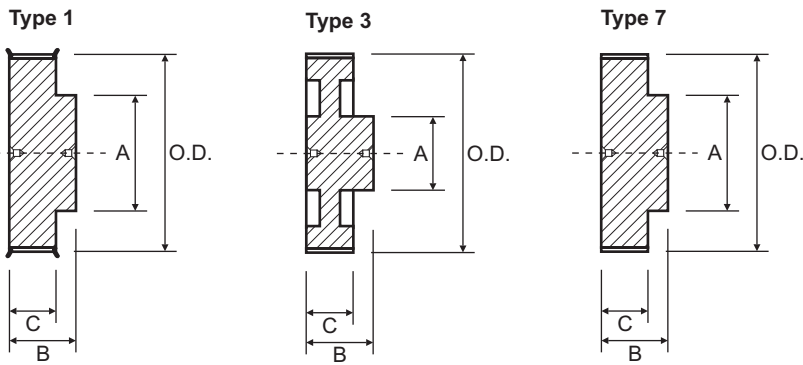
3M HTD Timing Pulleys



3M-9						3M-15					
Suit 9mm wide belt						Suit 15mm wide belt					
Part No.	O.D.	Type	A	B	C	Part No.	O.D.	Type	A	B	C
10-3M-9F	8.8	8	12.0	17.5	10.2	10-3M-15F	8.8	8	12.0	26.0	17.0
12-3M-9F	10.7	8	15.0	17.5	10.2	12-3M-15F	10.7	8	15.0	26.0	17.0
14-3M-9F	12.6	8	18.0	17.5	10.2	14-3M-15F	12.6	8	18.0	26.0	17.0
15-3M-9F	13.6	8	18.0	17.5	10.2	15-3M-15F	13.6	8	18.0	26.0	17.0
16-3M-9F	14.5	1	10.0	20.6	12.8	16-3M-15F	14.5	1	10.0	26.0	19.5
18-3M-9F	16.4	1	11.0	20.6	12.8	18-3M-15F	16.4	1	11.0	26.0	19.5
20-3M-9F	18.3	1	13.0	20.6	12.8	20-3M-15F	18.3	1	13.0	26.0	19.5
21-3M-9F	19.3	1	14.0	20.6	12.8	21-3M-15F	19.3	1	14.0	26.0	19.5
22-3M-9F	20.1	1	14.0	20.6	12.8	22-3M-15F	20.1	1	14.0	26.0	19.5
24-3M-9F	22.2	1	14.0	20.6	12.8	24-3M-15F	22.2	1	14.0	26.0	19.5
26-3M-9F	24.1	1	16.0	20.6	12.8	26-3M-15F	24.1	1	16.0	26.0	19.5
28-3M-9F	26.0	1	18.0	20.6	12.8	28-3M-15F	26.0	1	18.0	26.0	19.5
30-3M-9F	27.9	1	20.0	20.6	12.8	30-3M-15F	27.9	1	20.0	26.0	19.5
32-3M-9F	29.8	1	22.0	20.6	12.8	32-3M-15F	29.8	1	22.0	26.0	19.5
36-3M-9F	33.6	1	26.0	22.2	13.4	36-3M-15F	33.6	1	26.0	30.0	20.0
40-3M-9F	37.4	1	28.0	22.2	13.4	40-3M-15F	37.4	1	28.0	30.0	20.0
44-3M-9F	41.3	1	33.0	22.2	13.4	44-3M-15F	41.3	1	33.0	30.0	20.0
48-3M-9	45.1	7	33.0	22.2	13.4	48-3M-15	45.1	7	33.0	30.0	20.0
60-3M-9	56.5	7	33.0	22.2	13.4	60-3M-15	56.5	7	33.0	30.0	20.0
72-3M-9	68.0	7	33.0	22.2	13.4	72-3M-15	68.0	7	33.0	30.0	20.0

N.F. - No Flanges

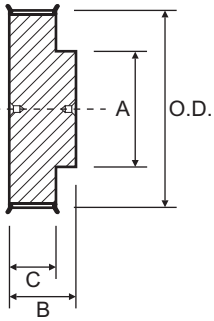
5M HTD Timing Pulleys



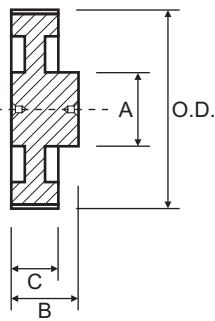
5M-9						5M-15					
Suit 9mm wide belt						Suit 15mm wide belt					
Part No.	O.D.	Type	A	B	C = 14.5	Part No.	O.D.	Type	A	B	C = 20.0
12-5M-9F	18.0	1	13.0	20.0	Steel Flanged	12-5M-15F	18.0	1	13.0	26.0	Steel Flanged
14-5M-9F	21.1	1	14.0	20.0		14-5M-15F	21.1	1	14.0	26.0	
15-5M-9F	22.7	1	16.0	20.0		15-5M-15F	22.7	1	16.0	26.0	
16-5M-9F	24.3	1	16.5	20.0		16-5M-15F	24.3	1	16.5	26.0	
18-5M-9F	27.5	1	20.0	20.0		18-5M-15F	27.5	1	20.0	26.0	
20-5M-9F	30.7	1	23.0	22.5		20-5M-15F	30.7	1	23.0	26.0	
21-5M-9F	32.3	1	24.0	22.5		21-5M-15F	32.3	1	24.0	26.0	
22-5M-9F	33.9	1	25.0	22.5		22-5M-15F	33.9	1	25.5	26.0	
24-5M-9F	37.1	1	27.0	22.5		24-5M-15F	37.1	1	27.0	28.0	
26-5M-9F	40.2	1	30.0	22.5		26-5M-15F	40.2	1	30.0	28.0	
28-5M-9F	43.4	1	30.5	22.5		28-5M-15F	43.4	1	30.5	28.0	
30-5M-9F	46.6	1	35.0	22.5		30-5M-15F	46.6	1	35.0	28.0	
32-5M-9F	49.8	1	38.0	22.5		32-5M-15F	49.8	1	38.0	28.0	
36-5M-9F	56.2	1	38.0	22.5		36-5M-15F	56.2	1	38.0	28.0	
40-5M-9F	62.5	1	38.0	22.5	40-5M-15F	62.5	1	38.0	28.0		
44-5M-9	68.9	7	38.0	25.5	Aluminium No Flanges	44-5M-15	68.9	7	38.0	30.0	Aluminium No Flanges
48-5M-9	75.3	7	45.0	25.5		48-5M-15	75.3	7	38.0	30.0	
60-5M-9	94.4	7	45.0	25.5		60-5M-15	94.4	7	50.0	30.0	
72-5M-9	113.5	3	45.0	25.5		72-5M-15	113.5	3	50.0	30.0	

5M HTD Timing Pulleys

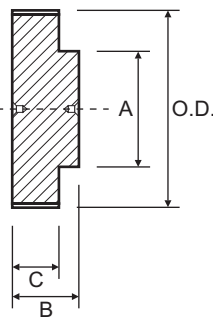
Type 1



Type 3



Type 7



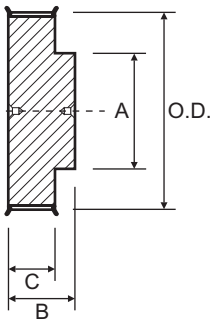
5M-25

Suit 25mm wide belt

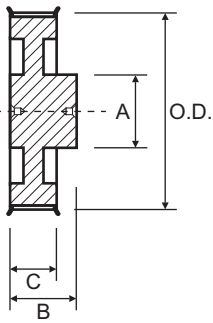
Part No.	O.D.	Type	A	B	C = 30.0		
12-5M-25F	18.0	1	13.0	36.0		Steel	Flanged
14-5M-25F	21.1	1	14.0	36.0			
15-5M-25F	22.7	1	16.0	36.0			
16-5M-25F	24.3	1	16.5	36.0			
18-5M-25F	27.5	1	20.0	36.0			
20-5M-25F	30.7	1	23.0	36.0			
21-5M-25F	32.3	1	24.0	38.0			
22-5M-25F	33.9	1	25.5	38.0			
24-5M-25F	37.1	1	27.0	38.0			
26-5M-25F	40.2	1	30.0	38.0			
28-5M-25F	43.4	1	30.5	38.0			
30-5M-25F	46.6	1	35.0	38.0			
32-5M-25F	49.8	1	38.0	38.0			
36-5M-25F	56.2	1	38.0	38.0			
40-5M-25F	62.5	1	38.0	38.0			
44-5M-25	68.9	7	38.0	40.0		Aluminium	No Flanges
48-5M-25	75.3	7	38.0	40.0			
60-5M-25	94.4	7	50.0	40.0			
72-5M-25	113.5	3	50.0	40.0			

8M HTD Timing Pulleys

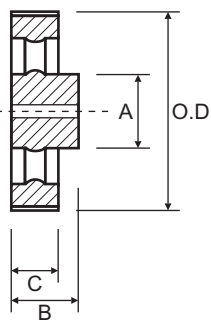
Type 1



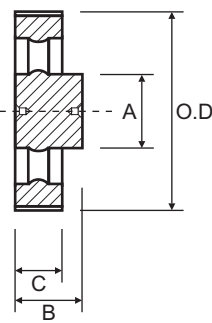
Type 2



Type 5



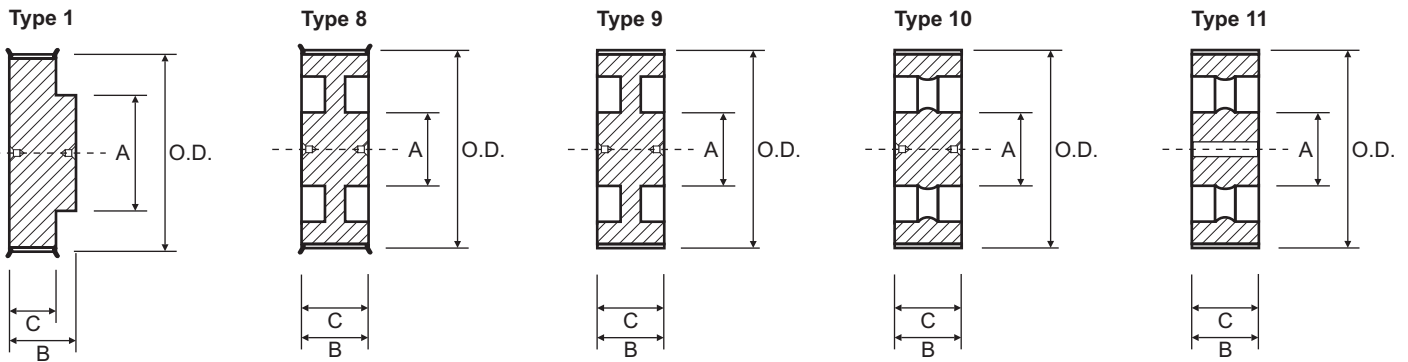
Type 6



8M-20					8M-30						
Suit 20mm wide belt					Suit 30mm wide belt						
Part No.	O.D.	Type	A	B	C = 28.0	Part No.	O.D.	Type	A	B	C = 38.0
18-8M-20F	44.5	1	32.0	38.0	Steel Flanged	18-8M-30F	44.5	1	32.0	48.0	Steel Flanged
20-8M-20F	49.6	1	36.0	38.0		20-8M-30F	49.6	1	36.0	48.0	
22-8M-20F	54.7	1	43.0	38.0		22-8M-30F	54.7	1	43.0	48.0	
24-8M-20F	59.7	1	49.0	38.0		24-8M-30F	59.7	1	49.0	48.0	
26-8M-20F	64.8	1	50.0	38.0		26-8M-30F	64.8	1	50.0	48.0	
28-8M-20F	69.9	1	55.0	38.0		28-8M-30F	69.9	1	55.0	48.0	
30-8M-20F	75.0	1	60.0	38.0		30-8M-30F	75.0	1	60.0	48.0	
32-8M-20F	80.1	1	64.0	38.0		32-8M-30F	80.1	1	64.0	48.0	
34-8M-20F	85.2	1	70.0	38.0		34-8M-30F	85.2	1	70.0	48.0	
36-8M-20F	90.3	1	75.0	38.0		36-8M-30F	90.3	1	75.0	48.0	
38-8M-20F	95.4	1	80.0	38.0		38-8M-30F	95.4	1	80.0	48.0	
40-8M-20F	100.5	1	85.0	38.0		40-8M-30F	100.5	1	85.0	48.0	
44-8M-20F	110.7	1	96.0	38.0		44-8M-30F	110.7	1	96.0	48.0	
48-8M-20F	120.9	1	104.0	38.0		48-8M-30F	120.9	1	104.0	48.0	
56-8M-20F	141.2	2	80.0	38.0	Cast Iron N.F.	56-8M-30F	141.2	2	90.0	48.0	Cast Iron N.F.
64-8M-20F	161.6	2	80.0	38.0		64-8M-30F	161.6	2	90.0	48.0	
72-8M-20F	182.0	2	80.0	38.0		72-8M-30F	182.0	2	95.0	48.0	
80-8M-20	202.4	6	90.0	38.0		80-8M-30	202.4	6	100.0	48.0	
90-8M-20	227.8	6	90.0	38.0		90-8M-30	227.8	6	100.0	48.0	
						112-8M-30	283.8	5	100.0	48.0	
						144-8M-30	365.3	5	100.0	48.0	

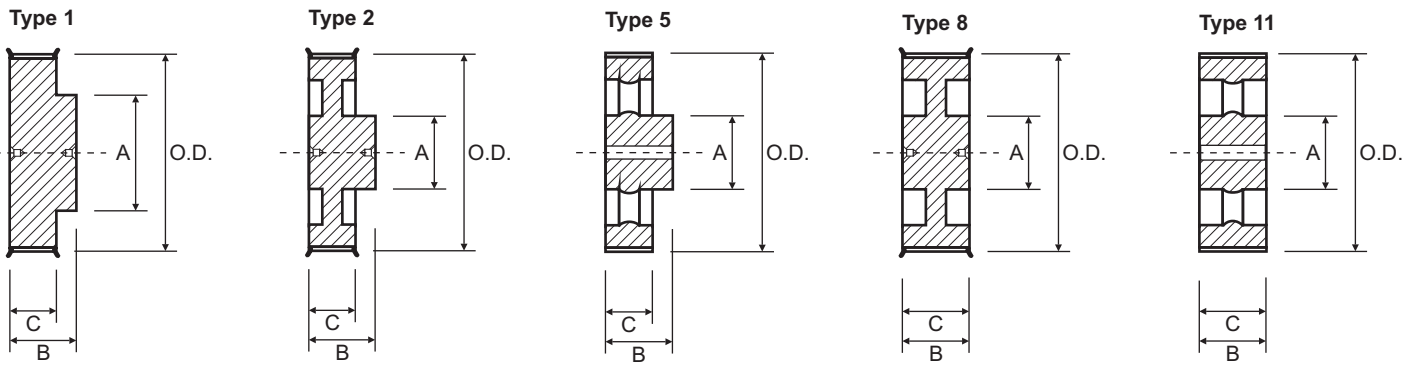
N.F. - No Flanges

8M HTD Timing Pulleys



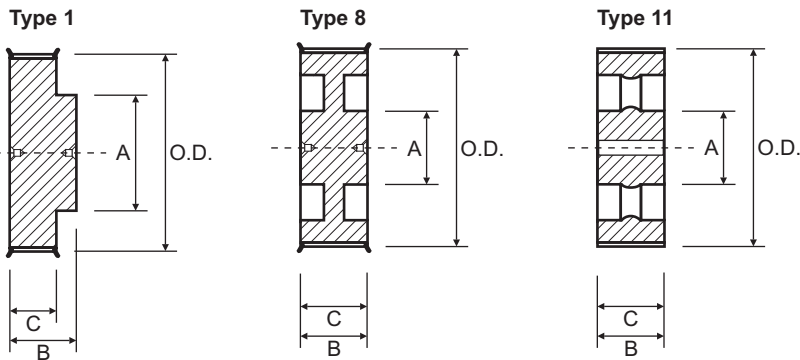
8M-50						8M-85					
Suit 50mm wide belt						Suit 85mm wide belt					
Part No.	O.D.	Type	A	B	C = 60.0	Part No.	O.D.	Type	A	B	C = 95.0
18-8M-50F	44.5	1	32.0	70.0	Steel Flanged	22-8M-85F	54.7	1	43.0	105.0	Steel Flanged
20-8M-50F	49.6	1	36.0	70.0		24-8M-85F	59.7	1	49.0	105.0	
22-8M-50F	54.7	1	43.0	70.0		26-8M-85F	64.8	1	50.0	105.0	
24-8M-50F	59.7	1	49.0	70.0		28-8M-85F	69.9	1	55.0	105.0	
26-8M-50F	64.8	1	50.0	70.0		30-8M-85F	75.0	1	60.0	105.0	
28-8M-50F	69.9	1	55.0	70.0		32-8M-85F	80.1	1	64.0	105.0	
30-8M-50F	75.0	1	60.0	70.0		34-8M-85F	85.2	1	70.0	105.0	
32-8M-50F	80.1	1	64.0	70.0		36-8M-85F	90.3	1	75.0	105.0	
34-8M-50F	85.2	1	70.0	70.0		38-8M-85F	95.4	1	80.0	105.0	
36-8M-50F	90.3	1	75.0	70.0		40-8M-85F	100.5	1	85.0	105.0	
38-8M-50F	95.4	1	80.0	70.0		44-8M-85F	110.7	1	96.0	105.0	
40-8M-50F	100.5	1	85.0	70.0		48-8M-85F	120.9	1	104.0	105.0	
44-8M-50F	110.7	1	96.0	70.0		56-8M-85F	141.2	1	107.0	105.0	
48-8M-50F	120.9	1	104.0	70.0		64-8M-85F	161.6	8	100.0	95.0	
56-8M-50F	141.2	8	90.0	60.0	72-8M-85F	182.0	8	110.0	95.0		
64-8M-50F	161.6	8	100.0	60.0	80-8M-85	202.4	9	110.0	95.0		
72-8M-50F	182.0	8	100.0	60.0	90-8M-85	227.8	10	110.0	95.0		
80-8M-50	202.4	9	110.0	60.0	112-8M-85	283.8	11	110.0	95.0		
90-8M-50	227.8	10	110.0	60.0	144-8M-85	365.3	11	120.0	95.0		
112-8M-50	283.8	11	110.0	60.0	168-8M-85	426.4	11	120.0	95.0		
144-8M-50	365.3	11	110.0	60.0	192-8M-85	487.5	11	130.0	95.0		
168-8M-50	426.4	11	120.0	60.0						Cast Iron No Flanges	
192-8M-50	487.5	11	130.0	60.0							

14M HTD Timing Pulleys



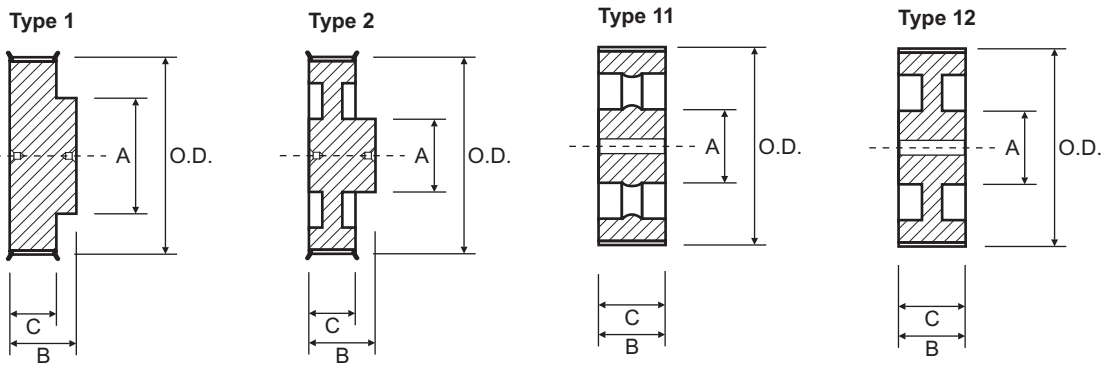
14M-40					14M-55						
Suit 40mm wide belt					Suit 55mm wide belt						
Part No.	O.D.	Type	A	B	C = 54.0	Part No.	O.D.	Type	A	B	C = 70.0
28-14M-40F	122.1	1	100.0	69.0	Cast Iron	28-14M-55F	122.1	1	100.0	85.0	Cast Iron
29-14M-40F	126.6	1	107.0	69.0		29-14M-55F	126.6	1	107.0	85.0	
30-14M-40F	131.0	1	107.0	69.0		30-14M-55F	131.0	1	107.0	85.0	
32-14M-40F	139.9	1	114.0	69.0		32-14M-55F	139.9	1	114.0	85.0	
34-14M-40F	148.8	1	122.0	69.0		34-14M-55F	148.8	1	122.0	85.0	
36-14M-40F	157.7	1	128.0	69.0		36-14M-55F	157.7	1	128.0	85.0	
38-14M-40F	166.6	1	141.0	69.0		38-14M-55F	166.6	1	141.0	85.0	
40-14M-40F	175.5	1	148.0	69.0		40-14M-55F	175.5	1	148.0	85.0	
44-14M-40F	193.3	2	120.0	69.0		44-14M-55F	193.3	2	120.0	85.0	
48-14M-40F	211.1	2	135.0	69.0		48-14M-55F	211.1	8	135.0	70.0	
56-14M-40F	246.8	2	135.0	69.0		56-14M-55F	246.8	8	135.0	70.0	
64-14M-40F	282.4	2	135.0	69.0		64-14M-55F	282.4	8	135.0	70.0	
72-14M-40	318.1	5	135.0	69.0		72-14M-55	318.1	11	135.0	70.0	
80-14M-40	353.7	5	135.0	69.0		80-14M-55	353.7	11	135.0	70.0	
90-14M-40	398.3	5	135.0	69.0	90-14M-55	398.3	11	135.0	70.0		
112-14M-40	496.3	5	135.0	69.0	112-14M-55	496.3	11	135.0	70.0		
144-14M-40	638.9	5	135.0	69.0	144-14M-55	638.9	11	135.0	70.0		

14M HTD Timing Pulleys



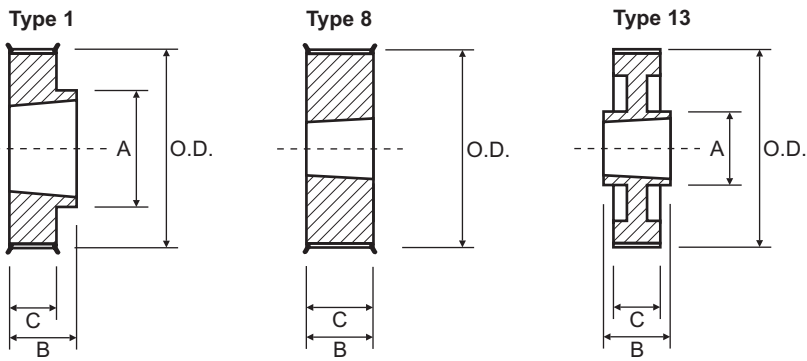
14M-85						14M-115					
Suit 85mm wide belt						Suit 115mm wide belt					
Part No.	O.D.	Type	A	B	C=102.0	Part No.	O.D.	Type	A	B	C=133.0
28-14M-85F	122.1	1	100.0	117.0	Cast Iron	28-14M-115F	122.1	1	100.0	148.0	Cast Iron
29-14M-85F	126.6	1	107.0	117.0		29-14M-115F	126.6	1	107.0	148.0	
30-14M-85F	131.0	1	107.0	117.0		30-14M-115F	131.0	1	107.0	148.0	
32-14M-85F	139.9	1	114.0	117.0		32-14M-115F	139.9	1	114.0	148.0	
34-14M-85F	148.8	1	122.0	117.0		34-14M-115F	148.8	1	122.0	148.0	
36-14M-85F	157.7	1	128.0	117.0		36-14M-115F	157.7	1	128.0	148.0	
38-14M-85F	166.6	1	141.0	117.0		38-14M-115F	166.6	1	141.0	148.0	
40-14M-85F	175.5	1	148.0	117.0		40-14M-115F	175.5	1	148.0	148.0	
44-14M-85F	193.3	1	169.0	117.0		44-14M-115F	193.3	1	169.0	148.0	
48-14M-85F	211.1	1	186.0	117.0		48-14M-115F	211.1	1	186.0	148.0	
56-14M-85F	246.8	8	150.0	102.0		56-14M-115F	246.8	8	150.0	133.0	
64-14M-85F	282.4	8	150.0	102.0		64-14M-115F	282.4	8	150.0	133.0	
72-14M-85	318.1	11	150.0	102.0		72-14M-115	318.1	11	150.0	133.0	
80-14M-85	353.7	11	150.0	102.0		80-14M-115	353.7	11	150.0	133.0	
90-14M-85	398.3	11	150.0	102.0	90-14M-115	398.3	11	150.0	133.0		
112-14M-85	496.3	11	150.0	102.0	112-14M-115	496.3	11	150.0	133.0		
144-14M-85	638.9	11	150.0	102.0	144-14M-115	638.9	11	150.0	133.0		

14M HTD Timing Pulleys



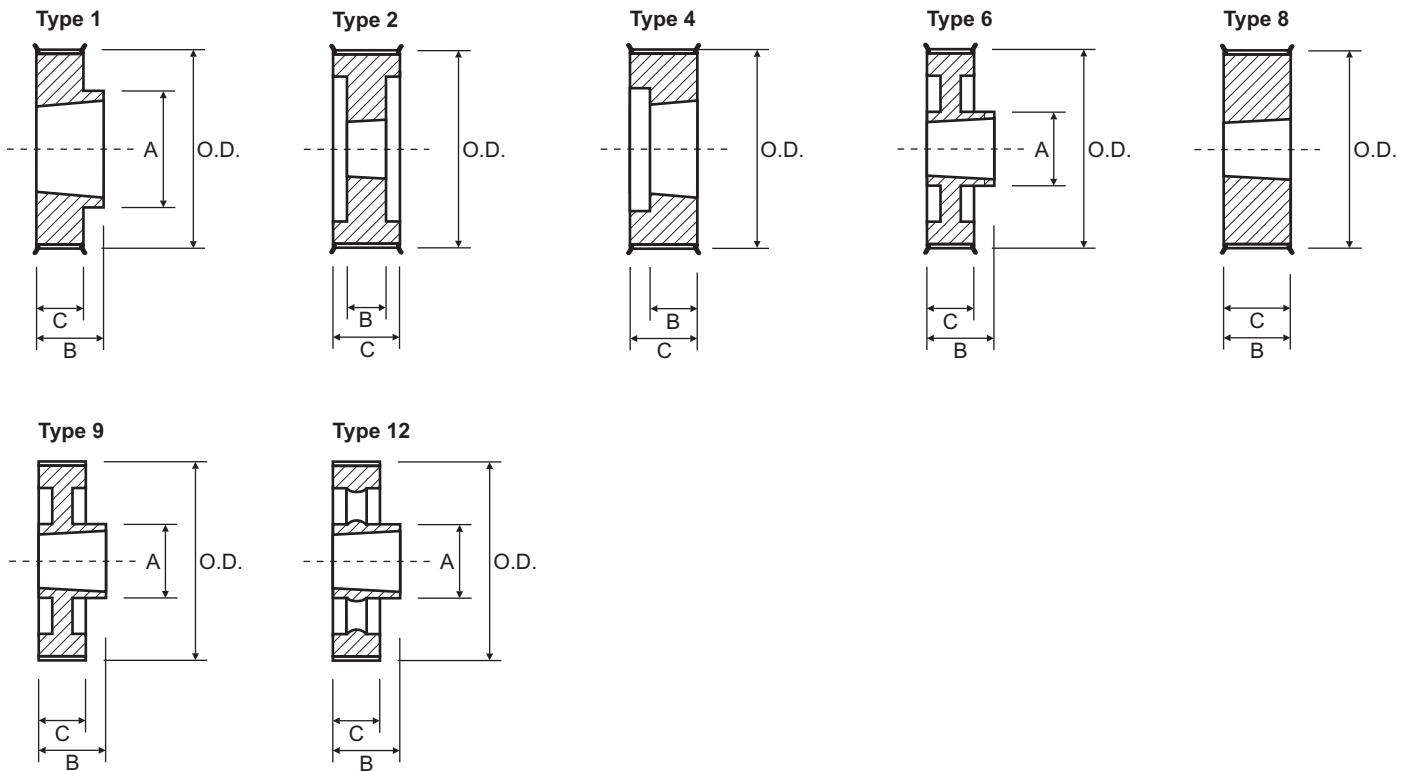
14M-170						
Suit 170mm wide belt						
Part No.	O.D.	Type	A	B	C = 187.0	
28-14M-170F	122.1	1	100.0	202.0	Cast Iron	
29-14M-170F	126.6	1	107.0	202.0		
30-14M-170F	131.0	1	107.0	202.0		
32-14M-170F	139.9	1	114.0	202.0		
34-14M-170F	148.8	1	122.0	202.0		
36-14M-170F	157.7	1	128.0	202.0		
38-14M-170F	166.6	1	141.0	202.0		
40-14M-170F	175.5	1	148.0	202.0		
44-14M-170F	193.3	1	169.0	202.0		
48-14M-170F	211.1	1	186.0	202.0		
56-14M-170F	246.8	2	160.0	202.0		
64-14M-170F	282.4	2	180.0	202.0		
72-14M-170	318.1	12	180.0	187.0		No Flanges
80-14M-170	353.7	12	180.0	187.0		
90-14M-170	398.3	11	180.0	187.0		
112-14M-170	496.3	11	200.0	187.0		
144-14M-170	638.9	11	200.0	187.0		

5M HTD Timing Pulleys



5M-15						
Suit 15mm wide belt						
Part No.	O.D	Type	Bush	A	B	C = 22.0
P-34-5M-15F	53.0	8	1008	-	22.0	Steel Flanged
P-36-5M-15F	56.2	8	1108	-	22.0	
P-38-5M-15F	59.3	8	1108	-	22.0	
P-40-5M-15F	62.5	8	1108	-	22.0	
P-44-5M-15F	68.9	8	1108	-	22.0	
P-48-5M-15F	72.3	1	1210	64.0	25.0	
P-56-5M-15F	88.0	1	1210	70.0	25.0	Cast Iron No Flanges
P-64-5M-15F	100.7	1	1210	78.0	25.0	
P-72-5M-15F	113.5	1	1610	90.0	25.0	
P-80-5M-15F	126.2	1	1610	92.0	25.0	
P-90-5M-15	142.1	13	1610	92.0	25.0	
P112-5M-15	177.1	13	1610	92.0	25.0	
P136-5M-15	215.3	13	2012	110.0	32.0	
P150-5M-15	237.6	13	2012	110.0	32.0	

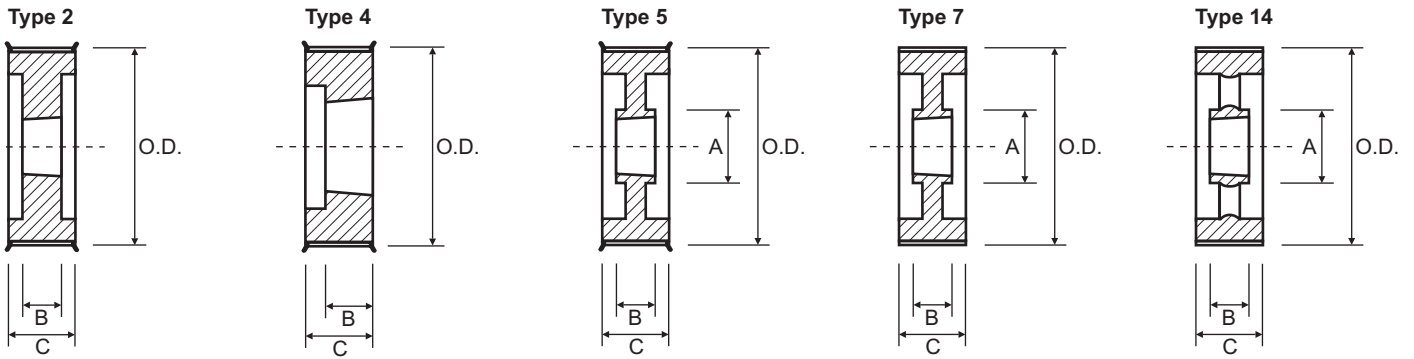
8M HTD Timing Pulleys



8M-20							8M-30						
Suit 20mm wide belt							Suit 30mm wide belt						
Part No.	O.D.	Type	Bush	A	B	C = 28.0	Part No.	O.D.	Type	Bush	A	B	C = 38.0
P-22-8M-20F	54.7	4	1008	-	22.0	Cast Iron	P-22-8M-30F	54.7	4	1008	-	22.0	Cast Iron
P-24-8M-20F	59.7	4	1108	-	22.0		P-24-8M-30F	59.7	4	1108	-	22.0	
P-26-8M-20F	64.8	4	1108	-	22.0		P-26-8M-30F	64.8	4	1108	-	22.0	
P-28-8M-20F	69.9	4	1108	-	22.0		P-28-8M-30F	69.9	4	1108	-	22.0	
P-30-8M-20F	75.0	4	1108	-	22.0		P-30-8M-30F	75.0	8	1615	-	38.0	
P-32-8M-20F	80.1	4	1610	-	25.0		P-32-8M-30F	80.1	8	1615	-	38.0	
P-34-8M-20F	85.2	4	1610	-	25.0		P-34-8M-30F	85.2	8	1615	-	38.0	
P-36-8M-20F	90.3	4	1610	-	25.0		P-36-8M-30F	90.3	8	1615	-	38.0	
P-38-8M-20F	95.4	4	1610	-	25.0		P-38-8M-30F	95.4	8	1615	-	38.0	
P-40-8M-20F	100.5	4	1610	-	25.0		P-40-8M-30F	100.5	8	1615	-	38.0	
P-44-8M-20F	110.7	1	2012	99.0	32.0		P-44-8M-30F	110.7	2	2012	-	32.0	
P-48-8M-20F	120.9	1	2012	105.0	32.0		P-48-8M-30F	120.9	2	2012	-	32.0	
P-56-8M-20F	141.2	1	2012	105.0	32.0		P-56-8M-30F	141.2	2	2012	-	32.0	
P-64-8M-20F	161.6	6	2012	110.0	32.0		P-64-8M-30F	161.6	1	2517	115.0	45.0	
P-72-8M-20F	182.0	6	2012	110.0	32.0		P-72-8M-30F	182.0	6	2517	120.0	45.0	
P-80-8M-20	202.4	9	2012	110.0	32.0		P-80-8M-30	202.4	9	2517	120.0	45.0	
P-90-8M-20	227.8	12	2012	110.0	32.0		P-90-8M-30	227.8	12	2517	120.0	45.0	
							N.F.	P112-8M-30	283.8	12	2517	120.0	
						P144-8M-30		365.3	12	2517	120.0	45.0	

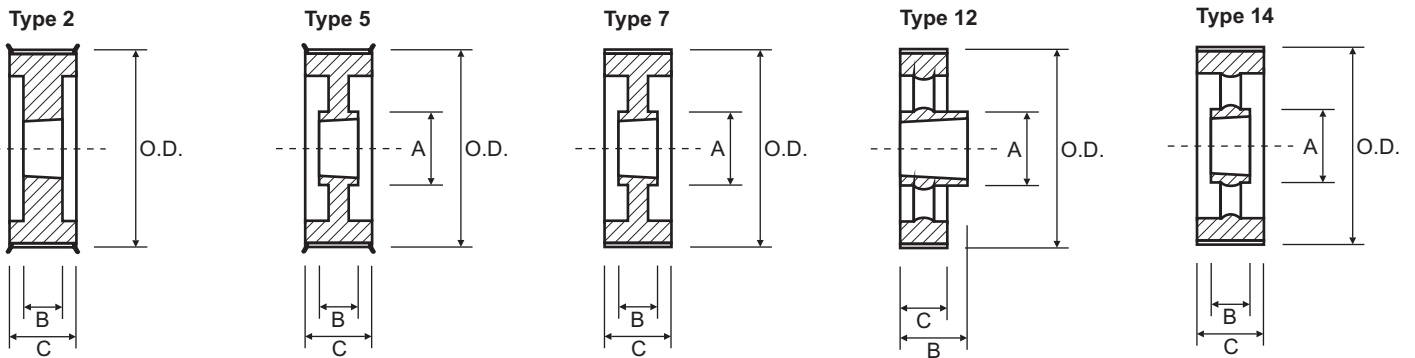
N.F. - No Flanges

8M HTD Timing Pulleys



8M-50						8M-85							
Suit 50mm wide belt						Suit 85mm wide belt							
Part No.	O.D	Type	Bush	A	B	C = 60.0	Part No.	O.D	Type	Bush	A	B	C = 95.0
P-28-8M-50F	69.9	2	1108	-	22.0	Cast Iron	P-34-8M-85F	85.2	2	1615	-	38.0	Cast Iron
P-30-8M-50F	75.0	4	1615	-	38.0		P-36-8M-85F	90.3	2	1615	-	38.0	
P-32-8M-50F	80.1	4	1615	-	38.0		P-38-8M-85F	95.4	2	1615	-	38.0	
P-34-8M-50F	85.2	4	1615	-	38.0		P-40-8M-85F	100.5	2	2012	-	32.0	
P-36-8M-50F	90.3	4	1615	-	38.0		P-44-8M-85F	110.7	2	2012	-	32.0	
P-38-8M-50F	95.4	4	1615	-	38.0		P-48-8M-85F	120.9	2	2517	-	45.0	
P-40-8M-50F	100.5	2	2012	-	32.0		P-56-8M-85F	141.2	2	2517	-	45.0	
P-44-8M-50F	110.7	2	2012	-	32.0		P-64-8M-85F	161.6	2	2517	-	45.0	
P-48-8M-50F	120.9	2	2012	-	32.0		P-72-8M-85F	182.0	2	3020	-	51.0	
P-56-8M-50F	141.2	2	2517	-	45.0		P-80-8M-85	202.4	7	3020	140.0	51.0	
P-64-8M-50F	161.6	5	2517	115.0	45.0		P-90-8M-85	227.8	7	3020	146.0	51.0	
P-72-8M-50F	182.0	5	2517	120.0	45.0		P112-8M-85	283.8	14	3020	146.0	51.0	
P-80-8M-50	202.4	7	3020	140.0	51.0		P144-8M-85	365.3	14	3030	140.0	76.0	
P-90-8M-50	227.8	7	3020	146.0	51.0		P168-8M-85	426.4	14	3030	140.0	76.0	
P112-8M-50	283.8	14	3020	146.0	51.0	P192-8M-85	487.5	14	3030	140.0	76.0		
P144-8M-50	365.3	14	3020	146.0	51.0								
P168-8M-50	426.4	14	3020	146.0	51.0								
P192-8M-50	487.5	14	3020	146.0	51.0								

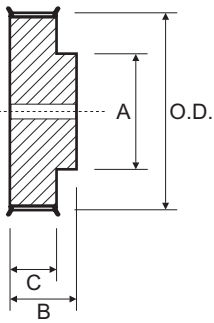
14M HTD Timing Pulleys



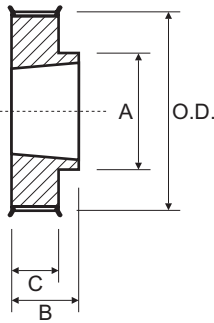
14M-40							14M-55						
Suit 40mm wide belt							Suit 55mm wide belt						
Part No.	O.D	Type	Bush	A	B	C = 54.0	Part No.	O.D	Type	Bush	A	B	C = 70.0
P-28-14M-40F	122.1	2	2012	-	32.0	Cast Iron	P-28-14M-55F	122.1	2	2012	-	32.0	Cast Iron
P-29-14M-40F	126.6	2	2012	-	32.0		P-29-14M-55F	126.6	2	2012	-	32.0	
P-30-14M-40F	131.0	2	2012	-	32.0		P-30-14M-55F	131.0	2	2517	-	45.0	
P-32-14M-40F	139.9	2	2012	-	32.0		P-32-14M-55F	139.9	2	2517	-	45.0	
P-34-14M-40F	148.8	2	2517	-	45.0		P-34-14M-55F	148.8	2	2517	-	45.0	
P-36-14M-40F	157.7	2	2517	-	45.0		P-36-14M-55F	157.7	2	2517	-	45.0	
P-38-14M-40F	166.6	2	2517	-	45.0		P-38-14M-55F	166.6	2	2517	-	45.0	
P-40-14M-40F	175.5	2	2517	-	45.0		P-40-14M-55F	175.5	2	2517	-	45.0	
P-44-14M-40F	193.3	2	3020	-	51.0		P-44-14M-55F	193.3	2	3020	-	51.0	
P-48-14M-40F	211.1	2	3020	-	51.0		P-48-14M-55F	211.1	2	3020	-	51.0	
P-56-14M-40F	246.8	5	3020	146.0	51.0		P-56-14M-55F	246.8	5	3020	146.0	51.0	
P-64-14M-40F	282.4	5	3020	146.0	51.0		P-64-14M-55F	282.4	5	3020	146.0	51.0	
P-72-14M-40	318.1	7	3020	146.0	51.0		P-72-14M-55	318.1	7	3020	146.0	51.0	
P-80-14M-40	353.7	14	3020	146.0	51.0		P-80-14M-55	353.7	14	3020	146.0	51.0	
P-90-14M-40	398.3	14	3020	146.0	51.0	P-90-14M-55	398.3	14	3020	146.0	51.0		
P112-14M-40	496.3	14	3020	146.0	51.0	P112-14M-55	496.3	14	3020	146.0	51.0		
P144-14M-40	638.9	14	3020	146.0	51.0	P144-14M-55	638.9	14	3020	146.0	51.0		
						No Flanges	P168-14M-55	745.9	14	3020	146.0	51.0	No Flanges
							P192-14M-55	852.8	12	3535	178.0	89.0	

8M Poly Chain GT Timing Pulleys

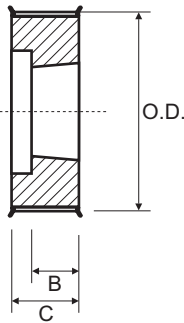
Type 1*



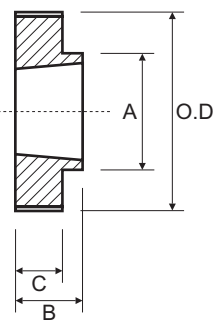
Type 1



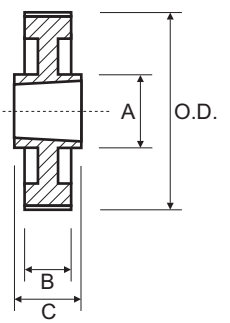
Type 4



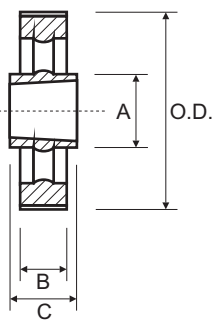
Type 6



Type 10



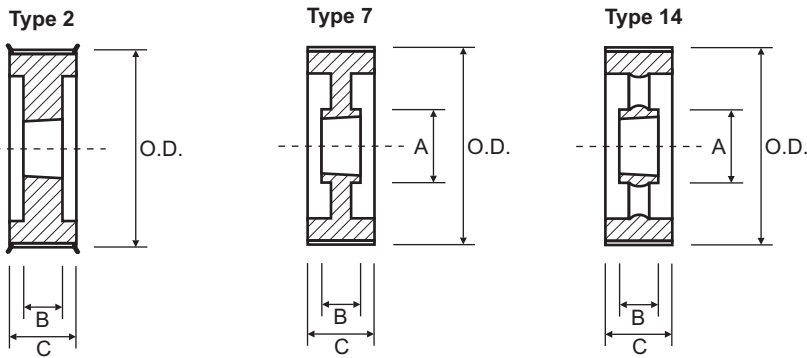
Type 11



8M-12							8M-21						
Suit 12mm wide belt							Suit 21mm wide belt						
Part No.	O.D.	Type	Bush	A	B	C = 20	Part No.	O.D.	Type	Bush	A	B	C = 30
8M-22S-12F	54.42	1*	P.B.	43	30	Contact Gates Australia for Material Specification	8M-22S-21F	54.42	1*	P.B.	43	42	Contact Gates Australia for Material Specification
8M-25S-12F	62.06	1	1108	49	22		8M-25S-21F	62.06	4	1108	-	22	
8M-28S-12F	69.70	1	1108	56	22		8M-28S-21F	69.70	4	1210	-	25	
8M-30S-12F	74.79	1	1210	60	25		8M-30S-21F	74.79	4	1210	-	25	
8M-32S-12F	79.89	1	1610	66	25		8M-32S-21F	79.89	4	1610	-	25	
8M-34S-12F	84.98	1	1610	69	25		8M-34S-21F	84.98	4	1610	-	25	
8M-36S-12F	90.07	1	1610	76	25		8M-36S-21F	90.07	4	1610	-	25	
8M-38S-12F	95.17	1	1610	78	25		8M-38S-21F	95.17	4	1610	-	25	
8M-40S-12F	100.26	1	1610	85	25		8M-40S-21F	100.26	4	1610	-	25	
8M-45S-12F	112.99	1	2012	92	32		8M-45S-21F	112.99	1	2012	92	32	
8M-48S-12F	120.63	1	2012	103	32		8M-48S-21F	120.63	1	2012	103	32	
8M-50S-12F	125.72	1	2012	104	32		8M-50S-21F	125.72	1	2012	104	32	
8M-56S-12F	141.00	1	2012	104	32		8M-56S-21F	141.00	1	2012	111	32	
8M-60S-12F	151.19	1	2012	111	32		8M-60S-21F	151.19	1	2517	124	45	
8M-64S-12F	161.37	1	2012	111	32		8M-64S-21F	161.37	1	2517	124	45	
8M-75S-12	189.39	6	2012	111	32		8M-75S-21	189.39	6	2517	124	45	
8M-80S-12	202.12	6	2012	111	32		8M-80S-21	202.12	6	2517	124	45	
8M-90S-12	227.58	6	2012	111	32		8M-90S-21	227.58	10	2517	124	45	
						N.F.	8M-112S-21	283.61	10	2517	124	45	
							8M-140S-21	354.91	11	3020	150	51	

N.F. = No Flanges

14M HTD Timing Pulleys



14M-170						
Suit 170mm wide belt						
Part No.	O.D.	Type	Bush	A	B	C = 187.0
P38-14M-170F	166.6	2	3030	-	76.0	Cast Iron Flanged
P40-14M-170F	175.5	2	3030	-	76.0	
P44-14M-170F	193.3	2	3535	-	89.0	
P48-14M-170F	211.1	2	3535	-	89.0	
P56-14M-170F	246.8	2	3535	-	89.0	
P64-14M-170F	282.4	2	4040	-	102.0	
P72-14M-170	318.1	7	4040	215.0	102.0	Cast Iron No Flanges
P80-14M-170	353.7	7	4040	215.0	102.0	
P90-14M-170	398.3	14	4040	215.0	102.0	
P112-14M-170	496.3	14	5050	267.0	127.0	
P144-14M-170	638.9	14	5050	267.0	127.0	
P168-14M-170	745.9	14	5050	267.0	127.0	
P192-14M-170	852.8	14	5050	267.0	127.0	
P216-14M-170	959.8	14	5050	267.0	127.0	