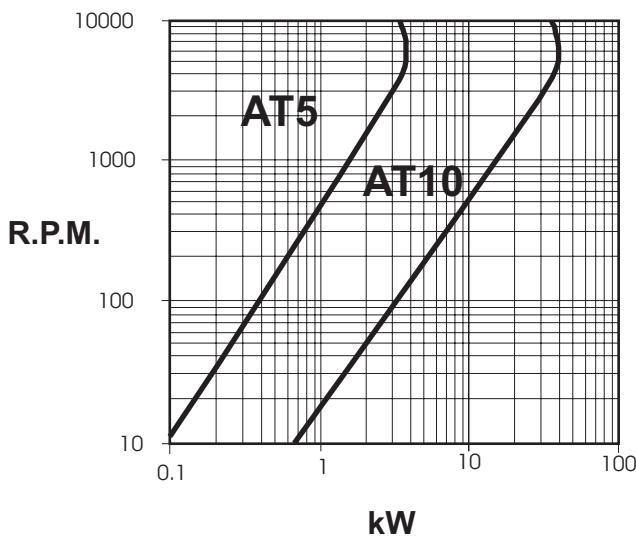


Metric T & AT Pulley & Belt Drives



The metric T & AT series was created to meet industries need for polyurethane belts with a high price/quality ratio. They provide maximum power transmission combined with perfect tooth meshing. Capable of transmitting up to 60kW and speeds of 10,000 rpm. To select a drive it is necessary to know the driver and driven shaft speeds, the demand power, proposed centre distance and duty cycle. The chart below can be used to select the optimum belt size for a drive. For further information or help in selecting a drive contact Naismith Engineering.



Identifying a Pulley

To identify a T & AT metric timing pulley the following information must be known:

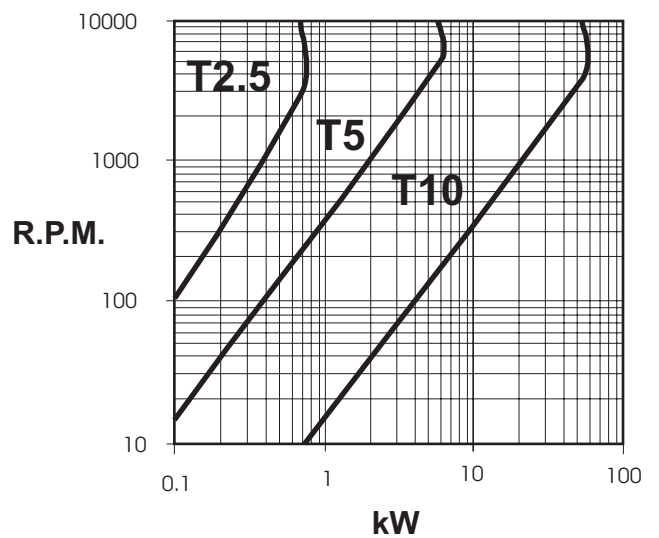
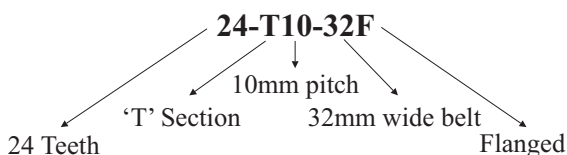
BORE - Naismith Engineering carries full stocks of pilot pulleys. As they are only available in aluminium taper bore is not recommended

PITCH - This is the distance from the centre of one tooth to the centre of the next tooth. Naismith Engineering stocks 3 pitch sizes of metric timing pulley:

T2.5	Pitch	2.5mm
AT5 & T5		5mm
AT10 & T10		10mm

TEETH - Number of teeth.

WIDTH - The tooth width allows for a clearance of 3mm to 6mm on the belt. The tooth width code is the belt size width measured in mm. So for a belt width of 50mm, the width code becomes 50. Refer to Page 40, 41, 42 & 48 for a listing of all sizes. **FLANGES** - Pulleys with a small number of teeth are fitted with flanges. The part number for flanged pulleys ends with 'F'. Refer to the pulley tables for more details.



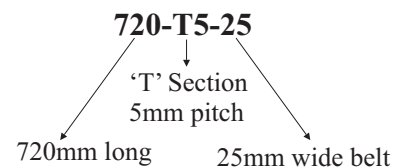
Identifying a belt

To identify a T & AT metric timing belt the following information must be known:

LENGTH - A belt pitch length is determined by the number of teeth multiplied by the pitch. – refer page 40, 41, 42 & 48. The length code for a belt is the pitch length in mm. So a T5 section (5mm pitch) belt with 49 teeth has a pitch length of 245mm and a code of 245-T5.

PITCH - This is the distance from the centre of one tooth to the centre of the next tooth. Naismith Engineering stocks 3 pitch sizes of metric timing belts.

WIDTH - The belt width measured in mm and gives the width code. So a belt width of 25mm, has a width code of 25. Refer to Page 40, 41, 42 & 48 for a listing of all sizes.



Metric Timing Belts T2.5 & T5



	Pitch (mm)	T	B
T2.5	2.50	0.70	1.30
T5	5.00	1.20	2.20

Code & Pitch	Number of Teeth	Pitch Length mm
120-T2.5	48	120.0
145-T2.5	58	145.0
160-T2.5	64	160.0
177.5-T2.5	71	177.5
182.5-T2.5	73	182.5
185-T2.5	74	185.0
200-T2.5	80	200.0
230-T2.5	92	230.0
245-T2.5	98	245.0
265-T2.5	106	265.0
285-T2.5	114	285.0
305-T2.5	122	305.0
317.5-T2.5	127	317.5
330-T2.5	132	330.0
380-T2.5	152	380.0
395-T2.5	158	395.0
420-T2.5	168	420.0
480-T2.5	192	480.0
500-T2.5	200	500.0
540-T2.5	216	540.0
600-T2.5	240	600.0
620-T2.5	248	620.0
650-T2.5	260	650.0
680-T2.5	272	680.0
700-T2.5	280	700.0
780-T2.5	312	780.0
880-T2.5	352	880.0
915-T2.5	366	915.0
950-T2.5	380	950.0
1185-T2.5	474	1185.0

Standard widths of:-
6mm Code = Length-T2.5-6
Off standard widths are available on request.

Code & Pitch	Number of Teeth	Pitch Length mm
150-T5	30	150.0
165-T5	33	165.0
180-T5	36	180.0
185-T5	37	185.0
200-T5	40	200.0
210-T5	42	210.0
215-T5	43	215.0
220-T5	44	220.0
225-T5	45	225.0
245-T5	49	245.0
250-T5	50	250.0
255-T5	51	255.0
260-T5	52	260.0
270-T5	54	270.0
275-T5	55	275.0
280-T5	56	280.0
295-T5	59	295.0
305-T5	61	305.0
315-T5	63	315.0
330-T5	66	330.0
340-T5	68	340.0
350-T5	70	350.0
355-T5	71	355.0
365-T5	73	365.0
390-T5	78	390.0
400-T5	80	400.0
410-T5	82	410.0
420-T5	84	420.0
445-T5	89	445.0
450-T5	90	450.0
455-T5	91	455.0
460-T5	92	460.0
475-T5	95	475.0
480-T5	96	480.0
500-T5	100	500.0
510-T5	102	510.0
525-T5	105	525.0
545-T5	109	545.0
550-T5	110	550.0
560-T5	112	560.0

Code & Pitch	Number of Teeth	Pitch Length mm
575-T5	115	575
590-T5	118	590
610-T5	122	610
620-T5	124	620
630-T5	126	630
640-T5	128	640
650-T5	130	650
660-T5	132	660
675-T5	135	675
690-T5	138	690
700-T5	140	700
720-T5	144	720
750-T5	150	750
765-T5	153	765
780-T5	156	780
815-T5	163	815
830-T5	166	830
840-T5	168	840
860-T5	172	860
885-T5	177	885
900-T5	180	900
940-T5	188	940
990-T5	198	990
1075-T5	215	1075
1100-T5	220	1100
1160-T5	232	1160
1200-T5	240	1200
1215-T5	243	1215
1275-T5	255	1275
1280-T5	256	1280
1315-T5	263	1315
1355-T5	271	1355
1380-T5	276	1380
1955-T5	391	1955

Standard widths of:-
10mm Code = Length-T5-10
16mm Code = Length-T5-16
25mm Code = Length-T5-25
Off standard widths are available on request.
Long Length up to 32mm wide is available.

Metric Timing Belts T10



	Pitch (mm)	T	B
T10	10.00	2.50	4.50

Code & Pitch	Number of Teeth	Pitch Length mm
260-T10	26	260.0
340-T10	34	340.0
370-T10	37	370.0
390-T10	39	390.0
400-T10	40	400.0
410-T10	41	410.0
440-T10	44	440.0
450-T10	45	450.0
480-T10	48	480.0
500-T10	50	500.0
530-T10	53	530.0
560-T10	56	560.0
600-T10	60	600.0
610-T10	61	610.0
630-T10	63	630.0
660-T10	66	660.0
680-T10	68	680.0
690-T10	69	690.0
700-T10	70	700.0
720-T10	72	720.0
730-T10	73	730.0
750-T10	75	750.0
780-T10	78	780.0
810-T10	81	810.0
840-T10	84	840.0
880-T10	88	880.0
890-T10	89	890.0
900-T10	90	900.0
910-T10	91	910.0
920-T10	92	920.0
960-T10	96	960.0
970-T10	97	970.0
980-T10	98	980.0

Code & Pitch	Number of Teeth	Pitch Length mm
1010-T10	101	1010.0
1080-T10	108	1080.0
1100-T10	110	1100.0
1110-T10	111	1110.0
1140-T10	114	1140.0
1150-T10	115	1150.0
1210-T10	121	1210.0
1240-T10	124	1240.0
1250-T10	125	1250.0
1300-T10	130	1300.0
1320-T10	132	1320.0
1350-T10	135	1350.0
1390-T10	139	1390.0
1400-T10	140	1400.0
1420-T10	142	1420.0
1450-T10	145	1450.0
1460-T10	146	1460.0
1500-T10	150	1500.0
1560-T10	156	1560.0
1610-T10	161	1610.0
1750-T10	175	1750.0
1780-T10	178	1780.0
1880-T10	188	1880.0
1960-T10	196	1960.0
2250-T10	225	2250.0

Standard widths of:-
 16mm Code = Length-T10-16
 25mm Code = Length-T10-25
 32mm Code = Length-T10-32
 50mm Code = Length-T10-50
 Off standard widths are available on request.
 Long Length up to 100mm wide is available.

Metric Double Sided Timing Belts T5 & T10



	Pitch (mm)	T	B
T5	5.00	1.20	3.30
T10	10.00	2.50	6.70

Code & Pitch	Number of Teeth	Pitch Length mm
260-T5DL	52	260.0
410-T5DL	82	410.0
460-T5DL	92	460.0
480-T5DL	96	480.0
515-T5DL	103	515.0
590-T5DL	118	590.0
620-T5DL	124	620.0
750-T5DL	150	750.0
815-T5DL	163	815.0
860-T5DL	172	860.0
940-T5DL	188	940.0
1100-T5DL	220	1100.0

Standard widths of:-

10mm Code = Length-T5-10

16mm Code = Length-T5-16

25mm Code = Length-T5-25

Off standard widths are available on request.

Code & Pitch	Number of Teeth	Pitch Length mm
260-T10DL	26	260.0
530-T10DL	53	530.0
600-T10DL	60	600.0
630-T10DL	63	630.0
660-T10DL	66	660.0
720-T10DL	72	720.0
840-T10DL	84	840.0
920-T10DL	92	920.0
980-T10DL	98	980.0
1210-T10DL	121	1210.0
1240-T10DL	124	1240.0
1250-T10DL	125	1250.0
1320-T10DL	132	1320.0
1350-T10DL	135	1350.0
1420-T10DL	142	1420.0
1610-T10DL	161	1610.0
1880-T10DL	188	1880.0

Standard widths of:-

16mm Code = Length-T10-16

25mm Code = Length-T10-25

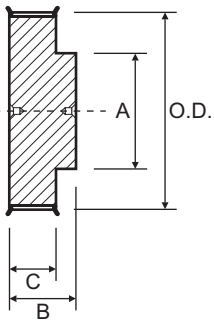
32mm Code = Length-T10-32

50mm Code = Length-T10-50

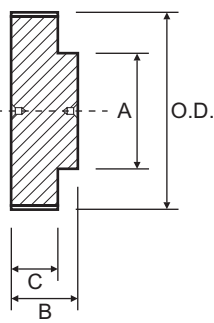
Off standard widths are available on request.

T2.5 Metric Timing Pulleys

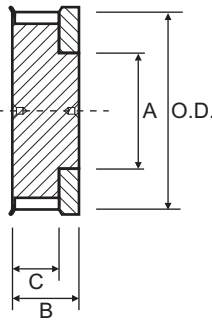
Type 1



Type 7



Type 8

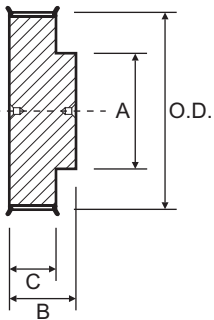


T2.5-6					
Suit 6mm wide belt					
Part No.	O.D.	Type	A	B	C = 10.0
12-T2.5-6F	9.0	8	6.5	16.0	Aluminium Flanged
14-T2.5-6F	10.6	8	8.5	16.0	
15-T2.5-6F	11.4	8	10.0	16.0	
16-T2.5-6F.	12.2	1	9.0	16.0	
18-T2.5-6F	13.8	1	9.0	16.0	
19-T2.5-6F	14.6	1	9.0	16.0	
20-T2.5-6F	15.4	1	11.0	16.0	
22-T2.5-6F	17.0	1	11.0	16.0	
24-T2.5-6F	18.6	1	12.0	16.0	
25-T2.5-6F	19.4	1	13.0	16.0	
26-T2.5-6F	20.2	1	14.0	16.0	
28-T2.5-6F	21.8	1	14.0	16.0	
30-T2.5-6F	23.4	1	16.0	16.0	
32-T2.5-6F	25.0	1	16.0	16.0	
36-T2.5-6F	28.1	1	20.0	16.0	
40-T2.5-6F	31.3	1	22.0	16.0	
44-T2.5-6F	34.5	1	24.0	16.0	
48-T2.5-6	37.7	7	28.0	16.0	
60-T2.5-6	47.3	7	34.0	16.0	

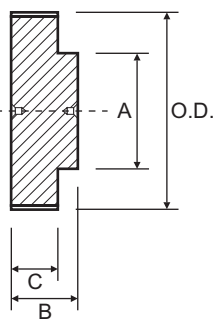
N.F. - No Flanges

T5 Metric Timing Pulleys

Type 1



Type 7

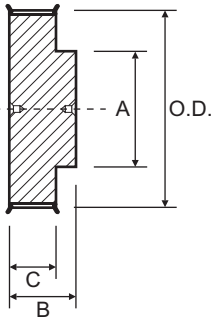


T5-10						T5-16					
Suit 10mm wide belt						Suit 16mm wide belt					
Part No.	O.D.	Type	A	B	C = 15.0	Part No.	O.D.	Type	A	B	C = 21.0
10-T5-10F	15.1	1	8.0	21.0	Aluminium Flanged	10-T5-16F	15.1	1	8.0	27.0	Aluminium Flanged
12-T5-10F	18.3	1	11.0	21.0		12-T5-16F	18.3	1	11.0	27.0	
14-T5-10F	21.5	1	14.0	21.0		14-T5-16F	21.5	1	14.0	27.0	
15-T5-10F	23.1	1	16.0	21.0		15-T5-16F	23.1	1	16.0	27.0	
16-T5-10F	24.6	1	18.0	21.0		16-T5-16F	24.6	1	18.0	27.0	
18-T5-10F	27.8	1	20.0	21.0		18-T5-16F	27.8	1	20.0	27.0	
19-T5-10F	29.4	1	22.0	21.0		19-T5-16F	29.4	1	22.0	27.0	
20-T5-10F	31.0	1	23.0	21.0		20-T5-16F	31.0	1	23.0	27.0	
22-T5-10F	34.3	1	24.0	21.0		22-T5-16F	34.3	1	24.0	27.0	
24-T5-10F	37.4	1	26.0	21.0		24-T5-16F	37.4	1	26.0	27.0	
25-T5-10F	39.0	1	26.0	21.0		25-T5-16F	39.0	1	26.0	27.0	
26-T5-10F	40.6	1	26.0	21.0		26-T5-16F	40.6	1	26.0	27.0	
27-T5-10F	42.2	1	30.0	21.0		27-T5-16F	42.2	1	30.0	27.0	
28-T5-10F	43.8	1	32.0	21.0		28-T5-16F	43.8	1	32.0	27.0	
30-T5-10F	47.0	1	34.0	21.0		30-T5-16F	47.0	1	34.0	27.0	
32-T5-10F	50.1	1	38.0	21.0		32-T5-16F	50.1	1	38.0	27.0	
36-T5-10F	56.5	1	38.0	21.0		36-T5-16F	56.5	1	38.0	27.0	
40-T5-10F	62.9	1	40.0	21.0		40-T5-16F	62.9	1	40.0	27.0	
42-T5-10F	66.0	1	40.0	21.0		42-T5-16F	66.0	1	40.0	27.0	
44-T5-10	69.2	7	45.0	21.0		44-T5-16	69.2	7	45.0	27.0	
48-T5-10	75.6	7	50.0	21.0	48-T5-16	75.6	7	50.0	27.0		
60-T5-10	94.7	7	65.0	21.0	60-T5-16	94.7	7	65.0	27.0		
					N.F.						N.F.

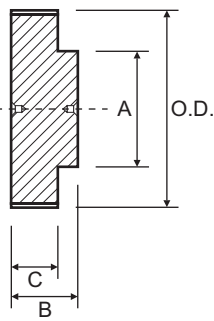
N.F. - No Flanges

T5 Metric Timing Pulleys

Type 1



Type 7



T5-25				
Suit 25mm wide belt				
Part No.	O.D.	Type	A	B
10-T5-25F	15.1	1	8.0	36.0
12-T5-25F	18.3	1	11.0	36.0
14-T5-25F	21.5	1	14.0	36.0
15-T5-25F	23.1	1	16.0	36.0
16-T5-25F	24.6	1	18.0	36.0
18-T5-25F	27.8	1	20.0	36.0
19-T5-25F	29.4	1	22.0	36.0
20-T5-25F	31.0	1	23.0	36.0
22-T5-25F	34.3	1	24.0	36.0
24-T5-25F	37.4	1	26.0	36.0
25-T5-25F	39.0	1	26.0	36.0
26-T5-25F	40.6	1	26.0	36.0
27-T5-25F	42.2	1	30.0	36.0
28-T5-25F	43.8	1	32.0	36.0
30-T5-25F	47.0	1	34.0	36.0
32-T5-25F	50.1	1	38.0	36.0
36-T5-25F	56.5	1	38.0	36.0
40-T5-25F	62.9	1	40.0	36.0
42-T5-25F	66.0	1	40.0	36.0
44-T5-25	69.2	7	45.0	36.0
48-T5-25	75.6	7	50.0	36.0
60-T5-25	94.7	7	65.0	36.0

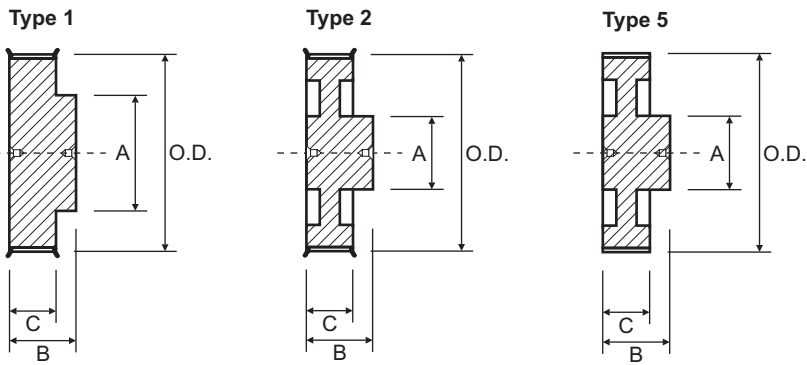
Aluminium

Flanged

N.F.

N.F. - No Flanges

T10 Metric Timing Pulleys

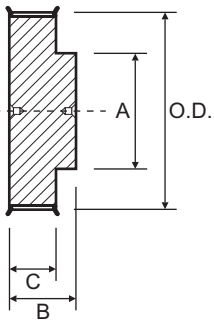


T10-16					T10-25						
Suit 16mm wide belt					Suit 25mm wide belt						
Part No.	O.D.	Type	A	B	C = 21.0	Part No.	O.D.	Type	A	B	C = 30.0
12-T10-16F	36.4	1	28.0	31.0	Aluminium Flanged	12-T10-25F	36.4	1	28.0	40.0	Aluminium Flanged
14-T10-16F	42.7	1	32.0	31.0		14-T10-25F	42.7	1	32.0	40.0	
15-T10-16F	45.9	1	32.0	31.0		15-T10-25F	45.9	1	32.0	40.0	
16-T10-16F	49.1	1	35.0	31.0		16-T10-25F	49.1	1	35.0	40.0	
18-T10-16F	55.5	1	40.0	31.0		18-T10-25F	55.5	1	40.0	40.0	
19-T10-16F	58.6	1	44.0	31.0		19-T10-25F	58.6	1	44.0	40.0	
20-T10-16F	61.8	1	46.0	31.0		20-T10-25F	61.8	1	46.0	40.0	
22-T10-16F	68.2	1	52.0	31.0		22-T10-25F	68.2	1	52.0	40.0	
24-T10-16F	74.6	1	58.0	31.0		24-T10-25F	74.6	1	58.0	40.0	
25-T10-16F	77.7	1	60.0	31.0		25-T10-25F	77.7	1	60.0	40.0	
26-T10-16F	80.9	1	60.0	31.0		26-T10-25F	80.9	1	60.0	40.0	
27-T10-16F	84.1	1	60.0	31.0		27-T10-25F	84.1	1	60.0	40.0	
28-T10-16F	87.3	1	60.0	31.0		28-T10-25F	87.3	1	60.0	40.0	
30-T10-16F	93.7	1	60.0	31.0		30-T10-25F	93.7	1	60.0	40.0	
32-T10-16F	100.0	1	65.0	31.0		32-T10-25F	100.0	1	65.0	40.0	
36-T10-16F	112.8	1	70.0	31.0		36-T10-25F	112.8	1	70.0	40.0	
40-T10-16F	125.5	2	80.0	31.0		40-T10-25F	125.5	2	80.0	40.0	
44-T10-16	138.2	5	88.0	31.0		44-T10-25	138.2	5	88.0	40.0	
48-T10-16	151.0	5	95.0	31.0		48-T10-25	151.0	5	95.0	40.0	
60-T10-16	189.1	5	110.0	31.0		60-T10-25	189.1	5	110.0	40.0	
					N.F.						N.F.

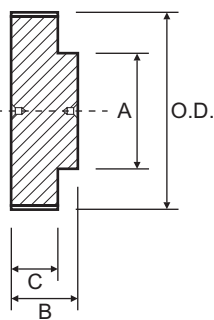
N.F. - No Flanges

T10 Metric Timing Pulleys

Type 1



Type 7



T10-32						T10-50					
Suit 32mm wide belt						Suit 50mm wide belt					
Part No.	O.D.	Type	A	B	C = 37.0	Part No.	O.D.	Type	A	B	C = 56.0
18-T10-32F	55.5	1	40.0	47.0	Aluminium Flanged	18-T10-50F	55.5	1	40.0	66.0	Aluminium Flanged
19-T10-32F	58.6	1	44.0	47.0		19-T10-50F	58.6	1	44.0	66.0	
20-T10-32F	61.8	1	46.0	47.0		20-T10-50F	61.8	1	46.0	66.0	
22-T10-32F	68.2	1	52.0	47.0		22-T10-50F	68.2	1	52.0	66.0	
24-T10-32F	74.6	1	58.0	47.0		24-T10-50F	74.6	1	58.0	66.0	
25-T10-32F	77.7	1	60.0	47.0		25-T10-50F	77.7	1	60.0	66.0	
26-T10-32F	80.9	1	60.0	47.0		26-T10-50F	80.9	1	60.0	66.0	
27-T10-32F	84.1	1	60.0	47.0		27-T10-50F	84.1	1	60.0	66.0	
28-T10-32F	87.3	1	60.0	47.0		28-T10-50F	87.3	1	60.0	66.0	
30-T10-32F	93.7	1	60.0	47.0		30-T10-50F	93.7	1	60.0	66.0	
32-T10-32F	100.0	1	65.0	47.0		32-T10-50F	100.0	1	65.0	66.0	
36-T10-32F	112.8	1	70.0	47.0		36-T10-50F	112.8	1	70.0	66.0	
40-T10-32F	125.5	2	80.0	47.0		40-T10-50F	125.5	2	80.0	66.0	
44-T10-32	138.2	5	88.0	47.0		44-T10-50	138.2	5	88.0	66.0	
48-T10-32	151.0	5	95.0	47.0	48-T10-50	151.0	5	95.0	66.0		
60-T10-32	189.1	5	110.0	47.0	60-T10-50	189.1	5	110.0	66.0		

N.F. - No Flanges

Metric Timing Belts AT5 & AT10



	Pitch (mm)	T	B
AT5	5.00	1.20	2.50
AT10	10.00	2.70	4.50

Code & Pitch	Number of Teeth	Pitch Length mm
225-AT5	45	225.0
255-AT5	51	255.0
275-AT5	55	275.0
280-AT5	56	280.0
300-AT5	60	300.0
330-AT5	66	330.0
340-AT5	68	340.0
375-AT5	75	375.0
390-AT5	78	390.0
420-AT5	84	420.0
450-AT5	90	450.0
455-AT5	91	455.0
500-AT5	100	500.0
545-AT5	109	545.0
600-AT5	120	600.0
610-AT5	122	610.0
630-AT5	126	630.0
660-AT5	132	660.0
710-AT5	142	710.0
720-AT5	144	720.0
750-AT5	150	750.0
780-AT5	156	780.0
825-AT5	165	825.0
860-AT5	172	860.0
975-AT5	195	975.0
1050-AT5	210	1050.0
1125-AT5	225	1125.0
1500-AT5	300	1500.0
2000-AT5	400	2000.0

Standard widths of:-
 10mm Code = Length-AT5-10
 16mm Code = Length-AT5-16
 25mm Code = Length-AT5-25
 Off standard widths are available on request.
 Long Length up to 32mm wide is available.

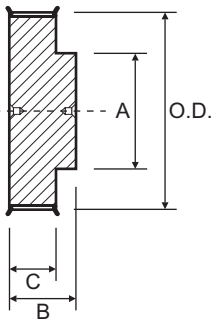
Code & Pitch	Number of Teeth	Pitch Length mm
500-AT10	50	500.0
560-AT10	56	560.0
600-AT10	60	600.0
610-AT10	61	610.0
660-AT10	66	660.0
700-AT10	70	700.0
730-AT10	73	730.0
780-AT10	78	780.0
800-AT10	80	800.0
810-AT10	81	810.0
840-AT10	84	840.0
880-AT10	88	880.0
890-AT10	89	890.0
920-AT10	92	920.0
960-AT10	96	960.0
980-AT10	98	980.0
1000-AT10	100	1000.0
1010-AT10	101	1010.0
1050-AT10	105	1050.0
1080-AT10	108	1080.0
1100-AT10	110	1100.0
1150-AT10	115	1150.0
1200-AT10	120	1200.0
1210-AT10	121	1210.0
1220-AT10	122	1220.0

Code & Pitch	Number of Teeth	Pitch Length mm
1250-AT10	125	1250.0
1280-AT10	128	1280.0
1300-AT10	130	1300.0
1320-AT10	132	1320.0
1350-AT10	135	1350.0
1360-AT10	136	1360.0
1400-AT10	140	1400.0
1420-AT10	142	1420.0
1480-AT10	148	1480.0
1500-AT10	150	1500.0
1600-AT10	160	1600.0
1700-AT10	170	1700.0
1720-AT10	172	1720.0
1800-AT10	180	1800.0
1860-AT10	186	1860.0
1940-AT10	194	1940.0

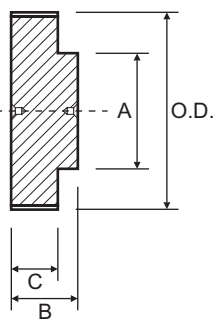
Standard widths of:-
 16mm Code = Length-AT10-16
 25mm Code = Length-AT10-25
 32mm Code = Length-AT10-32
 50mm Code = Length-AT10-50
 Off standard widths are available on request.
 Long Length up to 50mm wide is available.

AT5 Metric Timing Pulleys

Type 1



Type 7



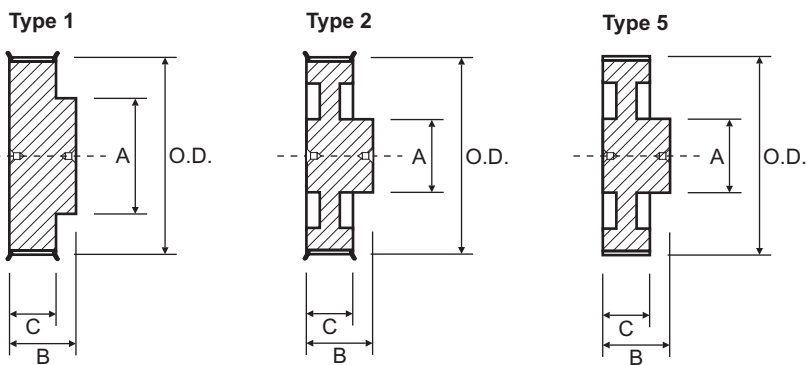
AT5-25

Suit 25mm wide belt

Part No.	O.D.	Type	A	B	C = 30.0
12-AT5-25F	17.9	1	11.0	36.0	Aluminium Flanged
14-AT5-25F	21.1	1	14.0	36.0	
15-AT5-25F	22.7	1	16.0	36.0	
16-AT5-25F	24.2	1	18.0	36.0	
18-AT5-25F	27.4	1	20.0	36.0	
19-AT5-25F	29.0	1	22.0	36.0	
20-AT5-25F	30.6	1	23.0	36.0	
22-AT5-25F	34.9	1	24.0	36.0	
24-AT5-25F	37.0	1	26.0	36.0	
25-AT5-25F	38.6	1	26.0	36.0	
26-AT5-25F	40.2	1	26.0	36.0	
27-AT5-25F	41.8	1	30.0	36.0	
28-AT5-25F	43.4	1	32.0	36.0	
30-AT5-25F	46.6	1	34.0	36.0	
32-AT5-25F	49.7	1	38.0	36.0	
36-AT5-25F	56.1	1	38.0	36.0	
40-AT5-25F	62.5	1	40.0	36.0	
42-AT5-25F	65.6	1	40.0	36.0	
44-AT5-25	68.8	7	45.0	36.0	N.F.
48-AT5-25	75.2	7	50.0	36.0	
60-AT5-25	94.3	7	65.0	36.0	

N.F. - No Flanges

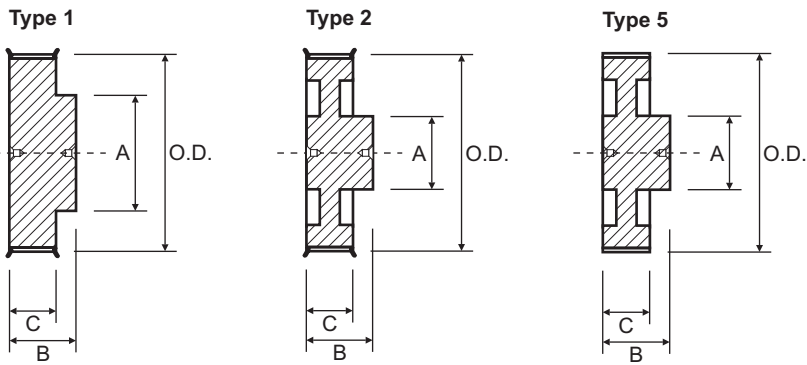
AT10 Metric Timing Pulleys



AT10-16						AT10-25					
Suit 16mm wide belt						Suit 25mm wide belt					
Part No.	O.D.	Type	A	B	C = 21.0	Part No.	O.D.	Type	A	B	C = 30.0
15-AT10-16F	45.9	1	32.0	31.0	Aluminium Flanged	15-AT10-25F	45.9	1	32.0	40.0	Aluminium Flanged
16-AT10-16F	49.1	1	35.0	31.0		16-AT10-25F	49.1	1	35.0	40.0	
18-AT10-16F	55.5	1	40.0	31.0		18-AT10-25F	55.5	1	40.0	40.0	
19-AT10-16F	58.6	1	44.0	31.0		19-AT10-25F	58.6	1	44.0	40.0	
20-AT10-16F	61.8	1	46.0	31.0		20-AT10-25F	61.8	1	46.0	40.0	
22-AT10-16F	68.2	1	52.0	31.0		22-AT10-25F	68.2	1	52.0	40.0	
24-AT10-16F	74.6	1	58.0	31.0		24-AT10-25F	74.6	1	58.0	40.0	
25-AT10-16F	77.7	1	60.0	31.0		25-AT10-25F	77.7	1	60.0	40.0	
26-AT10-16F	80.9	1	60.0	31.0		26-AT10-25F	80.9	1	60.0	40.0	
27-AT10-16F	84.1	1	60.0	31.0		27-AT10-25F	84.1	1	60.0	40.0	
28-AT10-16F	87.3	1	60.0	31.0		28-AT10-25F	87.3	1	60.0	40.0	
30-AT10-16F	93.7	1	60.0	31.0		30-AT10-25F	93.7	1	60.0	40.0	
32-AT10-16F	100.0	1	65.0	31.0		32-AT10-25F	100.0	1	65.0	40.0	
36-AT10-16F	112.8	1	70.0	31.0		36-AT10-25F	112.8	1	70.0	40.0	
40-AT10-16F	125.5	2	80.0	31.0	40-AT10-25F	125.5	2	80.0	40.0		
44-AT10-16	138.2	5	88.0	31.0	44-AT10-25	138.2	5	88.0	40.0		
48-AT10-16	151.0	5	95.0	31.0	48-AT10-25	151.0	5	95.0	40.0		
60-AT10-16	189.1	5	110.0	31.0	N.F.	60-AT10-25	189.1	5	110.0	40.0	

N.F. - No Flanges

AT10 Metric Timing Pulleys



AT10-32					AT10-50						
Suit 32mm wide belt					Suit 50mm wide belt						
Part No.	O.D.	Type	A	B	C = 37.0	Part No.	O.D.	Type	A	B	C = 56.0
18-AT10-32F	55.5	1	40.0	47.0	Aluminium	Flanged	18-AT10-50F	55.5	1	40.0	66.0
19-AT10-32F	58.6	1	44.0	47.0			19-AT10-50F	58.6	1	44.0	66.0
20-AT10-32F	61.8	1	46.0	47.0			20-AT10-50F	61.8	1	46.0	66.0
22-AT10-32F	68.2	1	52.0	47.0			22-AT10-50F	68.2	1	52.0	66.0
24-AT10-32F	74.6	1	58.0	47.0			24-AT10-50F	74.6	1	58.0	66.0
25-AT10-32F	77.7	1	60.0	47.0			25-AT10-50F	77.7	1	60.0	66.0
26-AT10-32F	80.9	1	60.0	47.0			26-AT10-32F	80.9	1	60.0	66.0
27-AT10-32F	84.1	1	60.0	47.0			27-AT10-50F	84.1	1	60.0	66.0
28-AT10-32F	87.3	1	60.0	47.0			28-AT10-50F	87.3	1	60.0	66.0
30-AT10-32F	93.7	1	60.0	47.0			30-AT10-50F	93.7	1	60.0	66.0
32-AT10-32F	100.0	1	65.0	47.0			32-AT10-50F	100.0	1	65.0	66.0
36-AT10-32F	112.8	1	70.0	47.0			36-AT10-50F	112.8	1	70.0	66.0
40-AT10-32F	125.5	2	80.0	47.0			40-AT10-50F	125.5	2	80.0	66.0
44-AT10-32	138.2	5	88.0	47.0			N.F.	44-AT10-50	138.2	5	88.0
48-AT10-32	151.0	5	95.0	47.0	48-AT10-50	151.0		5	95.0	66.0	
60-AT10-32	189.1	5	110.0	47.0	60-AT10-50	189.1		5	110.0	66.0	

N.F. - No Flanges