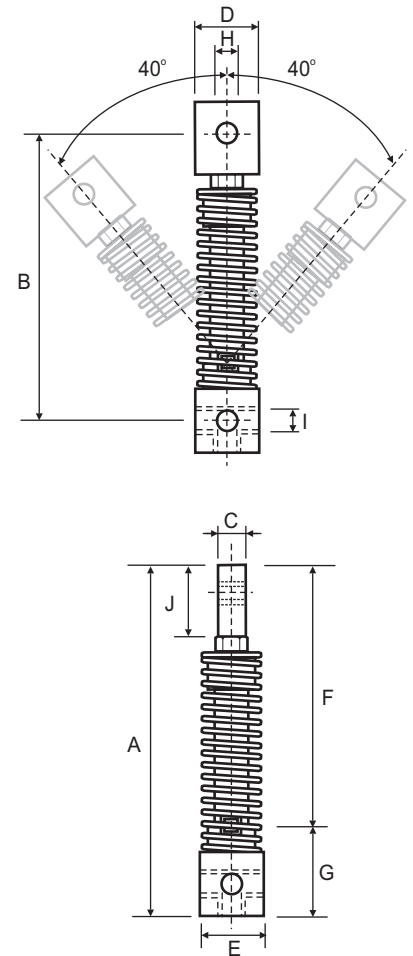




## ARCO TENSIONER\*

\*PATENTED

The ARCO Tensioner is very slim, making it ideal for very narrow applications. With many different ways of fitting the ARCO, the installation applications are endless. It can move 40 degrees in both directions and be used in conjunction with Sprockets and Polyethylene Slide Blocks to suit British Standard simple, duplex and triplex chain, and Rollers in both zinc plated steel and plastic.



Part No.	A	B	C	D	E	F	G	H	I	J	Newton 0° - 40°
AB10.8	102.5	80.0	15.0	20.0	25.0	67.5	35.0	M8	M8	30.0	0-90
AB10.10	102.5	80.0	15.0	20.0	25.0	67.5	35.0	M10	M8	30.0	0-90
AB20.10	122.5	100.0	15.0	20.0	25.0	87.5	35.0	M10	M10	30.0	0-135
AB20.16	122.5	100.0	15.0	30.0	25.0	87.5	35.0	M16	M10	30.0	0-135
AB30.10	122.5	100.0	15.0	20.0	25.0	87.5	35.0	M10	M12	30.0	0-275
AB30.16	122.5	100.0	15.0	30.0	25.0	87.5	35.0	M16	M12	30.0	0-275
AB40.12	160.0	130.0	20.0	30.0	35.0	110.0	50.0	M12	M16	35.0	0-750
AB40.16	160.0	130.0	20.0	30.0	35.0	110.0	50.0	M16	M16	35.0	0-750
AB50.16	215.0	175.0	30.0	45.0	50.0	145.0	70.0	M16	M20	45.0	0-1400
AB50.20	215.0	175.0	30.0	45.0	50.0	145.0	70.0	M20	M20	45.0	0-1400
AB60.20	270.0	220.0	35.0	50.0	70.0	175.0	95.0	M20	M24	50.0	0-2360

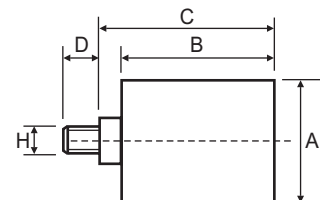
## ARCO TENSIONER ROLLER KITS

There are two different types of rollers that are available to suit the ARCO, steel and plastic (polyamide). The steel rollers are zinc plated for longer life and both rollers are fitted with greased bearings. The steel rollers can be used in temperatures up to +100°C while the plastic rollers may only be used up to +70°C.



Part No.	A	B	C	D	H	To Suit
RP1, RU1	30.0	35.0	38.0	13.0	M8	AB10.8
RP2/3, RU2/3	40.0	45.0	51.0	16.0	M10	AB20.10
RP4	60.0	60.0	68.0	21.0	M12	AB40.12
RU4	60.0	60.0	68.0	21.0	M16	AB40.16
RP5, RU5	80.0	90.0	99.0	28.0	M20	AB50.20
RP6, RU6	90.0	135.0	142.0	27.0	M20	AB60.20

RP - Polyamide Roller  
RU - Zinc Plated Steel Roller





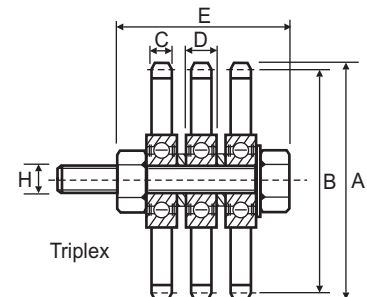
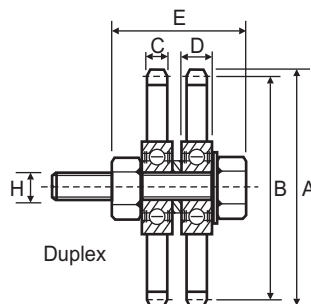
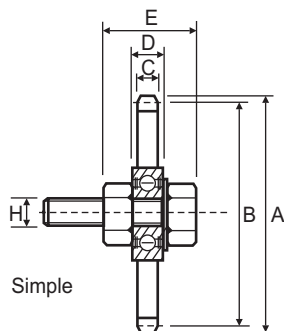
## ARCO TENSIONER SPROCKETS

Sprockets to suit the ARCO are manufactured in steel and are zinc plated. They are available to suit British Standard simple, duplex and triplex chains. The assembly is supplied with a bearing and bolt set. They can be used at speeds up to 60m/min and temperatures up to +100°C.



Part No.	Z	Chain	A	B	C	D	E	H	To Suit
<i>Simple</i>									
KB20-1S	15	06B-1	49.3	45.8	5.3	9.0	26.0	M10	AB20.10
KB30-1S	15	06B-1	49.3	45.8	5.3	9.0	26.0	M10	AB30.10
KB30-2S	15	08B-1	65.5	61.1	7.2	9.0	26.0	M10	AB30.10
KB40-3S	15	10B-1	83.0	76.4	9.1	12.0	35.0	M12	AB40.12
KB40-4S	15	12B-1	99.8	91.6	11.1	12.0	35.0	M12	AB40.12
KB50-4S	15	12B-1	99.8	91.6	11.1	15.0	43.0	M20	AB50.20
KB50-5S	13	16B-1	117.0	106.1	16.2	15.0	47.0	M20	AB50.20
KB60-6S	13	20B-1	147.8	132.7	18.5	15.0	58.0	M20	AB60.20
KB60-7S	11	24B-1	150.0	135.2	24.1	15.0	60.0	M20	AB60.20
<i>Duplex</i>									
KB20-1D	15	06B-2	49.3	45.8	5.3	9.0	36.0	M10	AB20.10
KB30-1D	15	06B-2	49.3	45.8	5.3	9.0	36.0	M10	AB30.10
KB30-2D	15	08B-2	65.5	61.1	7.2	9.0	40.0	M10	AB30.10
KB40-3D	15	10B-2	83.0	76.4	9.1	12.0	51.0	M12	AB40.12
KB40-4D	15	12B-2	99.8	91.6	11.1	12.0	55.0	M12	AB40.12
KB50-4D	15	12B-2	99.8	91.6	11.1	15.0	63.0	M20	AB50.20
KB50-5D	13	16B-2	117.0	106.1	16.2	15.0	79.0	M20	AB50.20
<i>Triplex</i>									
KB30-1T	15	06B-3	49.3	45.8	5.3	9.0	47.0	M10	AB30.10
KB40-2T	15	08B-3	65.5	61.1	7.2	12.0	58.0	M12	AB40.12
KB50-4T	15	12B-3	99.8	91.6	11.1	15.0	82.0	M20	AB50.20
KB60-5T	13	16B-3	117.0	106.1	16.2	15.0	118.0	M20	AB60.20

Z = No. of teeth



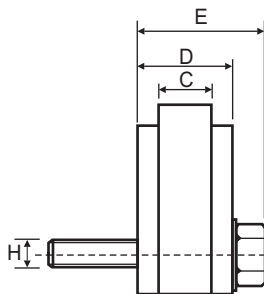


## ARCO TENSIONER SLIDE BLOCKS

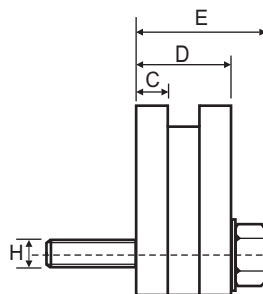
The ARCO Tensioner Slide Block consists of a polyethylene slide block and steel screw. It is available for use with British Standard simple, duplex and triplex chains. The Polyethylene Slide Block is normally used in slower speed applications and has an operating speed range up to 20m/min and a maximum working temperature of +70°C.



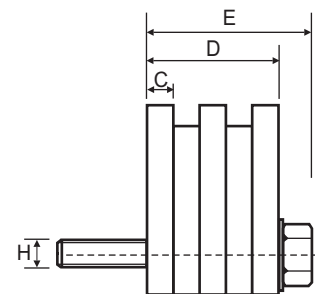
Part No.	Chain	C	D	E	H	R	To Suit
<i>Simple</i>							
VB10-0S	05B-1	2.5	10.0	19.0	M10	35.0	AB10.10
VB10-1S	06B-1	5.0	10.0	19.0	M10	35.0	AB10.10
VB20-2S	08B-1	7.0	14.0	23.0	M10	35.0	AB20.10
VB30-2S	08B-1	7.0	14.0	23.0	M10	35.0	AB30.10
VB30-3S	10B-1	9.0	16.5	25.5	M10	45.0	AB30.10
VB30-4S	12B-1	11.0	17.5	26.5	M10	45.0	AB30.10
VB40-4S	12B-1	11.0	17.5	28.0	M12	45.0	AB40.12
VB40-5S	16B-1	16.0	18.0	28.5	M12	55.0	AB40.12
VB50-6S	20B-1	18.0	20.0	33.0	M16	55.0	AB50.16
VB50-7S	24B-1	24.0	24.0	37.0	M16	55.0	AB50.16
<i>Duplex</i>							
VB10-1D	06B-2	5.0	18.0	27.0	M10	35.0	AB10.10
VB20-2D	08B-2	7.0	20.5	29.5	M10	35.0	AB20.10
VB30-2D	08B-2	7.0	20.5	29.5	M10	35.0	AB30.10
VB30-3D	10B-2	9.0	25.0	34.0	M10	45.0	AB30.10
VB30-4D	12B-2	11.0	30.0	39.0	M10	45.0	AB30.10
VB40-4D	12B-2	11.0	30.0	40.5	M12	45.0	AB40.12
VB40-5D	16B-2	16.0	47.0	57.5	M12	55.0	AB40.12
VB50-5D	16B-2	16.0	47.0	60.0	M16	55.0	AB50.16
<i>Triplex</i>							
VB20-1T	06B-3	5.0	25.0	39.0	M10	35.0	AB20.10
VB30-2T	08B-3	7.0	34.0	43.0	M10	35.0	AB30.10
VB40-4T	12B-3	11.0	49.0	59.5	M12	45.0	AB40.12
VB40-5T	16B-3	16.0	79.5	90.0	M12	55.0	AB40.12
VB50-5T	16B-3	16.0	79.5	92.5	M16	55.0	AB50.16



Simple



Duplex



Triplex

