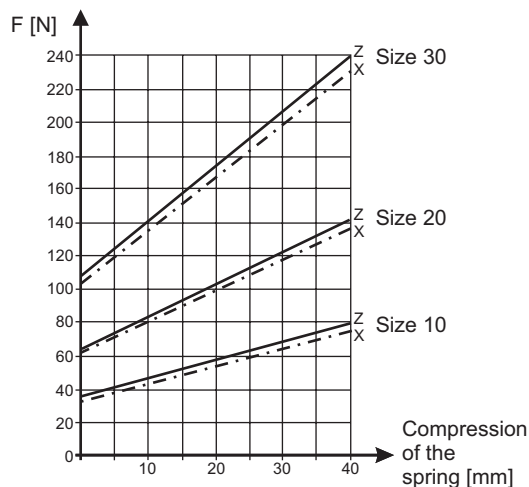
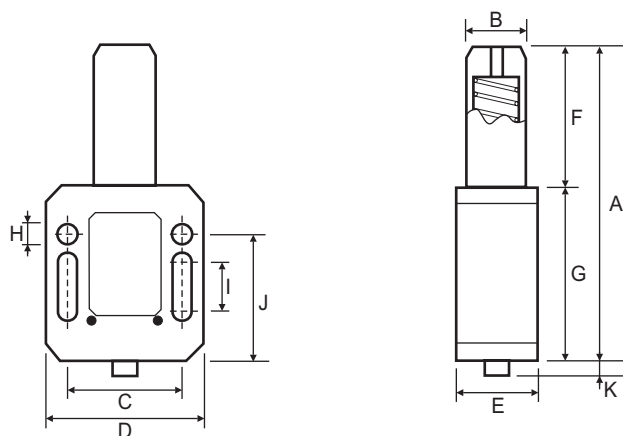




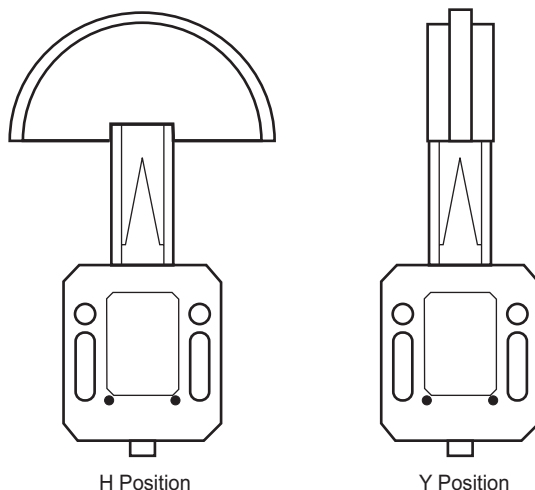
BLU TENSIONER*

*PATENTED

The BLU Tensioner is manufactured in plastic and uses stainless steel screws. The internal spring is available in zinc plated steel or stainless steel. Maximum operating temperature is +80°C. All bodies are supplied with a preloading system to allow the unit to be bolted into position and then release the tension. The tensioner can be fitted with a variety of different accessories including Sprockets or Polyethylene Slide Blocks to suit British Standard simple and duplex chain, and Rollers in zinc plated steel and plastic. The stroke length of the BLU is 40mm. Unless specified, the BLU tensioner will be assembled in the H position.



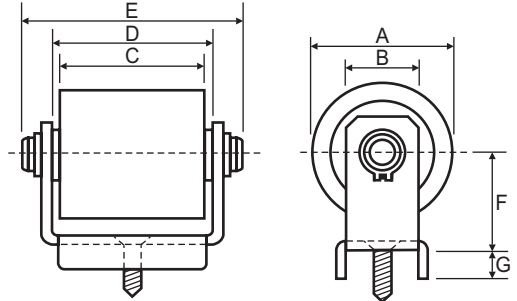
Part No.	A	B	C	D	E	F	G	H	I	J	K	Newton
<i>Spring in zinc plated steel</i>												
BL 10-6 Z	105.0	20.0	38.0	52.0	27.0	47.0	58.0	6.5	16.5	42.0	5.0	36-79
BL 20-6 Z	105.0	20.0	38.0	52.0	27.0	47.0	58.0	6.5	16.5	42.0	5.0	64-142
BL 30-6 Z	105.0	20.0	38.0	52.0	27.0	47.0	58.0	6.5	16.5	42.0	5.0	108-239
<i>Spring in stainless steel</i>												
BL 10-6 X	105.0	20.0	38.0	52.0	27.0	47.0	58.0	6.5	16.5	42.0	5.0	35-77
BL 20-6 X	105.0	20.0	38.0	52.0	27.0	47.0	58.0	6.5	16.5	42.0	5.0	63-139
BL 30-6 X	105.0	20.0	38.0	52.0	27.0	47.0	58.0	6.5	16.5	42.0	5.0	105-233





BLU TENSIONER ROLLER KIT

The BLU Tensioner Roller Kit consists of a steel fork with a centrally located roller. The rollers are available in plastic (polyamide) or in zinc plated steel, and are fitted with greased bearings. The steel rollers can be used in temperatures up to +80°C while the plastic rollers may only be used up to +70°C.

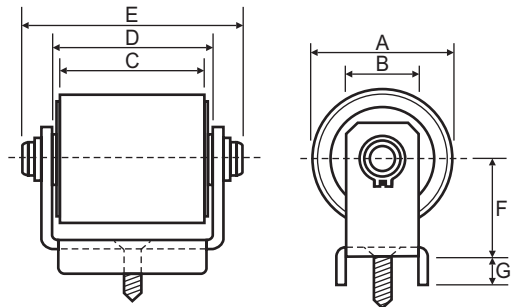


Part No.	A	B	C	D	E	F	G	To Suit
FP1 / FU1	30.0	20.0	35.0	45.0	60.0	23.0	8.0	BL 10 & BL 20
FP2/3, FU2/3	40.0	20.0	45.0	52.0	66.0	28.0	8.0	BL 20 & BL 30

FP - Polyamide Roller
FU - Zinc Plated Steel Roller

BLU TENSIONER ROLLER KIT WITH SHIELDS

The BLU Tensioner Roller Kit with Shields consists of a stainless steel fork with a centrally located roller. The rollers are available in plastic (polyamide) or in stainless steel, and are fitted with greased bearings with cover shields. Both rollers are suitable for use in the food industry or in other applications where environmental issues require high grade material. The steel rollers can be used in temperatures up to +80°C while the plastic rollers may only be used up to +70°C.

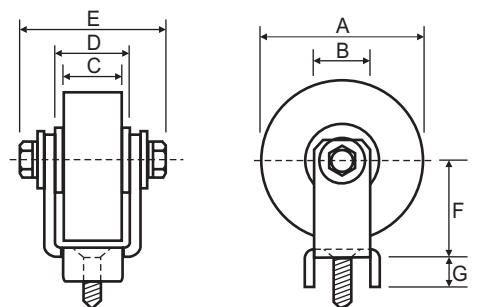


Part No.	A	B	C	D	E	F	G	To Suit
FPX1 / FUX1	30.0	20.0	35.0	45.0	54.0	23.0	8.0	BL 10 & BL 20
FPX2/3, FUX2/3	40.0	20.0	45.0	52.0	72.0	28.0	8.0	BL 20 & BL 30

FPX - Polyamide Roller
FUX - Stainless Steel Roller

BLU TENSIONER ROLLER KITS FOR SPECIAL APPLICATIONS

The FG roller is ideal for special applications such as narrow timing belts. The polyamide roller is fitted with small bearings, allowing the roller to be machined to suit V, O-ring or flat belts.

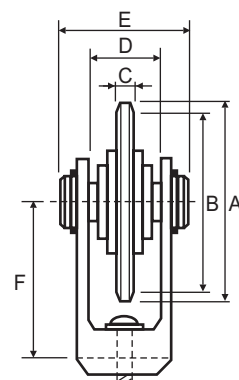


Part No.	A	B	C	D	E	F	G	To Suit
FGA	55.0	20.0	20.0	25.0	45.0	34.0	8.0	BL 10 & BL 20
FGB	55.0	20.0	30.0	35.0	55.0	34.0	8.0	BL 20 & BL 30
FGC	55.0	20.0	40.0	45.0	65.0	34.0	8.0	BL 30

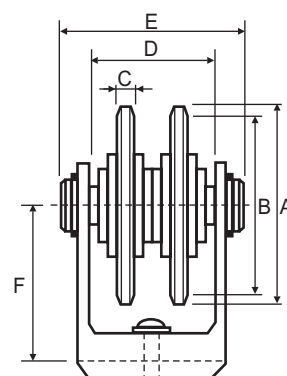


BLU TENSIONER SPROCKET

The BLU Tensioner Sprocket consists of an aluminium fork with a centrally located sprocket to suit British Standard simple or duplex chain. The sprocket is zinc plated steel installed with an enlarged bearing, and is equipped with a stainless steel screw. Maximum operating speed is 60m/min. Maximum operating temperature of the sprocket is +80°C.



Simple



Duplex

Part No.	Z	Chain	A	B	C	D	E	F	To Suit
<i>Simple</i>									
FN20-1S-21	21	06B-1	67.0	63.9	5.3	19.0	39.0	53.5	BL20 & BL30
FN30-2S-16	16	08B-1	69.0	65.1	7.2	19.0	39.0	53.5	BL30
FN30-2S-18	18	08B-1	77.8	73.1	7.2	19.0	39.0	53.5	BL30
FN30-3S-14	14	10B-1	78.0	71.3	9.1	19.0	44.0	63.5	BL30
FN30-3S-17	17	10B-1	93.0	86.4	9.1	19.0	44.0	63.5	BL30
<i>Duplex</i>									
FN30-1D-21	21	06B-2	68.0	63.9	5.3	37.0	60.0	53.5	BL30

Z = No. of teeth

BLU TENSIONER SLIDE BLOCK

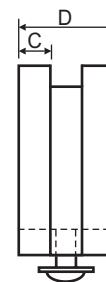
The BLU Tensioner Slide Block consists of a polyethylene slide block and a stainless steel screw. It is available for British Standard simple, duplex and triplex chains. The 'U' style slide block can be used for chain up to 15mm wide. Maximum operating temperature of the sliding block is +70°C, and is suitable for use in the outside environment.



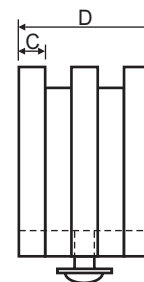
Part No.	Chain	A	C	D	E	R	To Suit
<i>Simple</i>							
VF1S	06B-1	20.0	5.0	20.0		37.5	BL10 & BL20
VF2S	08B-1	20.0	7.0	20.0		37.5	BL20 & BL30
VF3S	10B-1	20.0	9.0	20.0		40.0	BL20 & BL30
VF4S	12B-1	20.0	11.0	20.0		40.0	BL30
<i>U Profile</i>							
VF1U	06B-1	20.0		20.0	15.0	37.5	BL10 & BL20
<i>Duplex</i>							
VF1D	06B-2	20.0	5.0	20.0		37.5	BL10 & BL20
VF2D	08B-2	20.0	7.0	20.0		37.5	BL20 & BL30
VF3D	10B-2	20.0	9.0	25.0		40.0	BL30
<i>Triplex</i>							
VF1T	06B-3	20.0	5.0	25.0		37.5	BL20 & BL30



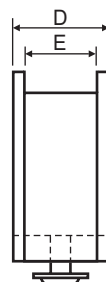
Simple



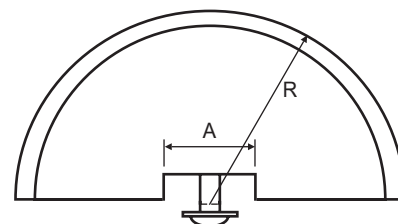
Duplex



Triplex



U Profile



NAISMITH Engineering & Manufacturing Co. Pty. Ltd.