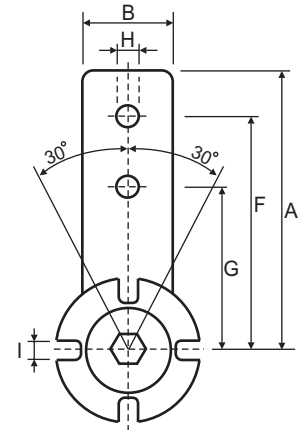


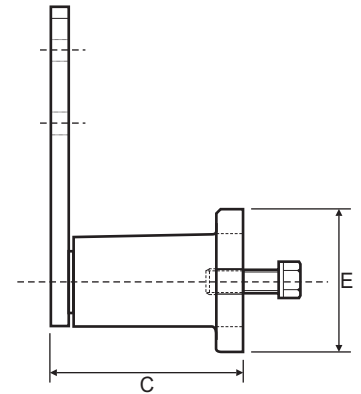


## C-R.E.S.A. STEEL TENSIONER ARM

The C-R.E.S.A. Steel Tensioner Arm is highly elastic and has a great ability to absorb shocks, knocks, vibrations and oscillations. This is produced by four rubber cushions hidden inside the unit. The tensioner arm can reach an angle of 30° in either a clockwise or an anti-clockwise rotation. The tensioner can be fitted with a variety of different accessories including Sprockets or Polyethylene Slide Blocks to suit British Standard simple, duplex and triplex chain, and Rollers in zinc plated steel or plastic. C-R.E.S.A. is manufactured in steel and has a maximum operating temperature of +80°C.



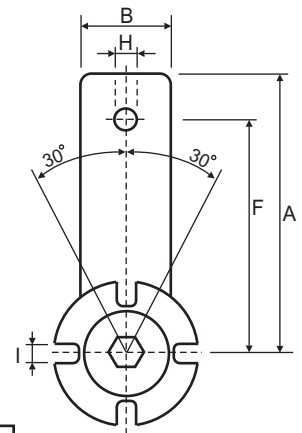
Part No.	A	B	C	E	F	G	H	I	Newton 0° - 30°
T211RE10	90.0	25.0	50.0	40.0	80.0	60.0	8.5	7.0	0-100
T315RE20	112.5	30.0	62.0	50.0	100.0	80.0	10.5	9.0	0-150
T418RE30	115.0	35.0	76.0	60.0	100.0	80.0	10.5	9.0	0-340
T527RE40	155.0	50.0	105.0	80.0	130.0	100.0	12.5	11.0	0-850
T638RE50	205.0	65.0	136.0	100.0	175.0	140.0	20.5	13.0	0-1600
T745RE60	255.0	80.0	196.0	120.0	220.0	180.0	20.5	13.0	0-2500
T850RE70	290.0	90.0	210.0	130.0	250.0	200.0	20.5	17.0	0-4950



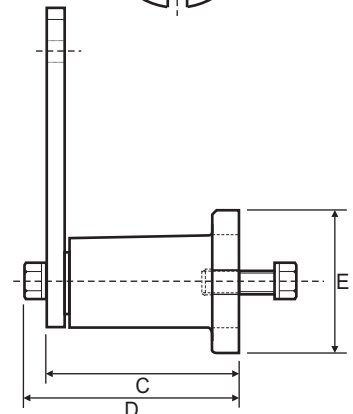
## CIAO PLASTIC TENSIONER ARM\*

The CIAO Plastic Tensioner Arm is highly elastic and has a great ability to absorb shocks, knocks, vibrations and oscillations. This is produced by four rubber cushions hidden inside the unit. The tensioner arm can reach an angle of 30° in either a clockwise or an anti-clockwise rotation. The tensioner can be fitted with a variety of different accessories including British Standard simple Sprockets made of stainless steel or plastic, Polyethylene Slide Blocks to suit simple, duplex and triplex chain and Rollers in stainless steel and plastic with cover shields. The CIAO is manufactured in plastic with stainless steel bolts, and has a maximum operating temperature of +80°C.

\*PATENTED



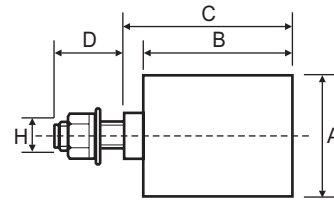
Part No.	A	B	C	D	E	F	H	I	Newton 0° - 30°
T211PXR10	90.0	24.0	52.0	60.0	40.0	80.0	8.5	7.0	0 - 100
T315PXR20	112.5	30.0	65.0	74.0	50.0	100.0	10.5	9.0	0 - 150
T418PXR30	115.0	36.0	78.0	88.0	60.0	100.0	10.5	9.0	0 - 340
T527PXR40	155.0	50.0	107.0	118.0	80.0	130.0	12.5	11.0	0 - 850





## C-R.E.S.A. TENSIONER ROLLER KIT

There are two different types of rollers that are available to suit the C-R.E.S.A., steel and plastic (polyamide). The steel rollers are zinc plated for longer life and both rollers are fitted with greased bearings. The steel rollers can be used in temperatures up to +100°C while the plastic rollers may only be used up to +70°C. By changing the bolts size on this roller it can be used on many of the D.O.M. tensioners.

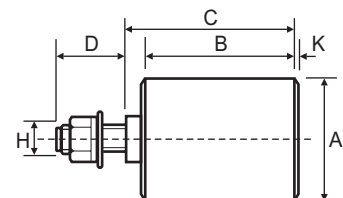


Part No.	A	B	C	D	H	To Suit
RP1, RU1	30.0	35.0	38.0	13.0	M8	T211RE 10
RP2/3, RU2/3	40.0	45.0	51.0	16.0	M10	T315RE 20 T418RE 30
RP4	60.0	60.0	68.0	21.0	M12	T527RE 40
RU4	60.0	60.0	68.0	21.0	M16	T527RE 40
RP5, RU5	80.0	90.0	99.0	28.0	M20	T638RE 50
RP6, RU6	90.0	135.0	142.0	27.0	M20	T745RE 60

RP - Polyamide Roller  
RU - Zinc Plated Steel Roller

## CIAO TENSIONER ROLLER KIT WITH SHIELDS

There are two different types of rollers that are available to suit the CIAO, stainless steel and plastic (polyamide). Both rollers are suitable for use in the food industry or in other applications where environmental issues require high grade materials. The rollers are fitted with greased bearings with cover shields. The stainless steel rollers can be used in temperatures up to +100°C while the plastic rollers may only be used up to +70°C. By changing the bolts size on this roller it can be used on many of the D.O.M. tensioners.



Part No.	A	B	C	D	H	K	To Suit
XRP1, XRU1	30.0	35.0	38.0	13.0	M8	2.0	T211PX10
XRP2/3 XRU2/3	40.0	45.0	51.0	16.0	M10	2.0	T315PX20 T418PX30
XRP4	60.0	60.0	68.0	21.0	M12	2.0	T527PX40
XRU4	60.0	60.0	68.0	21.0	M16	4.0	T527PX40

XRP - Polyamide Roller  
XRU - Stainless Steel Roller



# ARM TENSIONER SPROCKETS

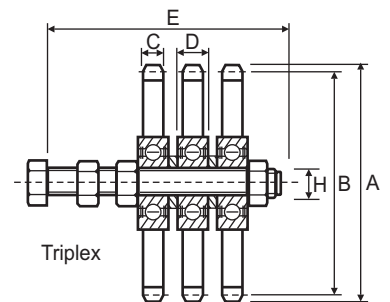
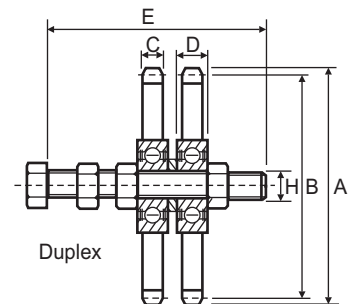
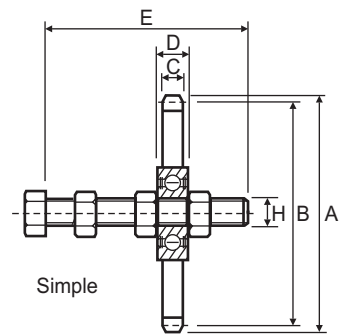


Sprockets to suit the C-R.E.S.A. are manufactured in steel and are zinc plated. They are available to suit British Standard simple, duplex and triplex chains. The assembly is supplied with a bearing and bolt set. They can be used at speeds up to 60m/min and temperatures up to +100°C.

Sprockets to suit the CIAO are available in plastic and stainless steel to suit British Standard simple chains. Assemblies are supplied with a bearing and stainless steel bolt set. These assemblies can be used at speeds up to 60m/min and temperatures up to +100°C.

Part No.	Z	Chain	A	B	C	D	E	H	To Suit Arm
<b>C-R.E.S.A. (with steel nuts and bolts)</b>									
<i>Simple - Zinc Plated Steel</i>									
ZK20-1S	15	06B-1	49.3	45.8	5.3	9.0	55.0	M10	T315RE20
ZK30-1S	15	06B-1	49.3	45.8	5.3	9.0	55.0	M10	T418RE30
ZK30-2S	15	08B-1	65.5	61.1	7.2	9.0	55.0	M10	T418RE30
ZK40-3S	15	10B-1	83.0	76.4	9.1	12.0	80.0	M12	T527RE40
ZK40-4S	15	12B-1	99.8	91.6	11.1	12.0	80.0	M12	T527RE40
ZK50-4S	15	12B-1	99.8	91.6	11.1	15.0	100.0	M20	T638RE50
ZK50-5S	13	16B-1	117.0	106.1	16.2	15.0	100.0	M20	T638RE50
ZK60-6S	13	20B-1	147.8	132.7	18.5	15.0	100.0	M20	T745RE60
ZK60-7S	11	24B-1	150.0	135.2	24.1	15.0	140.0	M20	T745RE60
<i>Duplex - Zinc Plated Steel</i>									
ZK20-1D	15	06B-2	49.3	45.8	5.3	9.0	55.0	M10	T315RE20
ZK30-1D	15	06B-2	49.3	45.8	5.3	9.0	60.0	M10	T418RE30
ZK30-2D	15	08B-2	65.5	61.1	7.2	9.0	60.0	M10	T418RE30
ZK40-3D	15	10B-2	83.0	76.4	9.1	12.0	80.0	M12	T527RE40
ZK40-4D	15	12B-2	99.8	91.6	11.1	12.0	80.0	M12	T527RE40
ZK50-4D	15	12B-2	99.8	91.6	11.1	15.0	120.0	M20	T638RE50
ZK50-5D	13	16B-2	117.0	106.1	16.2	15.0	120.0	M20	T638RE50
ZK60-6D	13	20B-2	147.8	132.7	18.5	15.0	140.0	M20	T745RE60
ZK60-7D	11	24B-2	150.0	135.2	24.1	15.0	140.0	M20	T745RE60
<i>Triplex - Zinc Plated Steel</i>									
ZK30-1T	15	06B-3	49.3	45.8	5.3	9.0	70.0	M10	T418RE30
ZK40-2T	15	08B-3	65.5	61.1	7.2	12.0	80.0	M12	T527RE40
ZK40-3T	15	10B-3	83.0	76.4	9.1	12.0	80.0	M12	T527RE40
ZK50-3T	15	10B-3	83.0	76.4	9.1	15.0	120.0	M20	T638RE50
ZK50-4T	15	12B-3	99.8	91.6	11.1	15.0	120.0	M20	T638RE50
ZK60-5T	13	16B-3	117.0	106.1	16.2	15.0	160.0	M20	T745RE60
ZK60-6T	13	20B-3	147.8	132.7	18.5	15.0	160.0	M20	T745RE60
ZK60-7T	11	24B-3	150.0	135.2	24.1	15.0	180.0	M20	T745RE60
<b>CIAO (with stainless steel nuts and bolts)</b>									
<i>Simple - Plastic</i>									
XZN20-1S	21	06B-1	68.0	63.9	5.3	18.0	55.0	M10	T315PX20
XZN30-1S	21	06B-1	68.0	63.9	5.3	18.0	55.0	M10	T418PX30
XZN30-2S	18	08B-1	77.8	73.1	7.2	18.0	55.0	M10	T418PX30
XZN30-3S	17	10B-1	93.0	86.4	9.1	18.0	55.0	M10	T418PX30
XZN40-3S	17	10B-1	93.0	86.4	9.1	18.0	80.0	M12	T527PX40
<i>Simple - Stainless Steel</i>									
XZK20-1S	15	06B-1	49.3	45.8	5.3	9.0	55.0	M10	T315PX20
XZK30-1S	15	06B-1	49.3	45.8	5.3	9.0	55.0	M10	T418PX30
XZK30-2S	15	08B-1	65.5	61.1	7.2	9.0	55.0	M10	T418PX30
XZK40-3S	15	10B-1	83.0	76.4	9.1	12.0	80.0	M12	T527PX40
XZK40-4S	15	12B-1	99.8	91.6	11.1	12.0	80.0	M12	T527PX40
XZK40-5S	13	16B-1	117.0	106.1	16.2	15.0	100.0	M12	T527PX40

Z = No. of teeth



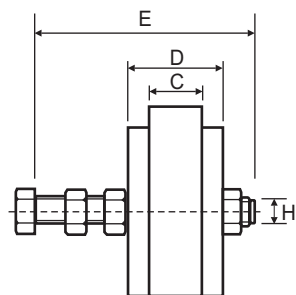


## ARM TENSIONER SLIDE BLOCK

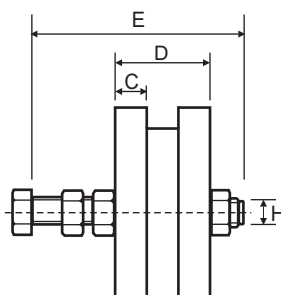
The slide blocks may be used with both the C-R.E.S.A. and CIAO. It is available for use with British Standard simple, duplex and triplex chains. The Polyethylene Slide Block is normally used in slower speed applications and has an operating speed range up to 20m/min and a maximum working temperature of +70°C. When used with the CIAO the part number changes and the standard bolts are replaced with stainless steel.



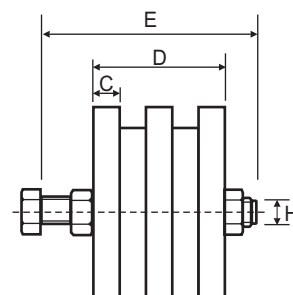
Part No. C-R.E.S.A	Part No. CIAO	Chain	C	D	E	H	R	Suit Arm C-R.E.S.A	Suit Arm CIAO
<i>Simple</i>									
VR10-0S	XVR10-0S	05B-1	2.5	10.0	45.0	M10	35.0	T211RE 10	T211PX10
VR10-1S	XVR10-1S	06B-1	5.0	10.0	45.0	M10	35.0	T211RE 10	T211PX10
VR20-2S	XVR20-2S	08B-1	7.0	14.0	55.0	M10	35.0	T315RE 20	T315PX20
VR30-2S	XVR30-2S	08B-1	7.0	14.0	55.0	M10	35.0	T418RE 30	T418PX30
VR30-3S	XVR30-3S	10B-1	9.0	16.5	55.0	M10	45.0	T418RE 30	T418PX30
VR30-4S	XVR30-4S	12B-1	11.0	17.5	60.0	M10	45.0	T418RE 30	T418PX30
VR40-4S	XVR40-4S	12B-1	11.0	17.5	80.0	M12	45.0	T527RE 40	T527PX40
VR40-5S	XVR40-5S	16B-1	16.0	18.0	80.0	M12	55.0	T527RE 40	T527PX40
VR50-6S		20B-1	18.0	20.0	100.0	M20	55.0	T638RE 50	
VR50-7S		24B-1	24.0	24.0	100.0	M20	55.0	T638RE 50	
<i>Duplex</i>									
VR10-1D	XVR10-1D	06B-2	5.0	18.0	45.0	M10	35.0	T211RE 10	T211PX10
VR20-2D	XVR20-2D	08B-2	7.0	20.5	55.0	M10	35.0	T315RE 20	T315PX20
VR30-2D	XVR30-2D	08B-2	7.0	20.5	60.0	M10	35.0	T418RE 30	T418PX30
VR30-3D	XVR30-3D	10B-2	9.0	25.0	70.0	M10	45.0	T418RE 30	T418PX30
VR40-4D	XVR40-4D	12B-2	11.0	30.0	80.0	M12	45.0	T527RE 40	T527PX40
VR40-5D	XVR40-5D	16B-2	16.0	47.0	90.0	M12	55.0	T527RE 40	T527PX40
VR50-5D		16B-2	16.0	47.0	100.0	M20	55.0	T638RE 50	
<i>Triplex</i>									
VR20-1T	XVR20-1T	06B-3	5.0	25.0	55.0	M10	35.0	T315RE 20	T315PX20
VR30-2T	XVR30-2T	08B-3	7.0	34.0	70.0	M10	35.0	T418RE 30	T418PX30
VR40-3T	XVR40-3T	10B-3	9.0	42.0	100.0	M12	45.0	T527RE 40	T527PX40
VR40-4T	XVR40-4T	12B-3	11.0	49.0	100.0	M12	45.0	T527RE 40	T527PX40
VR40-5T	XVR40-5T	16B-3	16.0	79.5	100.0	M12	55.0	T527RE 40	T527PX40
VR50-5T		16B-3	16.0	79.5	120.0	M20	55.0	T638RE 50	



Simple



Duplex



Triplex

