

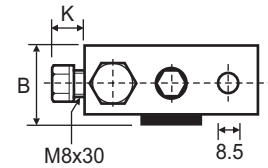
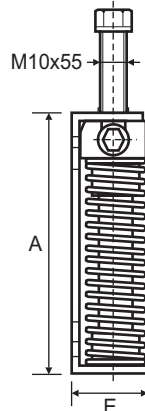
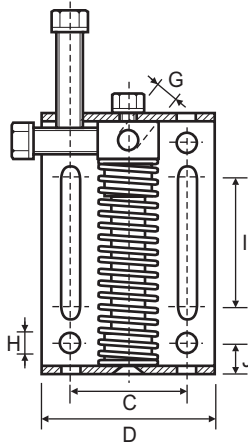


TEN JOY TENSIONER

The TEN JOY Tensioner is ideal for applications which are very tight for room. It can be used in conjunction with Sprockets or Polyethylene Slide Blocks to suit British Standard simple, duplex and triplex chain, and Rollers in both zinc plated steel and plastic.



Part No.	A	B	C	D	E	G	H	I	J	K	Newton
JB10.8	70.0	31.5	46.0	65.0	30.0	M8	6.4	30.0	12.0	11.0	0-100
JB10	70.0	31.5	46.0	65.0	30.0	M10	6.4	30.0	12.0	11.0	0-100
JB20.8	70.0	31.5	46.0	65.0	30.0	M8	6.4	30.0	12.0	11.0	0-170
JB30	70.0	31.5	46.0	65.0	30.0	M10	6.4	30.0	12.0	11.0	0-250
JB40	96.0	31.5	46.0	65.0	30.0	M10	6.4	42.0	12.0	11.0	0-400
JB40.12	96.0	31.5	46.0	65.0	30.0	M12	6.4	42.0	12.0	11.0	0-400



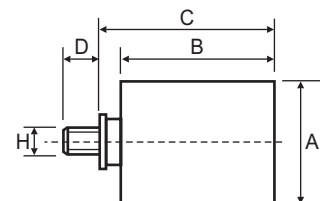
TEN JOY TENSIONER ROLLER KITS

There are two different types of rollers that are available to suit the TEN JOY tensioner, steel and plastic (polyamide). The steel rollers are zinc plated for longer life and both rollers are fitted with greased bearings. The steel rollers can be used in temperatures up to +100°C while the plastic rollers may only be used up to +70°C.



Part No.	A	B	C	D	H	To Suit
PJ1, UJ1	30.0	35.0	40.0	6.0	M8	JB10.8
PJ2/3, UJ2/3	40.0	45.0	53.2	7.0	M10	JB30
PJ4, UJ4	60.0	60.0	70.5	7.0	M12	JB40.12

PJ - Polyamide Roller
 UJ - Zinc Plated Steel Roller



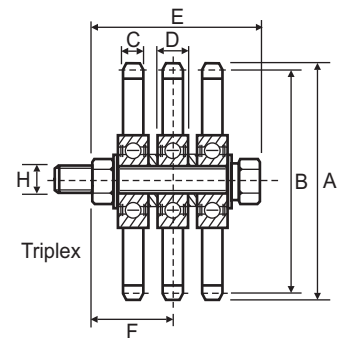
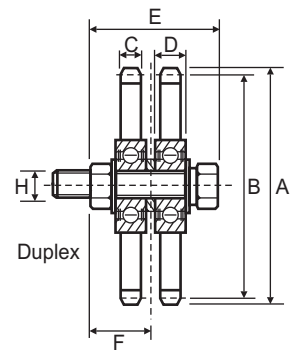
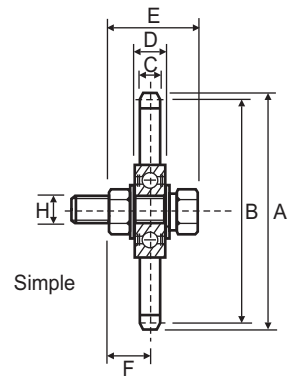


TEN JOY TENSIONER SPROCKETS

Sprockets to suit the TEN JOY are manufactured in steel and are zinc plated. They are available to suit British Standard simple, duplex and triplex chains. The assembly is supplied with a bearing and bolt set. They can be used at speeds up to 60m/min and temperatures up to +100°C.

Part No.	Z	Chain	A	B	C	D	E	F	H	To Suit
<i>Simple</i>										
KJ30-1S	15	06B-1	49.3	45.8	5.3	9.0	30.2	14.5	M10	JB30
KJ30-2S	15	08B-1	65.5	61.1	7.2	9.0	30.2	14.5	M10	JB30
KJ40-3S	15	10B-1	83.0	76.4	9.1	12.0	32.0	15.5	M12	JB40.12
KJ40-4S	15	12B-1	99.8	91.6	11.1	12.0	32.0	15.5	M12	JB40.12
KJ40-5S	13	16B-1	117.0	106.1	16.2	15.0	37.5	17.0	M12	JB40.12
<i>Duplex</i>										
KJ30-1D	15	06B-2	49.3	45.8	5.3	9.0	41.2	20.0	M10	JB30
KJ30-2D	15	08B-2	65.5	61.1	7.2	9.0	41.2	20.0	M10	JB30
KJ40-3D	15	10B-2	83.0	76.4	9.1	9.0	51.5	24.0	M12	JB40.12
KJ40-4D	15	12B-2	99.8	91.6	11.1	12.0	51.5	25.0	M12	JB40.12
<i>Triplex</i>										
KJ30-1T	15	06B-3	49.3	45.8	5.3	9.0	50.2	23.5	M10	JB30
KJ40-2T	15	08B-3	65.5	61.1	7.2	12.0	52.0	25.5	M12	JB40.12

Z = No. of teeth



TEN JOY TENSIONER SLIDE BLOCKS

The TEN JOY Tensioner Slide Block consists of a polyethylene slide block and steel screw. It is available for use with British Standard simple, duplex and triplex chains. The Polyethylene Slide Block is normally used in slower speed applications and has an operating speed range up to 20m/min and a maximum working temperature of +70°C

Part No.	Chain	C	D	E	F	H	R	To Suit
<i>Simple</i>								
VJ10-0S	05B-1	2.5	10.0	31.0	10.0	M10	35.0	JB10
VJ10-1S	06B-1	5.0	10.0	31.0	10.0	M10	35.0	JB10
VJ30-2S	08B-1	7.0	14.0	35.0	10.0	M10	35.0	JB30
VJ30-3S	10B-1	9.0	16.5	36.0	8.0	M10	45.0	JB30
VJ30-4S	12B-1	11.0	17.5	41.0	12.0	M10	45.0	JB30
VJ40-4S	12B-1	11.0	17.5	41.0	12.0	M10	45.0	JB40
VJ40-5S	16B-1	16.0	18.0	41.0	12.0	M10	55.0	JB40
<i>Duplex</i>								
VJ10-1D	06B-2	5.0	18.0	37.0	8.0	M10	35.0	JB10
VJ30-2D	08B-2	7.0	20.5	40.0	8.0	M10	35.0	JB30
VJ30-3D	10B-2	9.0	25.0	45.0	8.0	M10	45.0	JB30
VJ30-4D	12B-2	11.0	30.0	50.0	8.0	M10	45.0	JB30
VJ40-4D	12B-2	11.0	30.0	50.0	8.0	M10	45.0	JB40
<i>Triplex</i>								
VJ30-2T	08B-3	7.0	34.0	56.0	10.0	M10	35.0	JB30

