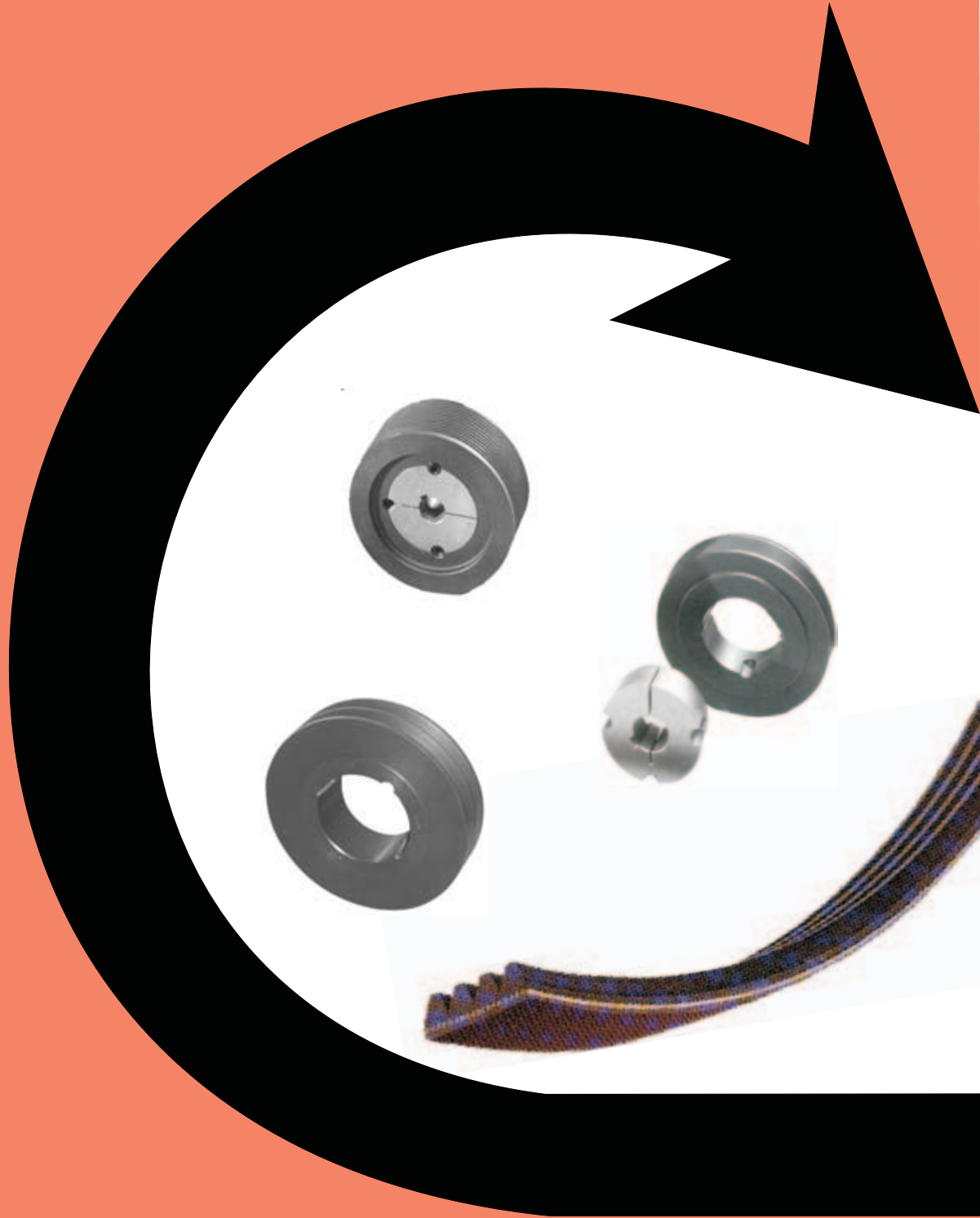


POLY V PULLEYS, V-PULLEYS & BELTS



POWER TRANSMISSION - PNEUMATIC CYLINDERS

2004

INDEX

POLY V PULLEY & BELT DRIVES Page 3

 ‘J’ SECTION POLY V PULLEYS..... Page 4 - 7

 ‘L’ SECTION POLY V PULLEYS Page 8 - 10

 POLY V BELTS..... Page 11 - 12

V-PULLEY & BELT DRIVES..... Page 13

 SPA TAPER BORE V-PULLEYS..... Page 14 - 18

 SPB TAPER BORE V-PULLEYS..... Page 19 - 24

 SPC TAPER BORE V-PULLEYS..... Page 25 - 29

 SPZ TAPER BORE V-PULLEYS Page 30 - 33

 ‘A’ SECTION POWERFLEX V-BELTS..... Page 34

 ‘B’ SECTION POWERFLEX V-BELTS..... Page 35

 ‘C’ & ‘D’ SECTION POWERFLEX V-BELTS..... Page 36

 ‘M’ SECTION POWERFLEX V-BELTS..... Page 37

 ‘SPA’ & ‘SPB’ SECTION POWERFLEX V-BELTS..... Page 38

 ‘SPC’ & ‘SPZ’ SECTION POWERFLEX V-BELTS..... Page 39

 NU-T-LINK & SUPER T-LINK OPEN END V-BELTING..... Page 40

 RED-GO HOLLOW ROUND BELTING..... Page 40

TAPER BUSHES Page 41

USEFUL INFORMATION..... Page 42

NOTES..... Page 43



All dimensions in mm unless otherwise stated

All descriptions and dimensions as published are believed to be correct, but subject to the possibility of printing errors. The right is reserved by us or our suppliers to alter or modify dimensions or designs without notice.



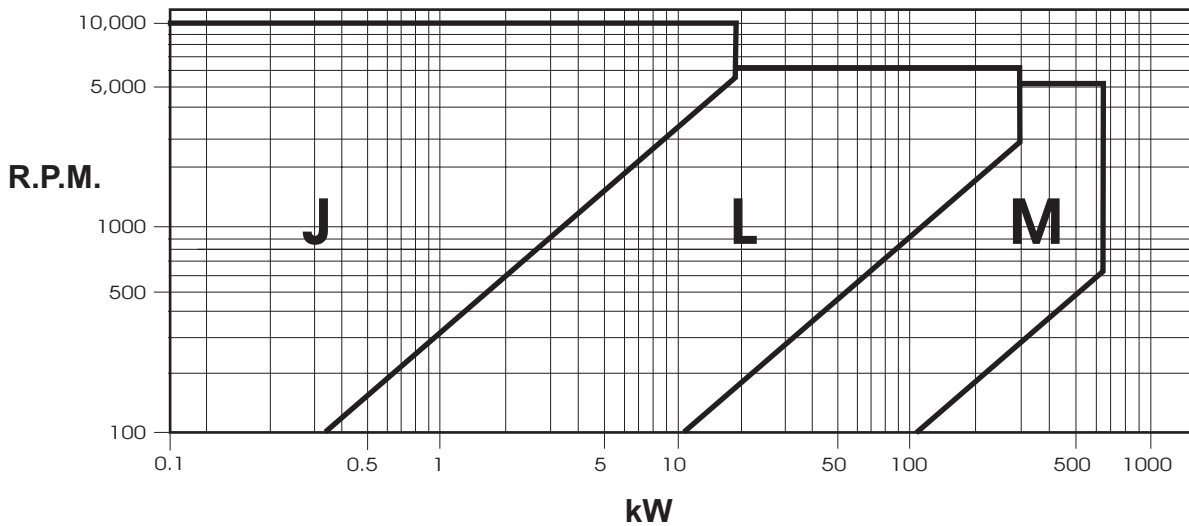
Poly V Pulleys & Belt Drives



Poly-V is a multi rib belt drive whose special construction allows it to be used with very small pulley diameters, reducing noise and vibrations. It solves many drive problems in a number of applications such as machine tools, wood working machines, fitness machines, compressors, fans etc. SIT pulleys have been designed to guarantee optimal drive performances and life. High ratio or high torque drives. With only 1 belt, tensioning is easy and you do not have to worry about matching belts. For further information or help in selecting a drive contact Naismith Engineering.

Characteristics:

- Suitable for transmitting power up to approx. 650 kW
- Wide range of section for every drive requirement: J , L & M
- Suitable for small size pulleys diameter (20 mm), achieving very high peripheral speed (up to 60 m/s)
- The belt can counter flex and work on the backside
- Wide range of pulleys for taper bush available from stock



Sizing up a Pulley

Sizing up a Belt

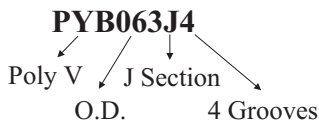
To size up a Poly V pulley the following information must be known:

Bore: Naismith Engineering carries small diameter pulleys in pilot bore and the larger diameters in taper bore.

Pitch: This is the distance from the centre of one groove to the centre of the next groove. Naismith Engineering stock the pitch sizes of 'J' and 'L'.

Grooves: Number of Grooves

O.D.: The outside diameter of the pulley

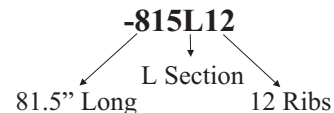


To size up a Poly V belt the following information must be known:

Pitch: This is the distance from the centre of one groove to the centre of the next groove. Naismith Engineering stock the pitch sizes of 'J' , 'L' & 'M'.

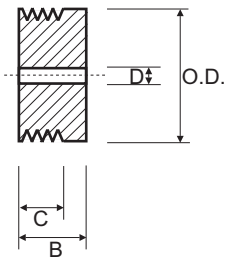
Grooves: Number of Grooves

Pitch Length: The pitch length of the belt expressed in inches.

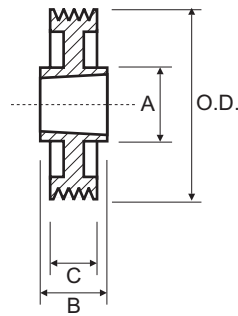


'J' Section Poly-V Pulleys 4 Groove

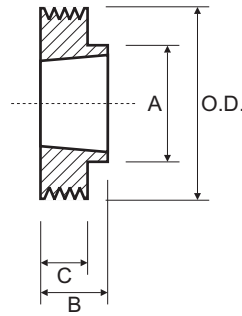
Type 1



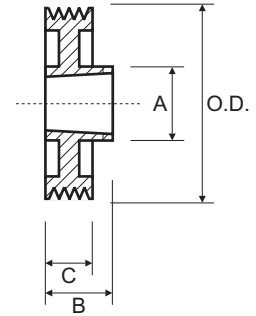
Type 6



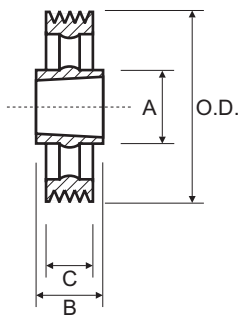
Type 7



Type 8

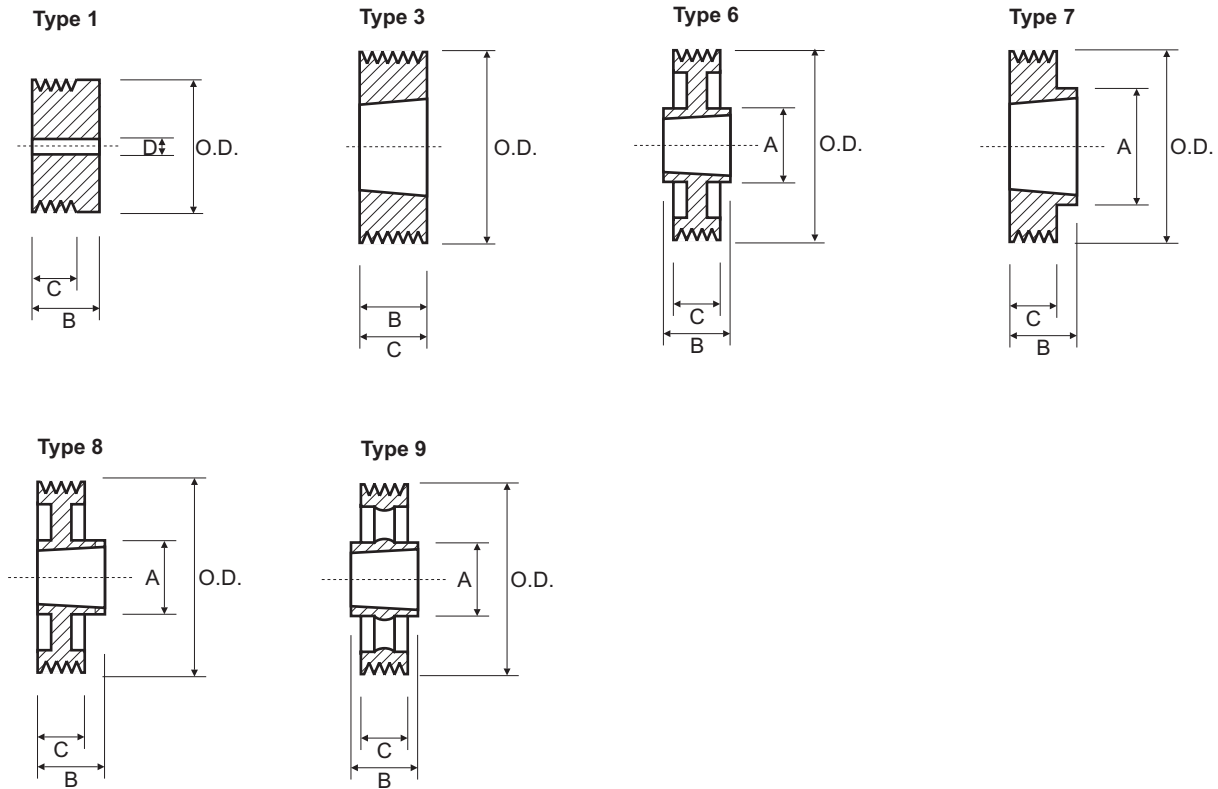


Type 9



4 Groove							4 Groove						
C = 13.5							C = 13.5						
Part No.	O.D.	Type	Bush	A	B	D	Part No.	O.D.	Type	Bush	A	B	D
PYB020J4	20	1	-	-	22.5	5.0	PYB100J4	100	7	1610	82	26.0	-
PYB025J4	25	1	-	-	22.5	5.0	PYB106J4	106	7	1610	88	26.0	-
PYB030J4	30	1	-	-	22.5	9.5	PYB112J4	112	7	1610	90	26.0	-
PYB035J4	35	1	-	-	22.5	9.5	PYB118J4	118	7	1610	90	26.0	-
PYB040J4	40	1	-	-	22.5	12.0	PYB125J4	125	8	1610	90	26.0	-
PYB045J4	45	1	-	-	22.5	12.0	PYB132J4	132	8	1610	90	26.0	-
PYB050J4	50	1	-	-	22.5	12.0	PYB140J4	140	8	1610	90	26.0	-
PYB056J4	56	7	1108	50	23.0	-	PYB160J4	160	8	2012	110	32.0	-
PYB060J4	60	7	1108	50	23.0	-	PYB180J4	180	6	2012	110	32.0	-
PYB063J4	63	7	1108	50	23.0	-	PYB200J4	200	6	2012	110	32.0	-
PYB067J4	67	7	1108	50	23.0	-	PYB224J4	224	6	2012	110	32.0	-
PYB071J4	71	7	1108	60	23.0	-	PYB250J4	250	9	2012	110	32.0	-
PYB075J4	75	7	1108	60	23.0	-	PYB280J4	280	9	2012	110	32.0	-
PYB080J4	80	7	1310	70	26.0	-	PYB315J4	315	9	2012	110	32.0	-
PYB085J4	85	7	1310	70	26.0	-	PYB355J4	355	9	2517	120	45.0	-
PYB090J4	90	7	1610	82	26.0	-	PYB400J4	400	9	2517	120	45.0	-
PYB095J4	95	7	1610	82	26.0	-							

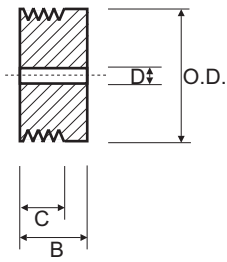
'J' Section Poly-V Pulleys 8 Groove



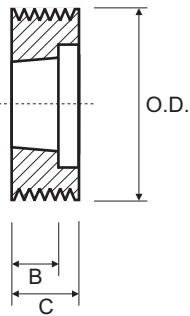
8 Groove								8 Groove							
								C = 23							
Part No.	O.D.	Type	Bush	A	B	D		Part No.	O.D.	Type	Bush	A	B	D	
PYB020J8	20	1	-	-	32	5.0		PYB100J8	100	7	1610	82	26	-	
PYB025J8	25	1	-	-	32	5.0		PYB106J8	106	7	1610	88	26	-	
PYB030J8	30	1	-	-	32	9.5		PYB112J8	112	7	1610	90	26	-	
PYB035J8	35	1	-	-	32	9.5		PYB118J8	118	7	1610	90	26	-	
PYB040J8	40	1	-	-	32	12.0		PYB125J8	125	8	1610	90	26	-	
PYB045J8	45	1	-	-	32	12.0		PYB132J8	132	8	1610	90	26	-	
PYB050J8	50	1	-	-	32	12.0		PYB140J8	140	8	1610	90	26	-	
PYB056J8	56	3	1108	-	23	-		PYB160J8	160	8	2012	110	32	-	
PYB060J8	60	3	1108	-	23	-		PYB180J8	180	6	2012	110	32	-	
PYB063J8	63	3	1108	-	23	-		PYB200J8	200	6	2012	110	32	-	
PYB067J8	67	3	1108	-	23	-		PYB224J8	224	6	2012	110	32	-	
PYB071J8	71	3	1108	-	23	-		PYB250J8	250	9	2012	110	32	-	
PYB075J8	75	3	1108	-	23	-		PYB280J8	280	9	2012	110	32	-	
PYB080J8	80	7	1310	70	26	-		PYB315J8	315	9	2012	110	32	-	
PYB085J8	85	7	1310	70	26	-		PYB355J8	355	9	2517	120	45	-	
PYB090J8	90	7	1610	82	26	-		PYB400J8	400	9	2517	120	45	-	
PYB095J8	95	7	1610	82	26	-									

'J' Section Poly-V Pulleys 12 Groove

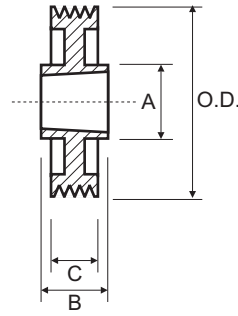
Type 1



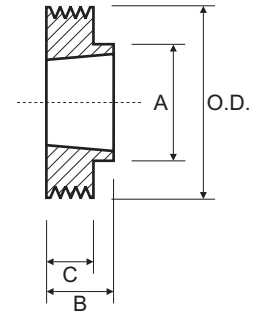
Type 2



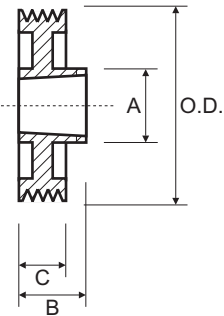
Type 6



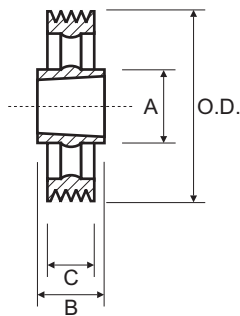
Type 7



Type 8



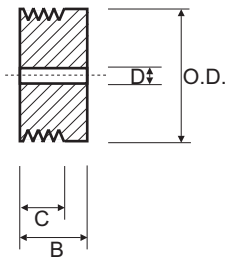
Type 9



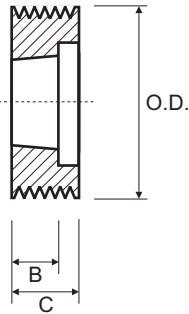
12 Groove							12 Groove						
C = 32.5							C = 32.5						
Part No.	O.D.	Type	Bush	A	B	D	Part No.	O.D.	Type	Bush	A	B	D
PYB020J12	20	1	-	-	41.5	5.0	PYB100J12	100	2	1610	-	26.0	-
PYB025J12	25	1	-	-	41.5	5.0	PYB106J12	106	2	1610	-	26.0	-
PYB030J12	30	1	-	-	41.5	9.5	PYB112J12	112	2	1610	-	26.0	-
PYB035J12	35	1	-	-	41.5	9.5	PYB118J12	118	2	2012	-	32.0	-
PYB040J12	40	1	-	-	41.5	12.0	PYB125J12	125	2	2012	-	32.0	-
PYB045J12	45	1	-	-	41.5	12.0	PYB132J12	132	2	2012	-	32.0	-
PYB050J12	50	1	-	-	41.5	12.0	PYB140J12	140	7	2517	120	45.0	-
PYB056J12	56	1	-	-	41.5	12.0	PYB160J12	160	8	2517	120	45.0	-
PYB060J12	60	2	1108	-	23.0	-	PYB180J12	180	6	2517	120	45.0	-
PYB063J12	63	2	1108	-	23.0	-	PYB200J12	200	6	2517	120	45.0	-
PYB067J12	67	2	1108	-	23.0	-	PYB224J12	224	6	2517	120	45.0	-
PYB071J12	71	2	1108	-	23.0	-	PYB250J12	250	6	2517	120	45.0	-
PYB075J12	75	2	1210	-	26.0	-	PYB280J12	280	9	2517	120	45.0	-
PYB080J12	80	2	1610	-	26.0	-	PYB315J12	315	9	2517	120	45.0	-
PYB085J12	85	2	1610	-	26.0	-	PYB355J12	355	9	2517	120	45.0	-
PYB090J12	90	2	1610	-	26.0	-	PYB400J12	400	9	2517	120	45.0	-
PYB095J12	95	2	1610	-	26.0	-							

'J' Section Poly-V Pulleys 16 Groove

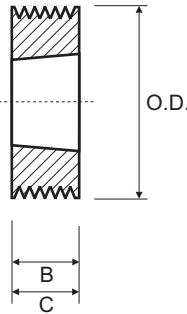
Type 1



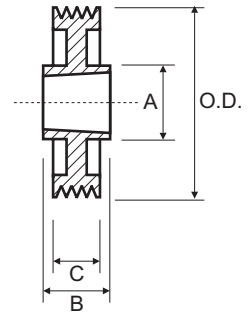
Type 2



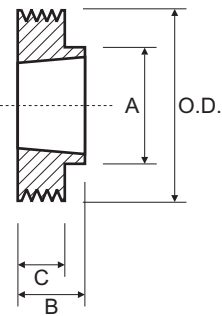
Type 3



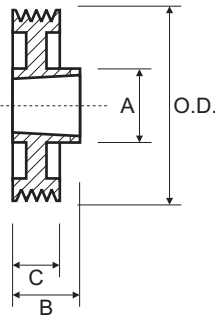
Type 6



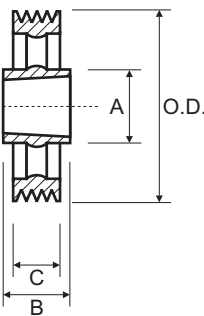
Type 7



Type 8

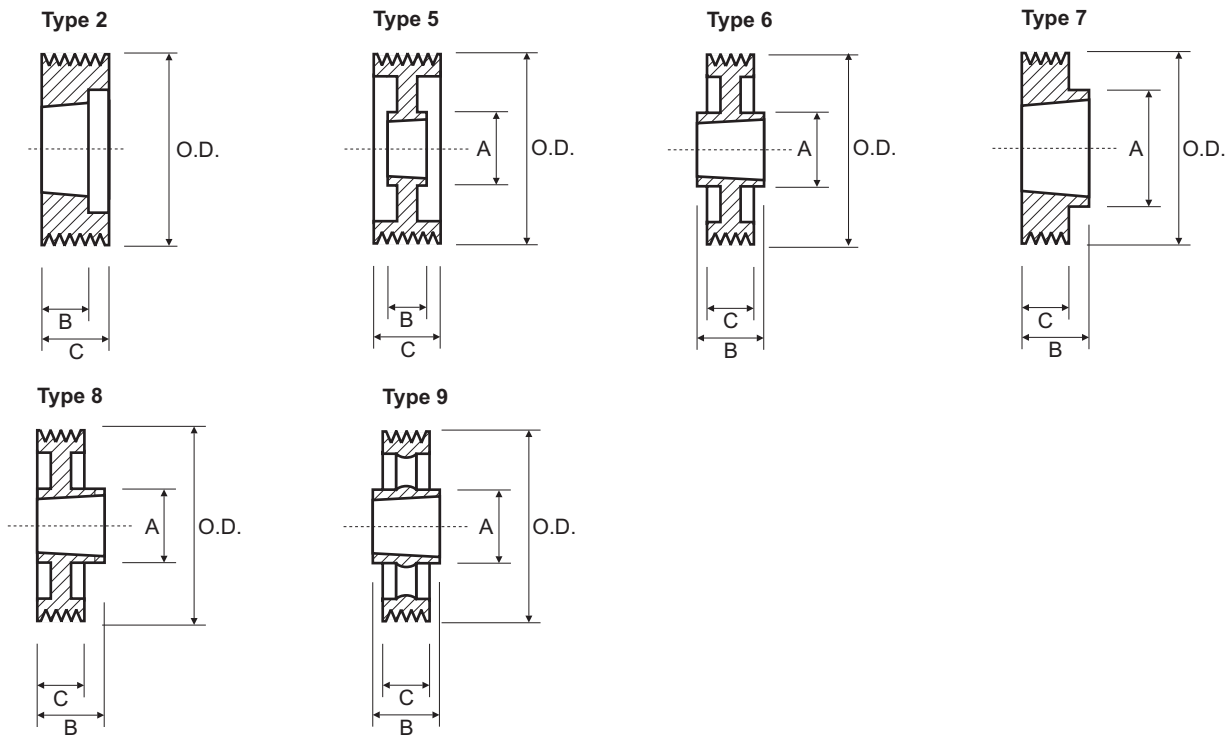


Type 9



16 Groove							16 Groove						
Part No.	O.D.	Type	Bush	A	B	D	Part No.	O.D.	Type	Bush	A	B	D
PYB020J16	20	1	-	-	51.0	5.0	PYB100J16	100	2	1610	-	26.0	-
PYB025J16	25	1	-	-	51.0	5.0	PYB106J16	106	2	1610	-	26.0	-
PYB030J16	30	1	-	-	51.0	9.5	PYB112J16	112	2	1610	-	26.0	-
PYB035J16	35	1	-	-	51.0	9.5	PYB118J16	118	2	2012	-	32.0	-
PYB040J16	40	1	-	-	51.0	12.0	PYB125J16	125	2	2012	-	32.0	-
PYB045J16	45	1	-	-	51.0	12.0	PYB132J16	132	2	2012	-	32.0	-
PYB050J16	50	1	-	-	51.0	12.0	PYB140J16	140	7	2517	120	45.0	-
PYB056J16	56	1	-	-	51.0	12.0	PYB160J16	160	8	2517	120	45.0	-
PYB060J16	60	1	-	-	51.0	12.0	PYB180J16	180	6	2517	120	45.0	-
PYB063J16	63	1	-	-	51.0	12.0	PYB200J16	200	6	2517	120	45.0	-
PYB067J16	67	1	-	-	51.0	12.0	PYB224J16	224	6	2517	120	45.0	-
PYB071J16	71	3	1215	-	42.0	-	PYB250J16	250	6	2517	120	45.0	-
PYB075J16	75	2	1610	-	26.0	-	PYB280J16	280	9	2517	120	45.0	-
PYB080J16	80	2	1610	-	26.0	-	PYB315J16	315	9	2517	120	45.0	-
PYB085J16	85	2	1610	-	26.0	-	PYB355J16	355	9	3020	146	52.0	-
PYB090J16	90	2	1610	-	26.0	-	PYB400J16	400	9	3020	146	52.0	-
PYB095J16	95	2	1610	-	26.0	-							

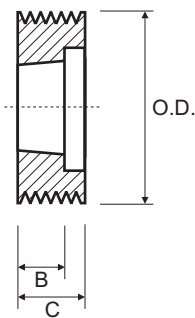
'L' Section Poly-V Pulleys 6 & 8 Groove



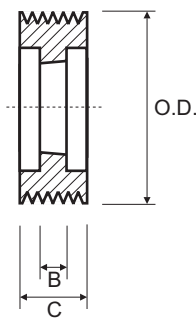
6 Groove						8 Groove					
Part No.	O.D.	Type	Bush	C = 13.5		Part No.	O.D.	Type	Bush	C = 23	
				A	B					A	B
PYB075L6	75	2	1210	-	26	PYB075L8	75	2	1210	-	26
PYB080L6	80	2	1210	-	26	PYB080L8	80	2	1210	-	26
PYB085L6	85	2	1210	-	26	PYB085L8	85	2	1210	-	26
PYB090L6	90	2	1610	-	26	PYB090L8	90	2	1610	-	26
PYB095L6	95	2	1210	-	26	PYB095L8	95	2	1210	-	26
PYB0100L6	100	2	1610	-	26	PYB0100L8	100	2	1610	-	26
PYB0106L6	106	2	1610	-	26	PYB0106L8	106	2	1610	-	26
PYB0112L6	112	2	1610	-	26	PYB0112L8	112	2	1610	-	26
PYB0118L6	118	2	2012	-	32	PYB0118L8	118	2	2012	-	32
PYB0125L6	125	2	2012	-	32	PYB0125L8	125	2	2012	-	32
PYB0132L6	132	2	2012	-	32	PYB0132L8	132	2	2012	-	32
PYB0140L6	140	7	2517	120	45	PYB0140L8	140	2	2517	-	45
PYB0150L6	150	7	2517	120	45	PYB0150L8	150	2	2517	-	45
PYB0160L6	160	7	2517	120	45	PYB0160L8	160	2	2517	-	45
PYB0170L6	170	8	2517	120	45	PYB0170L8	170	2	2517	-	45
PYB0180L6	180	6	2517	120	45	PYB0180L8	180	5	2517	120	45
PYB0190L6	190	6	2517	120	45	PYB0190L8	190	5	2517	120	45
PYB0200L6	200	6	2517	120	45	PYB0200L8	200	5	2517	120	45
PYB0212L6	212	6	2517	120	45	PYB0212L8	212	5	2517	120	45
PYB0224L6	224	6	2517	120	45	PYB0224L8	224	5	2517	120	45
PYB0236L6	236	6	2517	120	45	PYB0236L8	236	5	2517	120	45
PYB0250L6	250	9	2517	120	45	PYB0250L8	250	5	2517	120	45
PYB0280L6	280	6	2517	120	45	PYB0280L8	280	6	3020	146	52
PYB0315L6	315	9	2517	120	45	PYB0315L8	315	9	3020	146	52
PYB0355L6	355	9	3020	146	52	PYB0355L8	355	9	3020	146	52
PYB0400L6	400	9	3020	146	52	PYB0400L8	400	9	3020	146	52

'L' Section Poly-V Pulleys 10 & 12 Groove

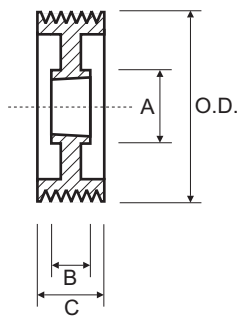
Type 2



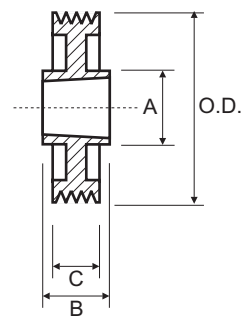
Type 4



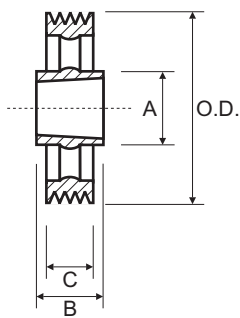
Type 5



Type 6

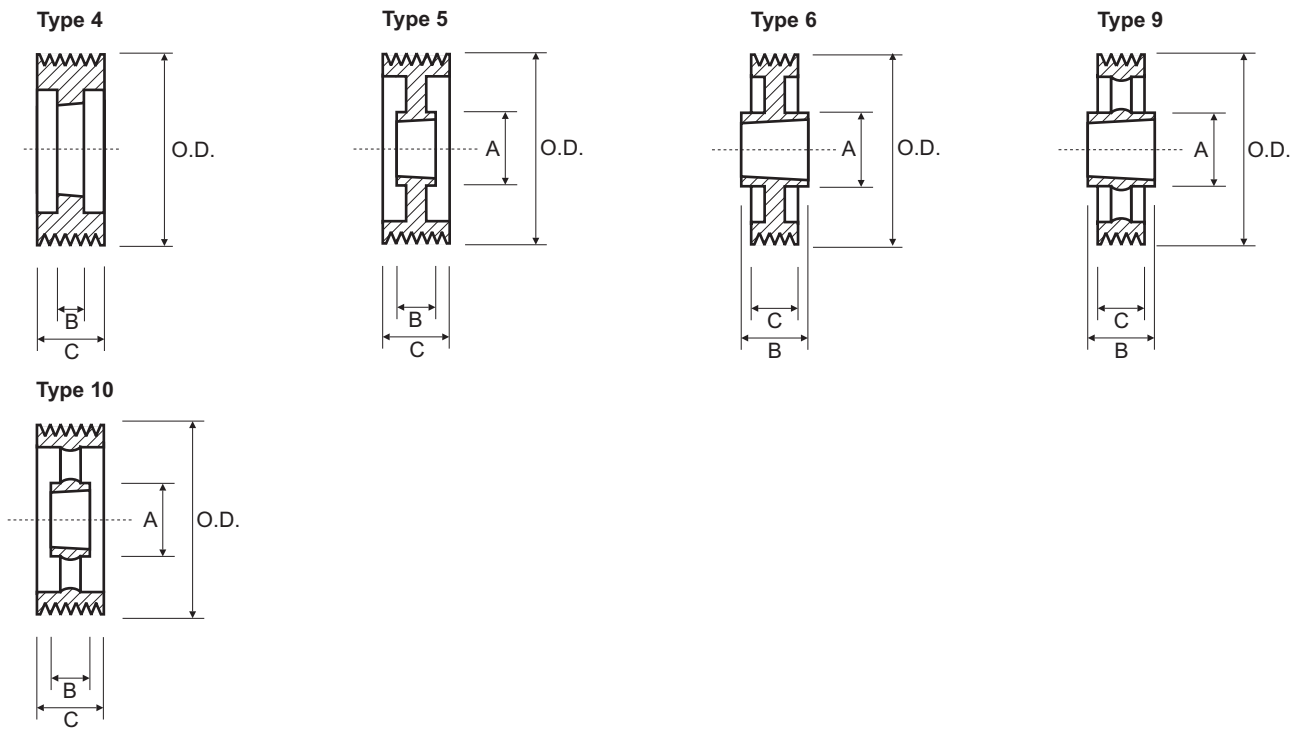


Type 9



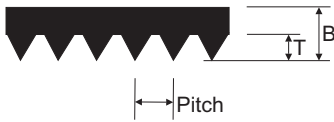
10 Groove						12 Groove					
Part No.	O.D.	Type	Bush	C = 57		Part No.	O.D.	Type	Bush	C = 67	
				A	B					A	B
PYB075L10	75	2	1215	-	42	PYB075L12	75	2	1215	-	42
PYB080L10	80	2	1215	-	42	PYB080L12	80	2	1215	-	42
PYB085L10	85	2	1215	-	42	PYB085L12	85	2	1215	-	42
PYB090L10	90	2	1615	-	42	PYB090L12	90	2	1615	-	42
PYB095L10	95	2	1215	-	42	PYB095L12	95	2	1215	-	42
PYB100L10	100	2	2012	-	32	PYB100L12	100	2	2012	-	32
PYB106L10	106	2	2012	-	32	PYB106L12	106	2	2012	-	32
PYB112L10	112	2	2012	-	32	PYB112L12	112	2	2012	-	32
PYB118L10	118	4	2517	-	45	PYB118L12	118	4	2517	-	45
PYB125L10	125	4	2517	-	45	PYB125L12	125	4	2517	-	45
PYB132L10	132	4	2517	-	45	PYB132L12	132	4	2517	-	45
PYB140L10	140	4	2517	-	45	PYB140L12	140	4	2517	-	45
PYB150L10	150	4	2517	-	45	PYB150L12	150	4	2517	-	45
PYB160L10	160	4	2517	-	45	PYB160L12	160	4	2517	-	45
PYB170L10	170	4	2517	-	45	PYB170L12	170	4	2517	-	45
PYB180L10	180	5	2517	120	45	PYB180L12	180	4	2517	120	45
PYB190L10	190	5	2517	120	45	PYB190L12	190	5	2517	120	45
PYB200L10	200	5	3020	146	52	PYB200L12	200	5	3020	146	52
PYB212L10	212	5	3020	146	52	PYB212L12	212	5	3020	146	52
PYB224L10	224	5	3020	146	52	PYB224L12	224	5	3020	146	52
PYB236L10	236	5	3020	146	52	PYB236L12	236	5	3020	146	52
PYB250L10	250	5	3020	146	52	PYB250L12	250	5	3020	146	52
PYB280L10	280	5	3020	146	52	PYB280L12	280	5	3020	146	52
PYB315L10	315	6	3535	178	89	PYB315L12	315	6	3535	178	89
PYB355L10	355	9	3535	178	89	PYB355L12	355	9	3535	178	89
PYB400L10	400	9	3535	178	89	PYB400L12	400	9	3535	178	89

'L' Section Poly-V Pulleys 16 & 20 Groove



16 Groove						20 Groove					
Part No.	O.D.	Type	Bush	C = 85		Part No.	O.D.	Type	Bush	C = 105	
				A	B					A	B
PYB085L16	85	4	1215	-	42	PYB118L20	118	4	2517	-	45
PYB090L16	90	4	1615	-	42	PYB125L20	125	4	2517	-	45
PYB095L16	95	4	1215	-	42	PYB132L20	132	4	2517	-	45
PYB100L16	100	4	2012	-	32	PYB140L20	140	4	3020	-	52
PYB106L16	106	4	2012	-	32	PYB150L20	150	4	3020	-	52
PYB112L16	112	4	2012	-	32	PYB160L20	160	4	3020	-	52
PYB118L16	118	4	2517	-	45	PYB170L20	170	4	3020	-	52
PYB125L16	125	4	2517	-	45	PYB180L20	180	4	3020	-	52
PYB132L16	132	4	2517	-	45	PYB190L20	190	5	3020	146	52
PYB140L16	140	4	2517	-	45	PYB200L20	200	4	3535	-	89
PYB150L16	150	4	2517	-	45	PYB212L20	212	4	3535	-	89
PYB160L16	160	4	3020	-	52	PYB224L20	224	5	3535	178	89
PYB170L16	170	4	3020	-	52	PYB236L20	236	5	3535	178	89
PYB180L16	180	4	3020	-	52	PYB250L20	250	5	3535	178	89
PYB190L16	190	5	3020	146	52	PYB280L20	280	5	3535	178	89
PYB200L16	200	5	3020	146	52	PYB315L20	315	5	4040	215	102
PYB212L16	212	5	3020	146	52	PYB355L20	355	5	4040	215	102
PYB224L16	224	5	3020	146	52	PYB400L20	400	10	4040	215	102
PYB236L16	236	5	3020	146	52						
PYB250L16	250	5	3020	146	52						
PYB280L16	280	6	3535	178	89						
PYB315L16	315	6	3535	178	89						
PYB355L16	355	9	3535	178	89						
PYB400L16	400	9	3535	178	89						

'J' & 'L' Section Poly-V Belts



	Pitch	Thickness (B)	Height (T)
'J'	2.34mm	3.5mm	1.6mm
'L'	4.7mm	7mm	3.8mm

'J' Section

Stock No.	Length mm	Stock No.	Length mm
-150J	381	-490J	1244
-160J	406	-500J	1270
-170J	432	-520J	1321
-180J	457	-534J	1355
-190J	483	-550J	1397
-200J	508	-562J	1428
-220J	559	-580J	1473
-240J	610	-610J	1549
-260J	660	-650J	1651
-280J	711	-690J	1752
-285J	723	-730J	1854
-300J	762	-752J	1910
-320J	813	-770J	1956
-340J	864	-785J	1992
-360J	914	-820J	2083
-380J	965	-870J	2210
-400J	1016	-920J	2337
-430J	1092	-980J	2489
-435J	1105	Standard widths of:- 4 Ribs 8 Ribs 12 Ribs 16 Ribs Off standard widths are available on request.	
-442J	1123		
-445J	1130		
-453J	1150		
-460J	1168		
-473J	1200		
-480J	1222		

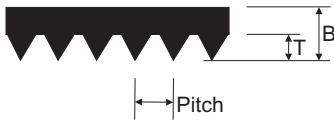
200J8 = 200J (508mm Long), 8 Ribs

'L' Section

Stock No.	Length mm	Stock No.	Length mm
-500L	1270	1120L	2845
-525L	1333	1140L	2895
-540L	1371	1150L	2921
-550L	1397	1180L	2997
-560L	1422	1215L	3086
-615L	1562	1230L	3124
-635L	1613	1295L	3289
-655L	1664	1310L	3327
-675L	1715	1375L	3492
-695L	1764	1455L	3696
-710L	1803	1595L	4051
-725L	1841	1650L	4191
-765L	1943	1760L	4470
-780L	1981	1820L	4622
-795L	2020	1980L	5029
-815L	2070	2120L	5385
-825L	2096	2400L	6096
-840L	2134	Standard widths of:- 6 Ribs 8 Ribs 10 Ribs 12 Ribs 16 Ribs 20 Ribs Off standard widths are available on request.	
-865L	2197		
-880L	2235		
-915L	2324		
-930L	2362		
-975L	2476		
-990L	2515		
1065L	2705		
1080L	2743		

840L16 = 840 (2134mm Long), 16 Ribs

'M' Section Poly-V Belts



	Pitch	Thickness (B)	Height (T)
'M'	9.4mm	12mm	7.3mm

'M' Section

Stock No.	Length mm
-900M	2286
-940M	2388
-990M	2515
1060M	2693
1115M	2832
1150M	2921
1185M	3010
1230M	3124
1310M	3327
1390M	3531
1470M	3734
1610M	4089
1650M	4191
1760M	4470
1830M	4648
1980M	5029
2130M	5410

Stock No.	Length mm
2410M	6121
2710M	6883
3010M	7646
3310M	8408
3610M	9169
3910M	9931
4210M	10693
4810M	12217
5410M	13741
6010M	15266

Standard widths of:-

8 Ribs

12 Ribs

16 Ribs

20 Ribs

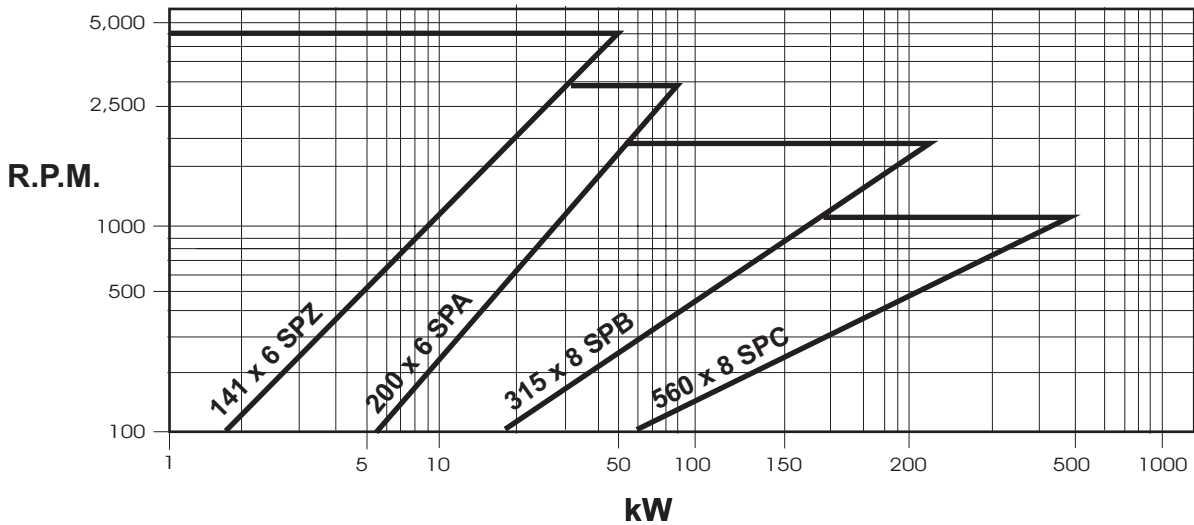
Off standard widths are available on request.

1310M8 = 1310M (3327mm Long), 8 Ribs

V Pulleys & Belt Drives



The Standard V-Belt drives have been around for more than 50 years. It is used in machines through out industry and is one of the most recognised belt drives ever made. The SPA, SPB, SPC & SPZ series are the new and improved version of V-Belt drives. It is capable of greater power than the standard A, B, C & D section thus giving you a more compact drive. For further information or help in selecting a drive contact Naismith Engineering.



Sizing up a Pulley

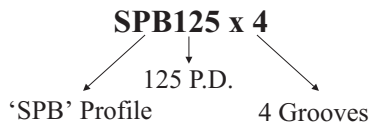
To size up a V-pulley the following information must be known:

Belt Profile: This is worked out by measuring the cross section of the belt and referring to pages 34 to 39.

Naismith Engineering stock the pulley profiles of 'SPA', 'SPB', 'SPC', and 'SPZ'.

Grooves: Number of Grooves

P.D.: The pitch diameter of the pulley



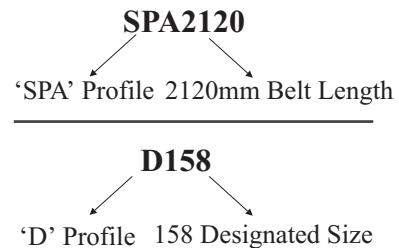
Sizing up a Belt

To size up a V-belt the following information must be known:

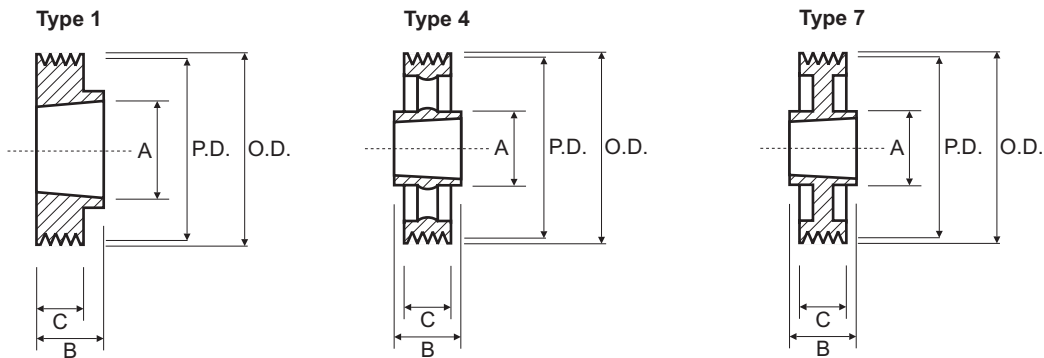
Belt Sizes: This is worked out by measuring the cross section of the belt and referring to pages 34 to 39.

Naismith Engineering stock the belt profiles of 'SPA', 'SPB', 'SPC', 'SPZ', 'A', 'B', 'C', 'D' and 'M'.

Pitch Length: The pitch length of the belt expressed in millimetres for 'SPA', 'SPB', 'SPC' & 'SPZ'. However 'A', 'B', 'C', 'D', and 'M' are purely a size designation.



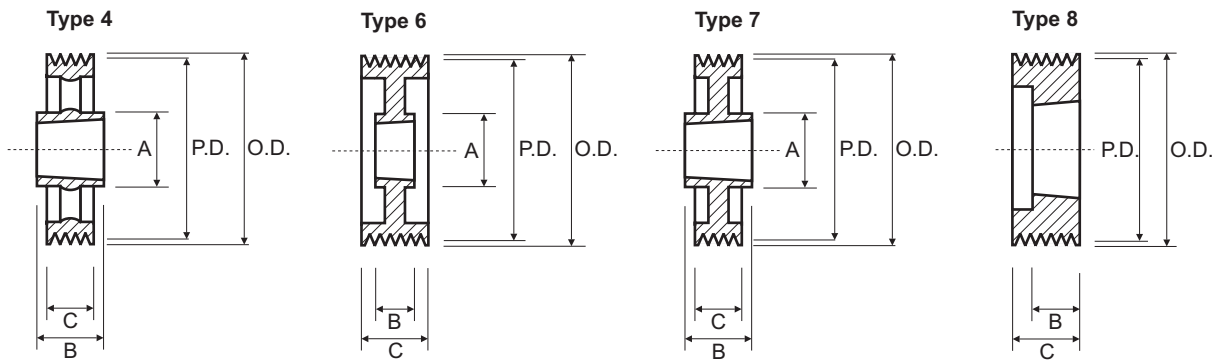
SPA Taper Bore V-Pulleys 1 Groove



1 Groove						1 Groove					
Part No.	O.D.	Type	Bush	C = 20		Part No.	O.D.	Type	Bush	C = 20	
				A	B					A	B
SPA-80mm x 1	85.5	1	1210	75	25	SPA170mm x 1	175.5	1	1610	92	25
SPA-85mm x 1	90.5	1	1210	80	25	SPA180mm x 1	185.5	1	1610	92	25
SPA-90mm x 1	95.5	1	1210	80	25	SPA190mm x 1	195.5	1	1610	92	25
SPA-95mm x 1	100.5	1	1210	85	25	SPA200mm x 1	205.5	7	2012	108	32
SPA 100mm x 1	105.5	1	1610	85	25	SPA224mm x 1	229.5	7	2012	112	32
SPA 106mm x 1	111.5	1	1610	92	25	SPA236mm x 1	241.5	7	2012	112	32
SPA 112mm x 1	117.5	1	1610	92	25	SPA250mm x 1	255.5	7	2012	112	32
SPA 118mm x 1	123.5	1	1610	92	25	SPA280mm x 1	285.5	7	2012	112	32
SPA 125mm x 1	130.5	1	1610	92	25	SPA315mm x 1	320.5	4	2012	112	32
SPA 132mm x 1	137.5	1	1610	92	25	SPA355mm x 1	360.5	4	2012	112	32
SPA 140mm x 1	145.5	1	1610	92	25	SPA400mm x 1	405.5	4	2012	112	32
SPA 150mm x 1	155.5	1	1610	92	25	SPA500mm x 1	505.5	4	2517	124	45
SPA 160mm x 1	165.5	1	1610	92	25						

P.D. = O.D. - 5.5mm

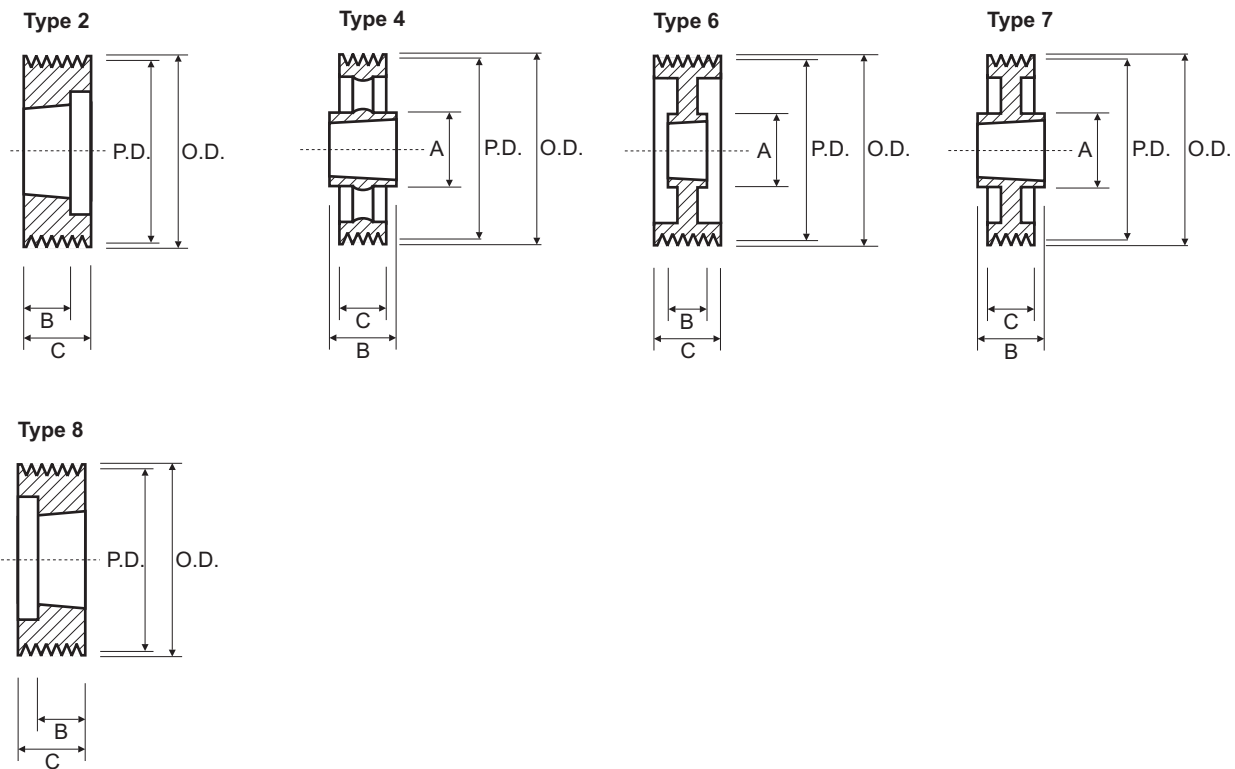
SPA Taper Bore V-Pulleys 2 Groove



2 Groove						2 Groove					
						C = 35					
Part No.	O.D.	Type	Bush	A	B	Part No.	O.D.	Type	Bush	A	B
SPA-80mm x 2	85.5	8	1210	-	25	SPA 170mm x 2	175.5	6	2012	108	32
SPA-85mm x 2	90.5	8	1210	-	25	SPA 180mm x 2	185.5	6	2012	108	32
SPA-90mm x 2	95.5	8	1610	-	25	SPA 190mm x 2	195.5	6	2012	108	32
SPA-95mm x 2	100.5	8	1610	-	25	SPA 200mm x 2	205.5	7	2517	124	45
SPA 100mm x 2	105.5	8	1610	-	25	SPA 224mm x 2	229.5	7	2517	124	45
SPA 106mm x 2	111.5	8	1610	-	25	SPA 236mm x 2	241.5	7	2517	120	45
SPA 112mm x 2	117.5	8	1610	-	25	SPA 250mm x 2	255.5	7	2517	124	45
SPA 118mm x 2	123.5	8	1610	-	25	SPA 280mm x 2	285.5	7	2517	124	45
SPA 125mm x 2	130.5	8	1610	-	25	SPA 315mm x 2	320.5	4	2517	124	45
SPA 132mm x 2	137.5	8	2012	-	32	SPA 355mm x 2	360.5	4	2517	124	45
SPA 140mm x 2	145.5	8	2012	-	32	SPA 400mm x 2	405.5	4	2517	124	45
SPA 150mm x 2	155.5	8	2012	-	32	SPA 500mm x 2	505.5	4	2517	124	45
SPA 160mm x 2	165.5	6	2012	108	32						

P.D. = O.D. - 5.5mm

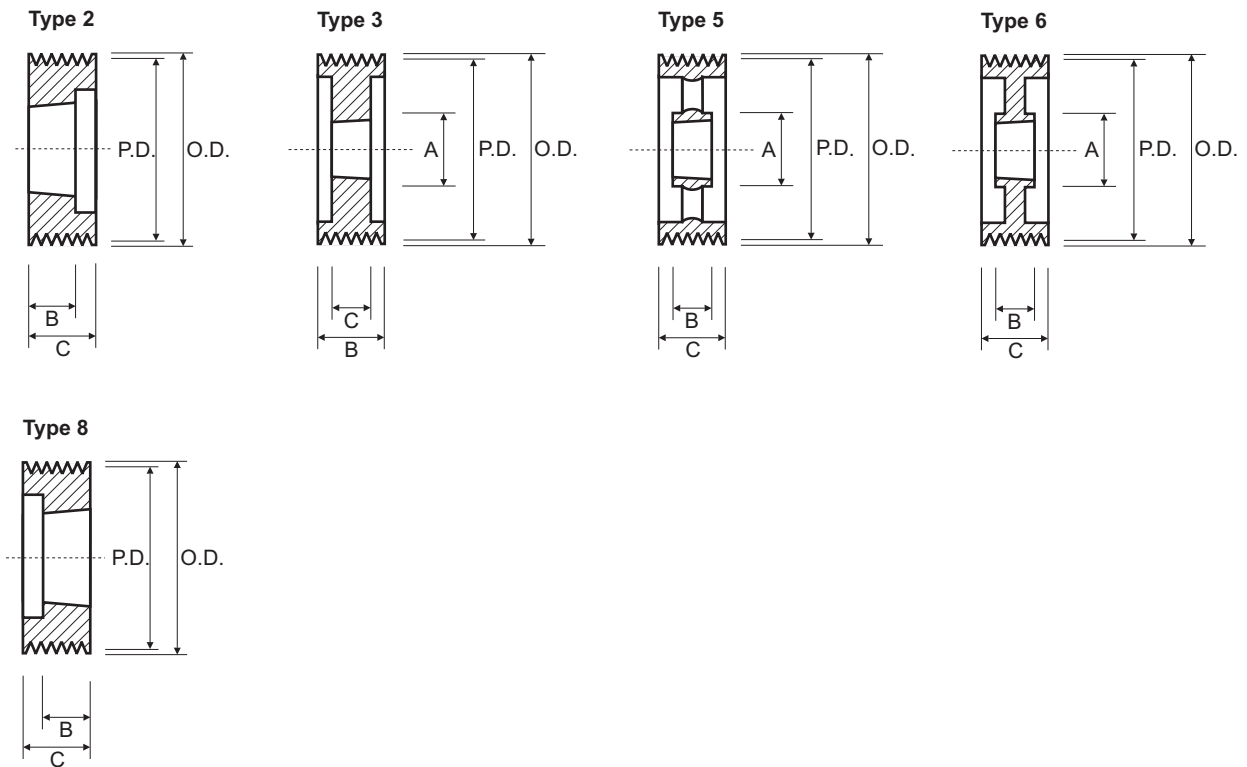
SPA Taper Bore V-Pulleys 3 Groove



3 Groove						3 Groove					
Part No.	O.D.	Type	Bush	C = 50		Part No.	O.D.	Type	Bush	C = 50	
				A	B					A	B
SPA-80mm x 3	85.5	8	1210	-	25	SPA 170mm x 3	175.5	8	2517	-	45
SPA-85mm x 3	90.5	8	1210	-	25	SPA 180mm x 3	185.5	8	2517	-	45
SPA-90mm x 3	95.5	8	1610	-	25	SPA 190mm x 3	195.5	8	2517	-	45
SPA-95mm x 3	100.5	8	1610	-	25	SPA 200mm x 3	205.5	6	2517	123	45
SPA 100mm x 3	105.5	2	1610	-	25	SPA 224mm x 3	229.5	6	2517	124	45
SPA 106mm x 3	111.5	2	1610	-	25	SPA 236mm x 3	241.5	6	2517	120	45
SPA 112mm x 3	117.5	8	2012	-	32	SPA 250mm x 3	255.5	6	2517	124	45
SPA 118mm x 3	123.5	2	2012	-	32	SPA 280mm x 3	285.5	6	2517	124	45
SPA 125mm x 3	130.5	2	2012	-	32	SPA 315mm x 3	320.5	7	3020	159	51
SPA 132mm x 3	137.5	2	2012	-	32	SPA 355mm x 3	360.5	4	3020	159	51
SPA 140mm x 3	145.5	8	2517	-	45	SPA 400mm x 3	405.5	4	3020	159	51
SPA 150mm x 3	155.5	8	2517	-	45	SPA 500mm x 3	505.5	4	3020	159	51
SPA 160mm x 3	165.5	8	2517	-	45						

P.D. = O.D. - 5.5mm

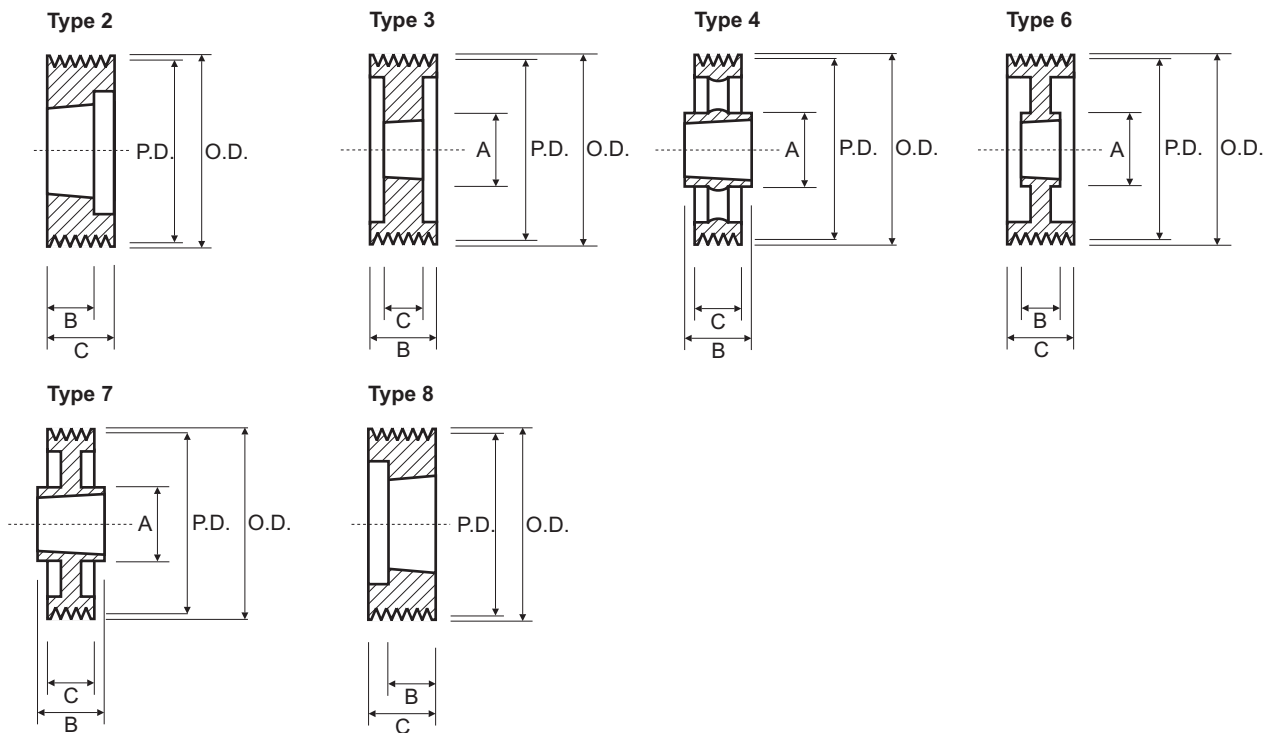
SPA Taper Bore V-Pulleys 4 Groove



4 Groove						4 Groove					
Part No.	O.D.	Type	Bush	C = 65		Part No.	O.D.	Type	Bush	C = 65	
				A	B					A	B
SPA-90mm x 4	95.5	3	1615	-	38	SPA 180mm x 4	185.5	2	2517	-	45
SPA-95mm x 4	100.5	3	1615	-	38	SPA 190mm x 4	195.5	2	2517	-	45
SPA 100mm x 4	105.5	2	1615	-	38	SPA 200mm x 4	205.5	2	3020	-	51
SPA 106mm x 4	111.5	8	2012	-	32	SPA 224mm x 4	229.5	2	3020	-	51
SPA 112mm x 4	117.5	8	2012	-	32	SPA 236mm x 4	241.5	6	3020	147	51
SPA 118mm x 4	123.5	2	2012	-	32	SPA 250mm x 4	255.5	6	3020	159	51
SPA 125mm x 4	130.5	2	2012	-	32	SPA 280mm x 4	285.5	6	3020	159	51
SPA 132mm x 4	137.5	2	2517	-	45	SPA 315mm x 4	320.5	6	3020	159	51
SPA 140mm x 4	145.5	2	2517	-	45	SPA 355mm x 4	360.5	5	3020	159	51
SPA 150mm x 4	155.5	2	2517	-	45	SPA 400mm x 4	405.5	5	3020	159	51
SPA 160mm x 4	165.5	2	2517	-	45	SPA 500mm x 4	505.5	5	3020	159	51
SPA 170mm x 4	175.5	2	2517	-	45						

P.D. = O.D. - 5.5mm

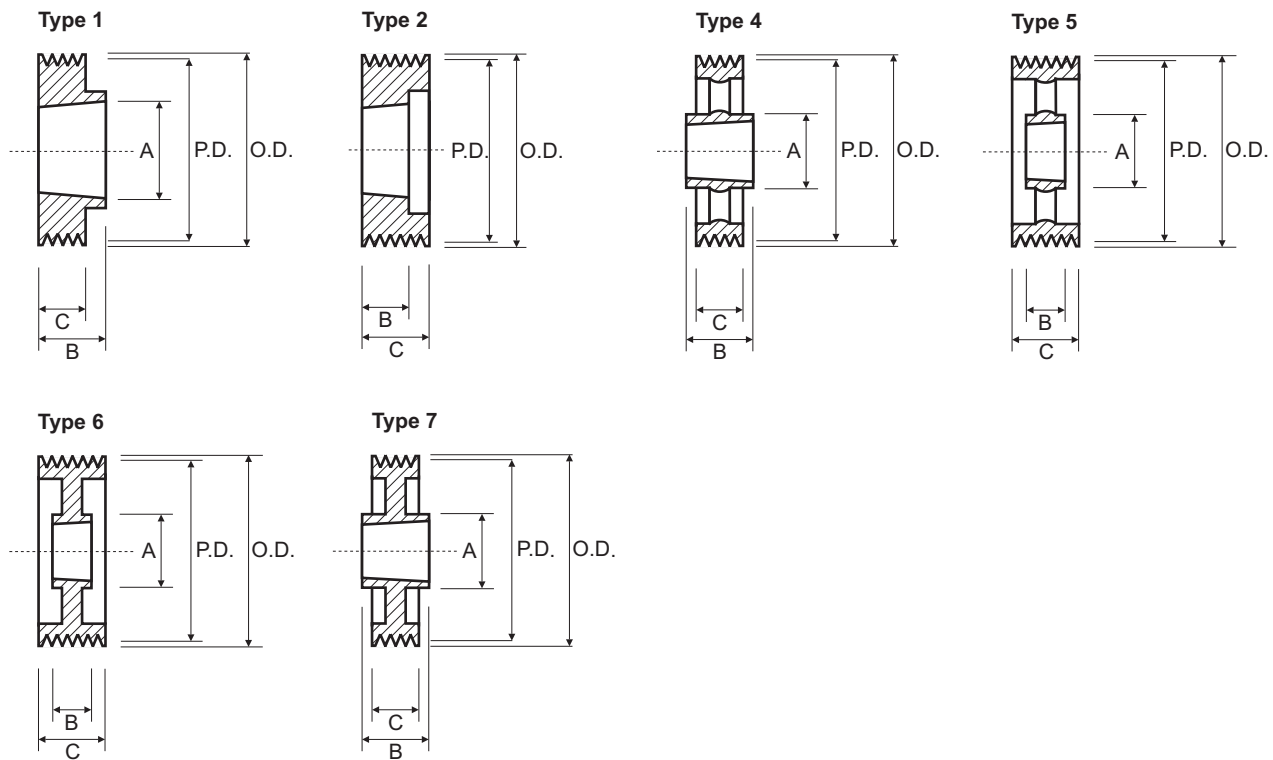
SPA Taper Bore V-Pulleys 5 Groove



5 Groove						5 Groove					
C = 80						C = 80					
Part No.	O.D.	Type	Bush	A	B	Part No.	O.D.	Type	Bush	A	B
SPA 100mm x 5	105.5	2	1615	-	38	SPA 190mm x 5	195.5	3	3020	-	51
SPA 106mm x 5	111.5	8	2012	-	32	SPA 200mm x 5	205.5	3	3020	-	51
SPA 112mm x 5	117.5	8	2012	-	32	SPA 224mm x 5	229.5	8	3020	-	51
SPA 118mm x 5	123.5	2	2012	-	32	SPA 236mm x 5	241.5	6	3020	145	51
SPA 125mm x 5	130.5	3	2012	-	32	SPA 250mm x 5	255.5	6	3020	159	51
SPA 132mm x 5	137.5	3	2517	-	45	SPA 280mm x 5	285.5	7	3535	178	89
SPA 140mm x 5	145.5	3	2517	-	45	SPA 315mm x 5	320.5	4	3535	178	89
SPA 150mm x 5	155.5	3	2517	-	45	SPA 355mm x 5	360.5	4	3535	178	89
SPA 160mm x 5	165.5	3	2517	-	45	SPA 400mm x 5	405.5	4	3535	178	89
SPA 170mm x 5	175.5	3	2517	-	45	SPA 500mm x 5	505.5	4	3535	178	89
SPA 180mm x 5	185.5	3	3020	-	51						

P.D. = O.D. - 5.5mm

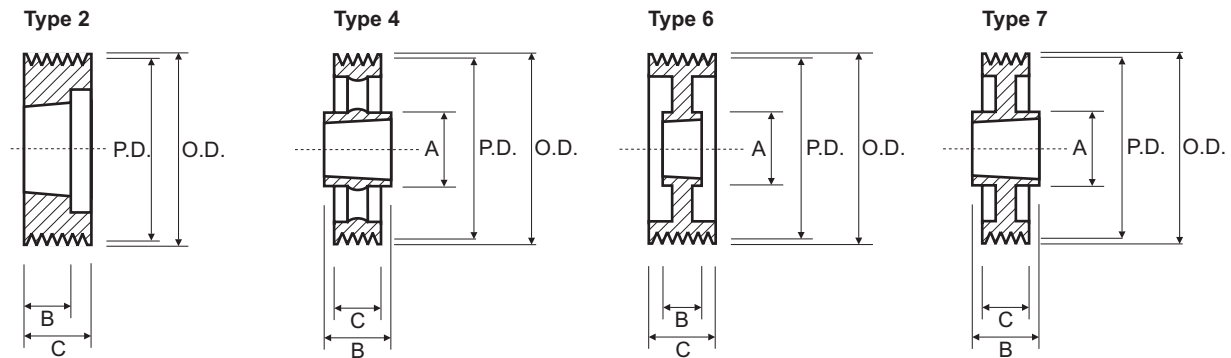
SPB Taper Bore V-Pulleys 2 Groove



2 Groove						2 Groove					
C = 44						C = 44					
Part No.	O.D.	Type	Bush	A	B	Part No.	O.D.	Type	Bush	A	B
SPB125mm x 2	132	2	2012	-	32	SPB236mm x 2	243	7	2517	117	45
SPB132mm x 2	139	2	2012	-	32	SPB250mm x 2	257	7	2517	117	45
SPB140mm x 2	147	2	2012	-	32	SPB280mm x 2	287	7	2517	117	45
SPB150mm x 2	157	2	2012	-	32	SPB300mm x 2	307	6	2517	117	45
SPB160mm x 2	167	2	2012	-	32	SPB315mm x 2	322	7	2517	117	45
SPB170mm x 2	177	2	2012	-	32	SPB355mm x 2	362	5	3020	144	51
SPB180mm x 2	187	1	2517	117	45	SPB400mm x 2	407	4	3020	144	51
SPB190mm x 2	197	1	2517	117	45	SPB450mm x 2	457	4	3020	144	51
SPB200mm x 2	207	1	2517	117	45	SPB500mm x 2	507	4	3020	144	51
SPB212mm x 2	219	1	2517	117	45	SPB560mm x 2	567	4	3030	144	76
SPB224mm x 2	231	7	2517	117	45	SPB630mm x 2	637	4	3030	144	76

P.D. = O.D. - 7mm

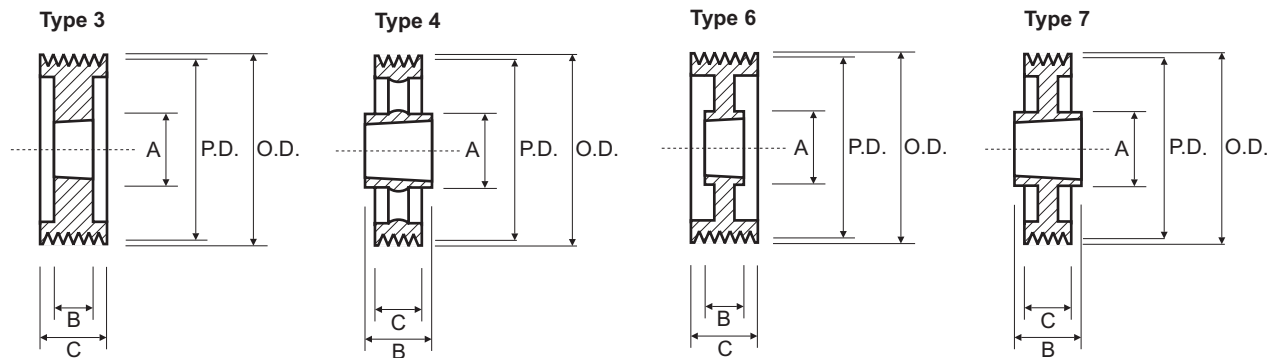
SPB Taper Bore V-Pulleys 3 Groove



3 Groove						3 Groove					
C = 63						C = 63					
Part No.	O.D.	Type	Bush	A	B	Part No.	O.D.	Type	Bush	A	B
SPB125mm x 3	132	2	2012	-	32	SPB280mm x 3	287	6	3020	144	51
SPB132mm x 3	139	2	2012	-	32	SPB300mm x 3	307	6	3020	144	51
SPB140mm x 3	147	2	2012	-	32	SPB315mm x 3	322	6	3020	144	51
SPB150mm x 3	157	2	2517	-	45	SPB355mm x 3	362	7	3020	144	51
SPB160mm x 3	167	2	2517	-	45	SPB400mm x 3	407	7	3535	187	89
SPB170mm x 3	177	2	2517	-	45	SPB450mm x 3	457	4	3535	187	89
SPB180mm x 3	187	2	2517	-	45	SPB500mm x 3	507	4	3535	187	89
SPB190mm x 3	197	2	2517	-	45	SPB560mm x 3	567	4	3535	187	89
SPB200mm x 3	207	6	2517	117	45	SPB630mm x 3	637	4	3535	187	89
SPB212mm x 3	219	6	2517	117	45	SPB800mm x 3	807	4	3535	187	89
SPB224mm x 3	231	6	2517	117	45	SPB1000mm x 3	1007	4	4040	216	102
SPB236mm x 3	243	6	2517	117	45	SPB1250mm x 3	1257	4	4040	216	102
SPB250mm x 3	257	6	3020	144	51						

P.D. = O.D. - 7mm

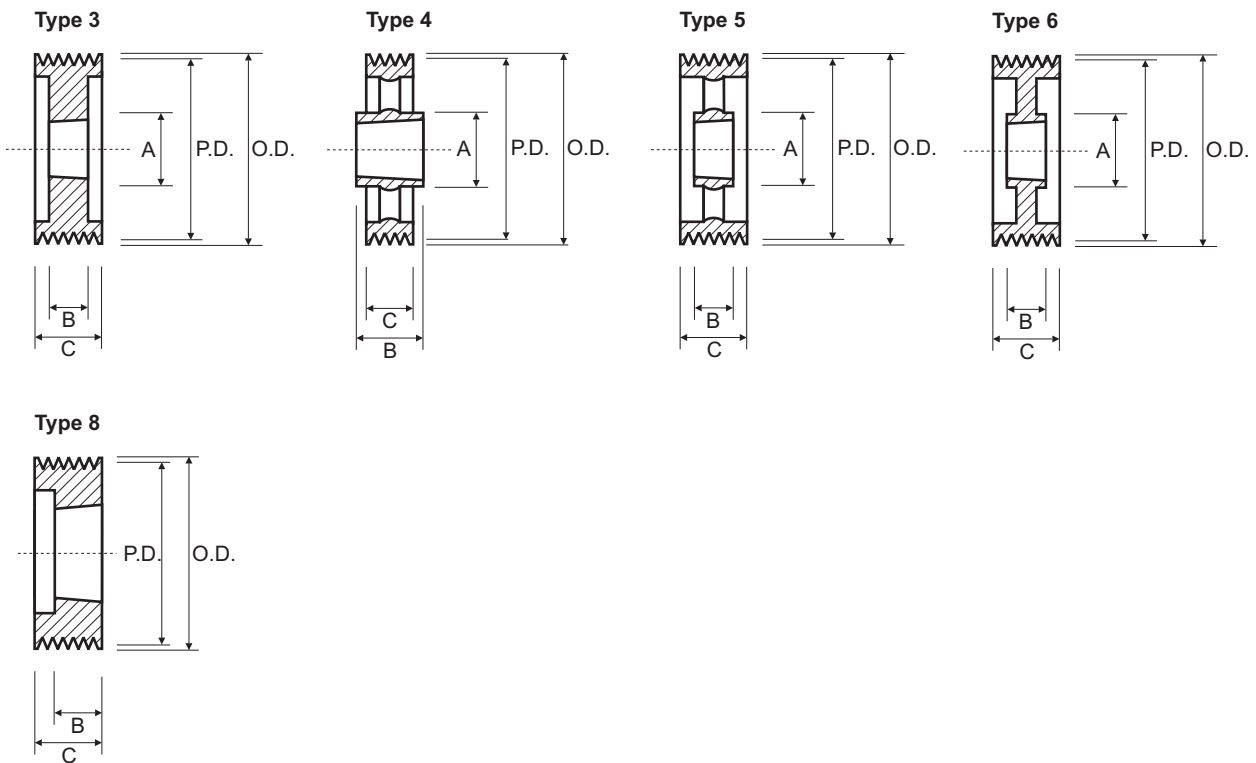
SPB Taper Bore V-Pulleys 4 Groove



4 Groove						4 Groove					
C = 82						C = 82					
Part No.	O.D.	Type	Bush	A	B	Part No.	O.D.	Type	Bush	A	B
SPB125mm x 4	132	3	2012	-	32	SPB280mm x 4	287	6	3020	144	51
SPB132mm x 4	139	3	2012	-	32	SPB300mm x 4	307	6	3020	144	51
SPB140mm x 4	147	3	2517	-	45	SPB315mm x 4	322	6	3535	187	89
SPB150mm x 4	157	3	2517	-	45	SPB355mm x 4	362	7	3535	187	89
SPB160mm x 4	167	3	2517	-	45	SPB400mm x 4	407	4	3535	187	89
SPB170mm x 4	177	3	2517	-	45	SPB450mm x 4	457	4	3535	187	89
SPB180mm x 4	187	3	2517	-	45	SPB500mm x 4	507	4	3535	187	89
SPB190mm x 4	197	3	2517	-	45	SPB560mm x 4	567	4	3535	187	89
SPB200mm x 4	207	3	3020	-	51	SPB630mm x 4	637	4	3535	187	89
SPB212mm x 4	219	3	3020	-	51	SPB800mm x 4	807	4	4040	216	102
SPB224mm x 4	231	3	3020	-	51	SPB1000mm x 4	1007	4	4040	216	102
SPB236mm x 4	243	3	3020	-	51	SPB1250mm x 4	1257	4	4545	242	114
SPB250mm x 4	257	6	3020	144	51						

P.D. = O.D. - 7mm

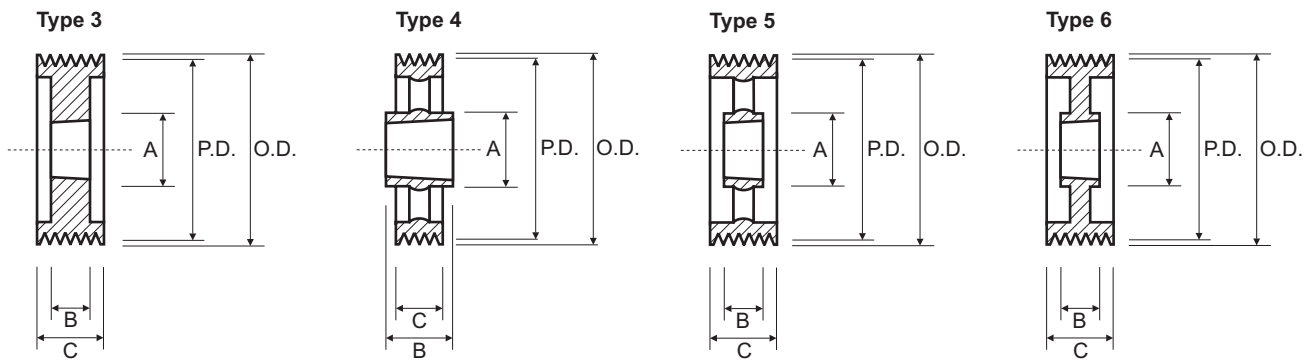
SPB Taper Bore V-Pulleys 5 Groove



5 Groove						5 Groove					
						C = 101					
Part No.	O.D.	Type	Bush	A	B	Part No.	O.D.	Type	Bush	A	B
SPB125mm x5	132	8	2012	-	32	SPB280mm x5	287	6	3535	187	89
SPB132mm x5	139	8	2517	-	45	SPB300mm x5	307	6	3535	187	89
SPB140mm x5	147	3	2517	-	45	SPB315mm x5	322	6	3535	187	89
SPB150mm x5	157	3	2517	-	45	SPB355mm x5	362	5	3535	187	89
SPB160mm x5	167	3	2517	-	45	SPB400mm x5	407	5	3535	187	89
SPB170mm x5	177	3	3020	-	51	SPB450mm x5	457	5	3535	187	89
SPB180mm x5	187	3	3020	-	51	SPB500mm x5	507	5	3535	187	89
SPB190mm x5	197	3	3020	-	51	SPB560mm x5	567	4	4040	216	102
SPB200mm x5	207	3	3020	-	51	SPB630mm x5	637	4	4040	216	102
SPB212mm x5	219	3	3020	-	51	SPB800mm x5	807	4	4040	216	102
SPB224mm x5	231	3	3020	-	51	SPB1000mm x5	1007	4	4545	242	114
SPB236mm x5	243	3	3535	-	89	SPB1250mm x5	1257	4	4545	242	114
SPB250mm x5	257	3	3535	-	89						

P.D. = O.D. - 7mm

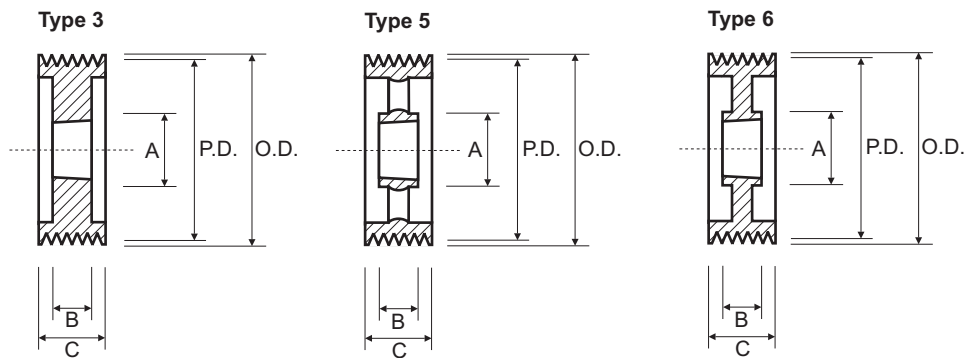
SPB Taper Bore V-Pulleys 6 Groove



6 Groove						6 Groove					
						C = 120					
Part No.	O.D.	Type	Bush	A	B	Part No.	O.D.	Type	Bush	A	B
SPB140mm x6	147	3	2517	-	45	SPB300mm x6	307	6	3535	187	89
SPB150mm x6	157	3	2517	-	45	SPB315mm x6	322	6	3535	187	89
SPB160mm x6	167	3	3020	-	51	SPB355mm x6	362	5	3535	187	89
SPB170mm x6	177	3	3020	-	51	SPB400mm x6	407	5	3535	187	89
SPB180mm x6	187	3	3020	-	51	SPB450mm x6	457	5	4040	216	102
SPB190mm x6	197	3	3020	-	51	SPB500mm x6	507	5	4040	216	102
SPB200mm x6	207	3	3020	-	51	SPB560mm x6	567	5	4040	216	102
SPB212mm x6	219	3	3535	-	89	SPB630mm x6	637	5	4040	216	102
SPB224mm x6	231	3	3535	-	89	SPB800mm x6	807	5	4545	242	114
SPB236mm x6	243	3	3535	-	89	SPB1000mm x6	1007	5	4545	242	114
SPB250mm x6	257	3	3535	-	89	SPB1250mm x6	1257	4	4545	242	114
SPB280mm x6	287	6	3535	187	89						

P.D. = O.D. - 7mm

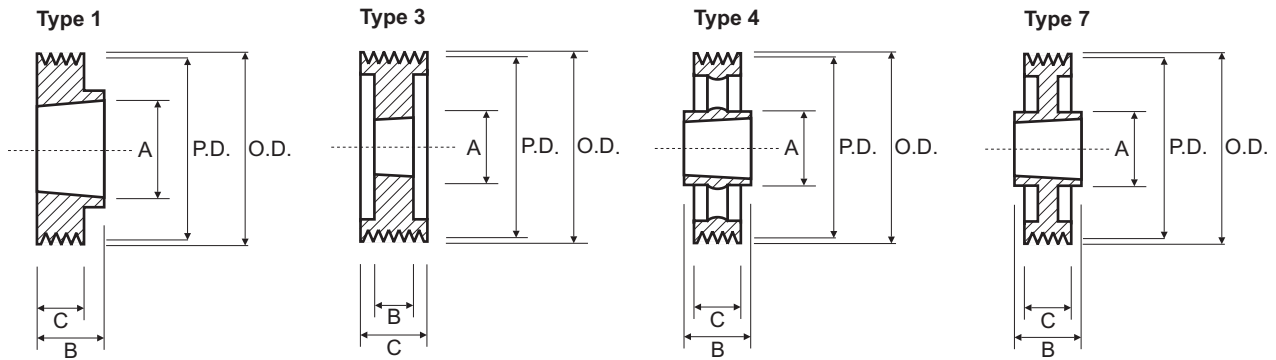
SPB Taper Bore V-Pulleys 8 Groove



8 Groove						8 Groove					
						C = 158					
Part No.	O.D.	Type	Bush	A	B	Part No.	O.D.	Type	Bush	A	B
SPB180mm x 8	187	3	3030	-	76	SPB355mm x 8	362	6	3535	187	89
SPB190mm x 8	197	3	3030	-	76	SPB400mm x 8	407	5	4040	200	102
SPB200mm x 8	207	3	3535	-	89	SPB450mm x 8	457	5	4040	216	102
SPB212mm x 8	219	3	3535	-	89	SPB500mm x 8	507	5	4040	216	102
SPB224mm x 8	231	3	3535	-	89	SPB560mm x 8	567	5	4545	242	114
SPB236mm x 8	243	3	3535	-	89	SPB630mm x 8	637	5	4545	242	114
SPB250mm x 8	257	3	3535	-	89	SPB800mm x 8	807	5	4545	242	114
SPB280mm x 8	287	6	3535	187	89	SPB1000mm x 8	1007	5	5050	267	127
SPB300mm x 8	307	6	3535	187	89	SPB1250mm x 8	1257	5	5050	267	127
SPB315mm x 8	322	6	3535	187	89						

P.D. = O.D. - 7mm

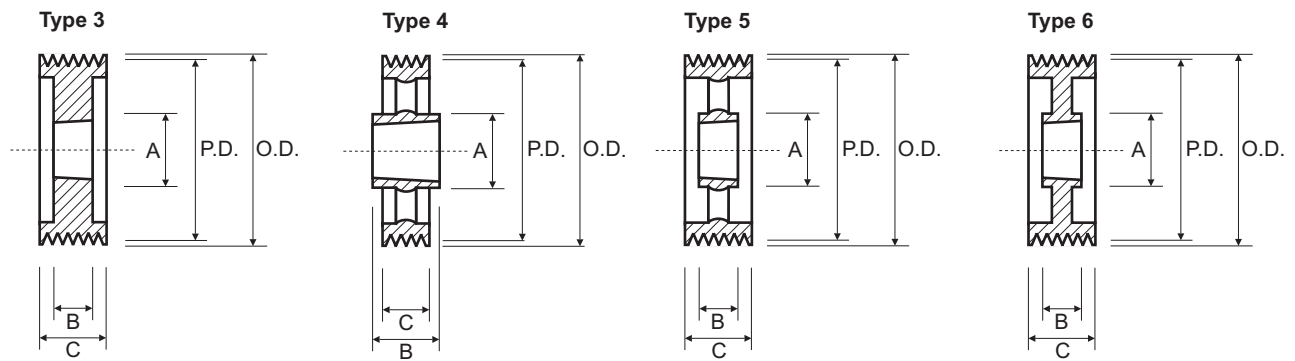
SPC Taper Bore V-Pulleys 3 Groove



3 Groove						3 Groove					
						C = 85					
Part No.	O.D.	Type	Bush	A	B	Part No.	O.D.	Type	Bush	A	B
SPC200mm x 3	209.6	3	2517	-	45	SPC400mm x 3	409.6	4	3535	187	89
SPC212mm x 3	221.6	3	3020	-	51	SPC425mm x 3	434.6	4	3535	187	89
SPC224mm x 3	233.6	3	3020	-	51	SPC450mm x 3	459.6	4	3535	187	89
SPC236mm x 3	245.6	3	3020	-	51	SPC475mm x 3	484.6	4	3535	187	89
SPC250mm x 3	259.6	3	3020	-	51	SPC500mm x 3	509.6	4	3535	187	89
SPC265mm x 3	274.6	1	3535	179	89	SPC530mm x 3	539.6	4	3535	187	89
SPC280mm x 3	289.6	1	3535	187	89	SPC560mm x 3	569.6	4	3535	187	89
SPC300mm x 3	309.6	7	3535	187	89	SPC630mm x 3	639.6	4	4040	216	102
SPC315mm x 3	324.6	7	3535	187	89	SPC800mm x 3	809.6	4	4545	242	114
SPC335mm x 3	344.6	7	3535	187	89	SPC1000mm x 3	1009.6	4	5050	267	127
SPC355mm x 3	364.6	7	3535	187	89	SPC1250mm x 3	1259.6	4	5050	267	127
SPC375mm x 3	384.6	7	3535	187	89						

P.D. = O.D. - 9.6mm

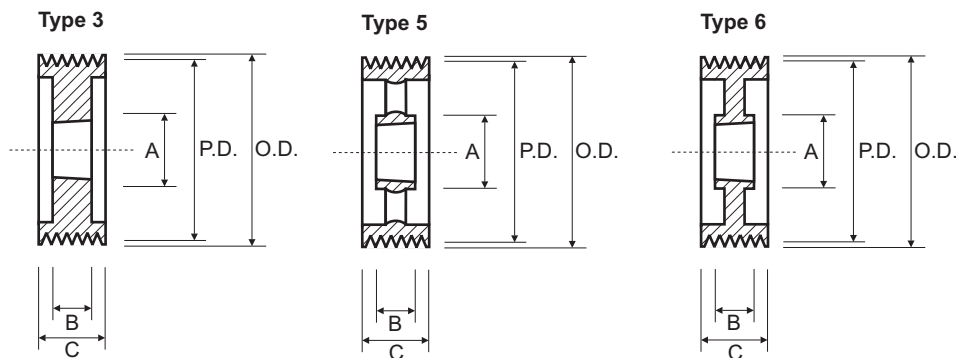
SPC Taper Bore V-Pulleys 4 Grooves



4 Groove						4 Groove					
						C = 111					
Part No.	O.D.	Type	Bush	A	B	Part No.	O.D.	Type	Bush	A	B
SPC200mm x 4	209.6	3	3020	-	51	SPC400mm x 4	409.6	5	3535	187	89
SPC212mm x 4	221.6	3	3020	-	51	SPC425mm x 4	434.6	5	3535	187	89
SPC224mm x 4	233.6	3	3535	-	89	SPC450mm x 4	459.6	5	3535	187	89
SPC236mm x 4	245.6	3	3535	-	89	SPC475mm x 4	484.6	5	3535	187	89
SPC250mm x 4	259.6	3	3535	-	89	SPC500mm x 4	509.6	5	3535	187	89
SPC265mm x 4	274.6	3	3535	-	89	SPC530mm x 4	539.6	5	3535	187	89
SPC280mm x 4	289.6	3	3535	-	89	SPC560mm x 4	569.6	5	4040	216	102
SPC300mm x 4	309.6	6	3535	187	89	SPC630mm x 4	639.6	4	4545	242	114
SPC315mm x 4	324.6	6	3535	187	89	SPC800mm x 4	809.6	4	5050	267	127
SPC335mm x 4	344.6	6	3535	187	89	SPC1000mm x 4	1009.6	4	5050	267	127
SPC355mm x 4	364.6	6	3535	187	89	SPC1250mm x 4	1259.6	4	5050	267	127
SPC375mm x 4	384.6	6	3535	187	89						

P.D. = O.D. - 9.6mm

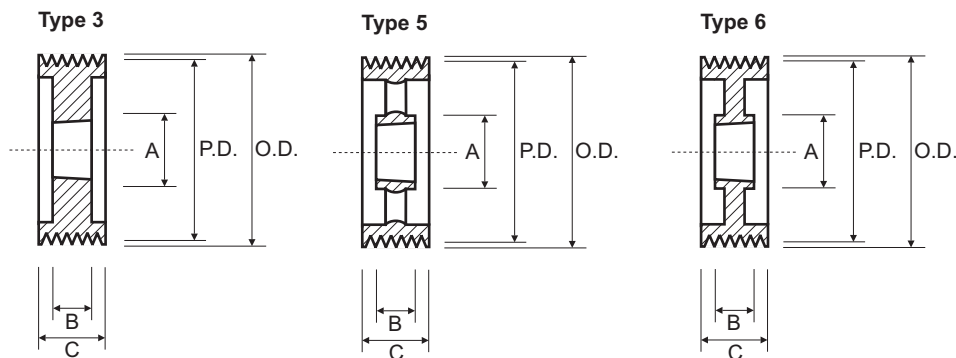
SPC Taper Bore V-Pulleys 5 Groove



5 Groove						5 Groove					
						C = 136					
Part No.	O.D.	Type	Bush	A	B	Part No.	O.D.	Type	Bush	A	B
SPC200mm x 5	209.6	3	3535	-	89	SPC400mm x 5	409.6	5	3535	187	89
SPC212mm x 5	221.6	3	3535	-	89	SPC425mm x 5	434.6	5	4040	216	102
SPC224mm x 5	233.6	3	3535	-	89	SPC450mm x 5	459.6	5	4040	216	102
SPC236mm x 5	245.6	3	3535	-	89	SPC475mm x 5	484.6	5	4040	216	102
SPC250mm x 5	259.6	3	3535	-	89	SPC500mm x 5	509.6	5	4040	216	102
SPC265mm x 5	274.6	3	3535	-	89	SPC530mm x 5	539.6	5	4040	216	102
SPC280mm x 5	289.6	3	3535	-	89	SPC560mm x 5	569.6	5	4545	242	114
SPC300mm x 5	309.6	6	3535	187	89	SPC630mm x 5	639.6	5	5050	267	127
SPC315mm x 5	324.6	6	3535	187	89	SPC800mm x 5	809.6	5	5050	267	127
SPC335mm x 5	344.6	6	3535	187	89	SPC1000mm x 5	1009.6	5	5050	267	127
SPC355mm x 5	364.6	6	3535	187	89	SPC1250mm x 5	1259.6	5	5050	267	127
SPC375mm x 5	384.6	6	3535	187	89						

P.D. = O.D. - 9.6mm

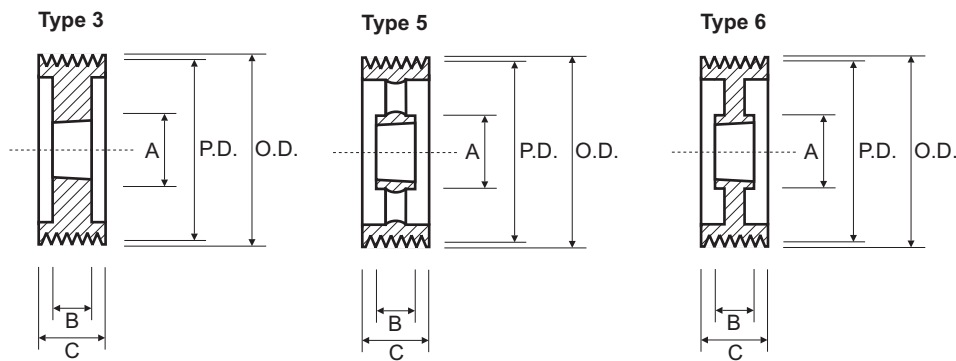
SPC Taper Bore V-Pulleys 6 Grooves



6 Groove						6 Groove					
Part No.	O.D.	Type	Bush	C = 162		Part No.	O.D.	Type	Bush	C = 162	
				A	B					A	B
SPC200mm x 6	209.6	3	3535	-	89	SPC400mm x 6	409.6	6	4040	216	102
SPC212mm x 6	221.6	3	3535	-	89	SPC425mm x 6	434.6	6	4545	242	114
SPC224mm x 6	233.6	3	3535	-	89	SPC450mm x 6	459.6	6	4545	242	114
SPC236mm x 6	245.6	3	3535	-	89	SPC475mm x 6	484.6	6	4545	242	114
SPC250mm x 6	259.6	3	3535	-	89	SPC500mm x 6	509.6	5	4545	242	114
SPC265mm x 6	274.6	3	3535	-	89	SPC530mm x 6	539.6	5	4545	242	114
SPC280mm x 6	289.6	3	3535	-	89	SPC560mm x 6	569.6	5	5050	267	127
SPC300mm x 6	309.6	6	3535	187	89	SPC630mm x 6	639.6	5	5050	267	127
SPC315mm x 6	324.6	6	3535	187	89	SPC800mm x 6	809.6	5	5050	267	127
SPC335mm x 6	344.6	6	3535	187	89	SPC1000mm x 6	1009.6	5	5050	267	127
SPC355mm x 6	364.6	6	3535	187	89	SPC1250mm x 6	1259.6	5	5050	267	127
SPC375mm x 6	384.6	6	4040	216	102						

P.D. = O.D. - 9.6mm

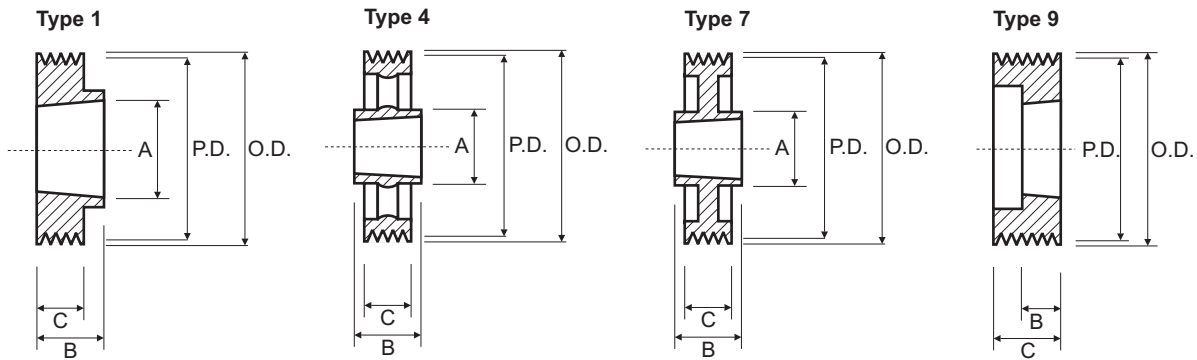
SPC Taper Bore V-Pulleys 8 Grooves



8 Groove						8 Groove					
C = 213						C = 213					
Part No.	O.D.	Type	Bush	A	B	Part No.	O.D.	Type	Bush	A	B
SPC212mm x 8	221.6	3	3535	-	89	SPC400mm x 8	409.6	6	4545	242	114
SPC224mm x 8	233.6	3	3535	-	89	SPC425mm x 8	434.6	6	5050	267	127
SPC236mm x 8	245.6	3	3535	-	89	SPC450mm x 8	459.6	6	5050	267	127
SPC250mm x 8	259.6	3	3535	-	89	SPC475mm x 8	484.6	6	5050	267	127
SPC265mm x 8	274.6	3	3535	-	89	SPC500mm x 8	509.6	6	5050	267	127
SPC280mm x 8	289.6	3	3535	-	89	SPC530mm x 8	539.6	6	5050	267	127
SPC300mm x 8	309.6	6	4040	216	102	SPC560mm x 8	569.6	5	5050	267	127
SPC315mm x 8	324.6	6	4040	216	102	SPC630mm x 8	639.6	5	5050	267	127
SPC335mm x 8	344.6	6	4040	216	102	SPC800mm x 8	809.6	5	5050	267	127
SPC355mm x 8	364.6	6	4040	216	102	SPC1000mm x 8	1009.6	5	5050	267	127
SPC375mm x 8	384.6	6	4545	242	114	SPC1250mm x 8	1259.6	5	5050	267	127

P.D. = O.D. - 9.6mm

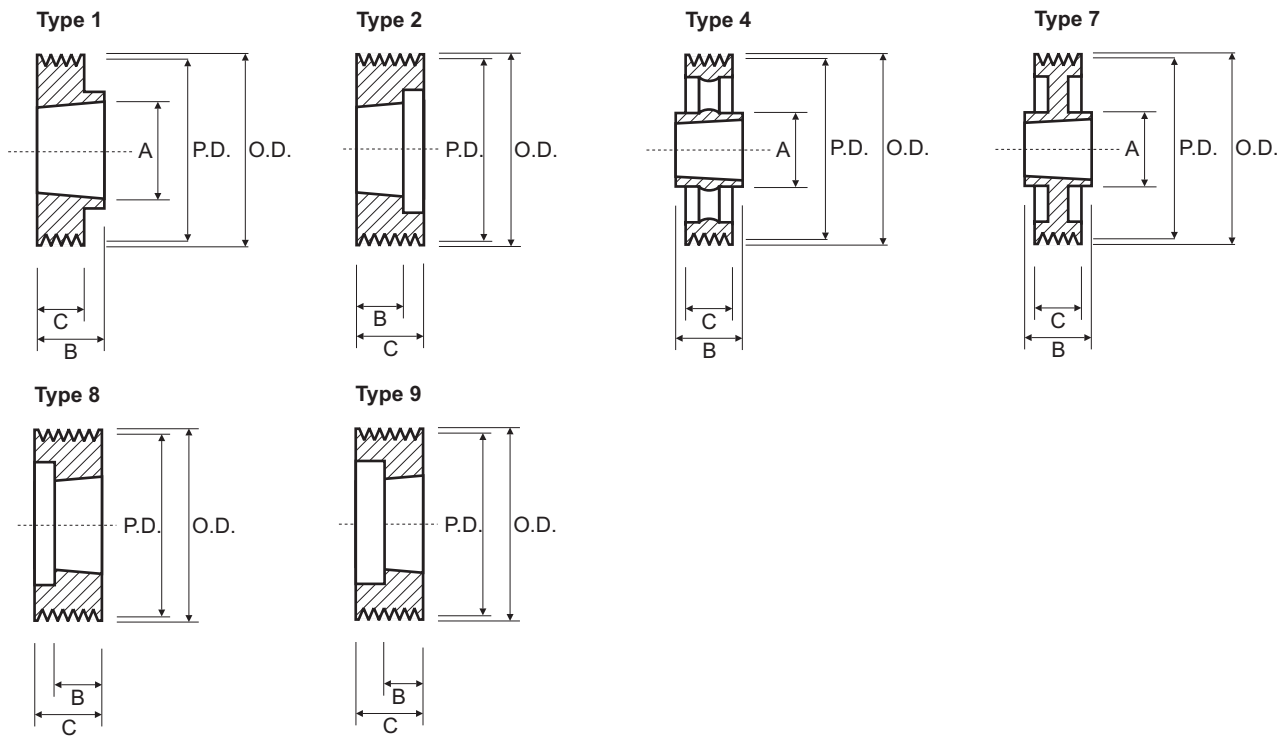
SPZ Taper Bore V-Pulleys 1 Groove



1 Groove						1 Groove					
C = 16						C = 16					
Part No.	O.D.	Type	Bush	A	B	Part No.	O.D.	Type	Bush	A	B
SPZ-56mm x 1	60	1	1008	60	37	SPZ118mm x 1	122	1	1610	92	25
SPZ-60mm x 1	64	1	1008	58	22	SPZ125mm x 1	129	1	1610	92	25
SPZ-63mm x 1	67	1	1108	56	22	SPZ132mm x 1	136	1	1610	92	25
SPZ-67mm x 1	71	1	1108	60	22	SPZ140mm x 1	144	1	1610	92	25
SPZ-71mm x 1	75	1	1108	60	22	SPZ150mm x 1	154	1	1610	92	25
SPZ-75mm x 1	79	1	1108	60	22	SPZ160mm x 1	164	1	1610	92	25
SPZ-80mm x 1	84	1	1210	75	25	SPZ180mm x 1	184	1	1610	92	25
SPZ-85mm x 1	89	1	1210	80	25	SPZ200mm x 1	204	7	2012	112	32
SPZ-90mm x 1	94	1	1210	80	25	SPZ224mm x 1	228	7	2012	112	32
SPZ-95mm x 1	99	1	1210	85	25	SPZ250mm x 1	254	4	2012	112	32
SPZ100mm x 1	104	1	1210	85	25	SPZ280mm x 1	284	4	2012	112	32
SPZ106mm x 1	110	1	1610	92	25	SPZ315mm x 1	319	4	2012	112	32
SPZ112mm x 1	116	1	1610	92	25	SPZ355mm x 1	359	4	2012	112	32

P.D. = O.D. - 4mm

SPZ Taper Bore V-Pulleys 2 Grooves

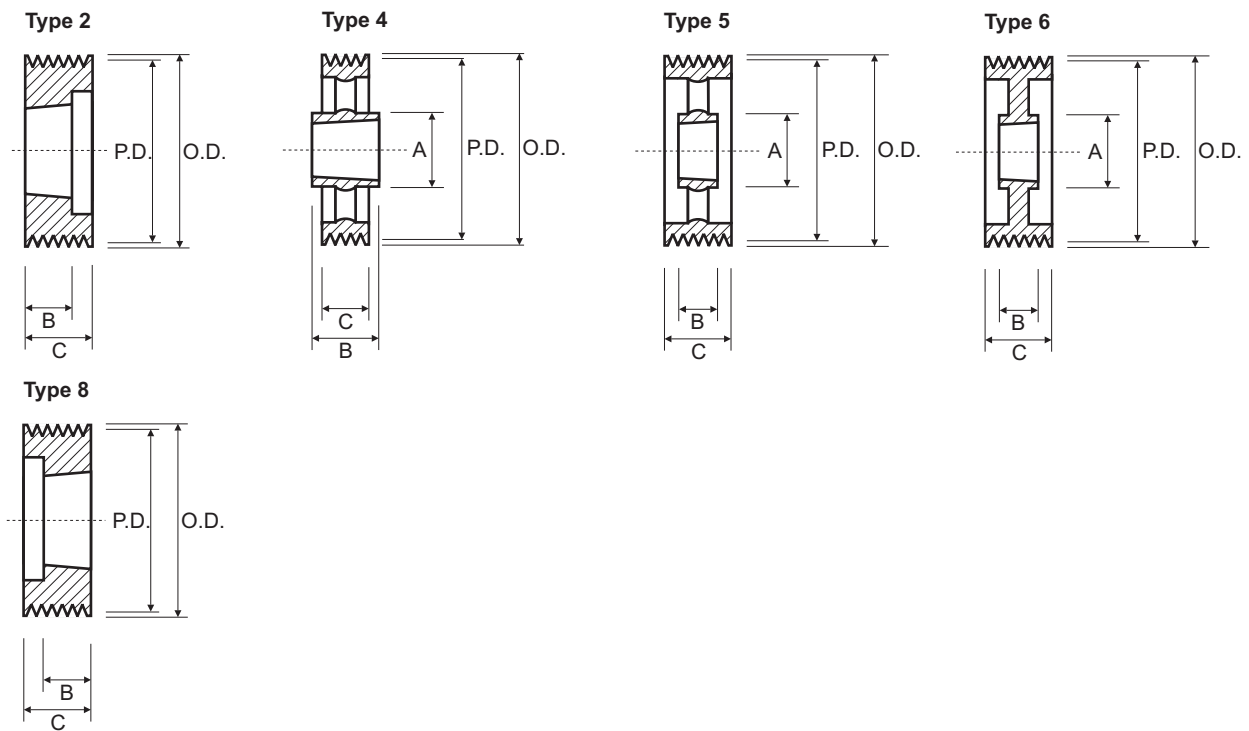


2 Groove							2 Groove					
Part No.	O.D.	Type	Bush	A	B	C	Part No.	O.D.	Type	Bush	A	B
SPZ-56mm x 2	60	9	1108	-	22	49	SPZ118mm x 2	122	8	1610	-	25
SPZ-60mm x 2	64	9	1108	-	22	28	SPZ125mm x 2	129	8	1610	-	25
SPZ-63mm x 2	67	2	1108	-	22	28	SPZ132mm x 2	136	8	1610	-	25
SPZ-67mm x 2	71	8	1108	-	22	28	SPZ140mm x 2	144	8	1610	-	25
SPZ-71mm x 2	75	8	1108	-	22	28	SPZ150mm x 2	154	1	2012	112	32
SPZ-75mm x 2	79	8	1210	-	25	28	SPZ160mm x 2	164	1	2012	112	32
SPZ-80mm x 2	84	8	1210	-	25	28	SPZ180mm x 2	184	1	2012	112	32
SPZ-85mm x 2	89	8	1610	-	25	28	SPZ200mm x 2	204	7	2012	112	32
SPZ-90mm x 2	94	8	1610	-	25	28	SPZ224mm x 2	228	7	2012	112	32
SPZ-95mm x 2	99	8	1610	-	25	28	SPZ250mm x 2	254	4	2012	112	32
SPZ100mm x 2	104	8	1610	-	25	28	SPZ280mm x 2	284	4	2012	112	32
SPZ106mm x 2	110	8	1610	-	25	28	SPZ315mm x 2	319	4	2012	112	32
SPZ112mm x 2	116	8	1610	-	25	28	SPZ355mm x 2	359	4	2012	112	32

C = 28

P.D. = O.D. - 4mm

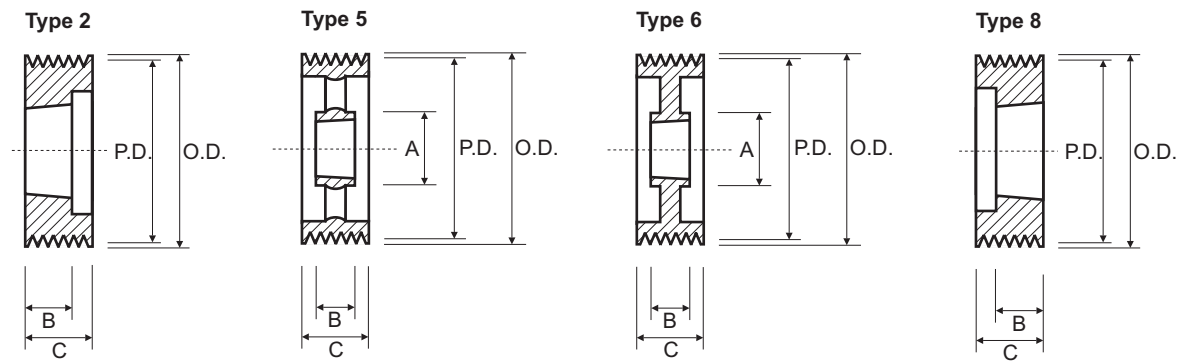
SPZ Taper Bore V-Pulleys 3 Groove



3 Groove						3 Groove					
						C = 40					
Part No.	O.D.	Type	Bush	A	B	Part No.	O.D.	Type	Bush	A	B
SPZ-63mm x 3	67	2	1108	-	22	SPZ125mm x 3	129	2	2012	-	32
SPZ-67mm x 3	71	8	1108	-	22	SPZ132mm x 3	136	2	2012	-	32
SPZ-71mm x 3	75	8	1108	-	22	SPZ140mm x 3	144	2	2012	-	32
SPZ-75mm x 3	79	8	1210	-	25	SPZ150mm x 3	154	2	2012	-	32
SPZ-80mm x 3	84	8	1210	-	25	SPZ160mm x 3	164	2	2012	-	32
SPZ-85mm x 3	89	8	1610	-	25	SPZ180mm x 3	184	2	2012	-	32
SPZ-90mm x 3	94	8	1610	-	25	SPZ200mm x 3	204	6	2012	112	32
SPZ-95mm x 3	99	8	1610	-	25	SPZ224mm x 3	228	6	2012	112	32
SPZ100mm x 3	104	8	1610	-	25	SPZ250mm x 3	254	5	2012	112	32
SPZ106mm x 3	110	8	1610	-	25	SPZ280mm x 3	284	4	2012	124	45
SPZ112mm x 3	116	8	1610	-	32	SPZ315mm x 3	319	4	2012	124	45
SPZ118mm x 3	122	8	2012	-	32	SPZ355mm x 3	359	4	2517	124	45

P.D. = O.D. - 4mm

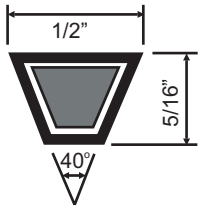
SPZ Taper Bore V-Pulleys 4 Groove



4 Groove						4 Groove					
C = 52						C = 52					
Part No.	O.D.	Type	Bush	A	B	Part No.	O.D.	Type	Bush	A	B
SPZ-80mm x 4	84	8	1210	-	25	SPZ 140mm x 4	144	2	2012	-	32
SPZ-85mm x 4	89	8	1610	-	25	SPZ 150mm x 4	154	2	2517	-	45
SPZ-90mm x 4	94	8	1610	-	25	SPZ 160mm x 4	164	2	2517	-	45
SPZ-95mm x 4	99	8	1610	-	25	SPZ 180mm x 4	184	2	2517	-	45
SPZ100mm x 4	104	8	1610	-	25	SPZ200mm x 4	204	6	2517	124	45
SPZ106mm x 4	110	8	1610	-	25	SPZ224mm x 4	228	6	2517	124	45
SPZ112mm x 4	116	8	2012	-	32	SPZ250mm x 4	254	5	2517	124	45
SPZ118mm x 4	122	8	2012	-	32	SPZ280mm x 4	284	5	2517	124	45
SPZ125mm x 4	129	2	2012	-	32	SPZ315mm x 4	319	5	2517	124	45
SPZ132mm x 4	136	2	2012	-	32	SPZ355mm x 4	359	5	2517	124	45

P.D. = O.D. - 4mm

'A' Section Powerflex V-Belts

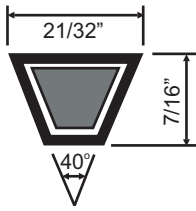


Stock No.	Length mm
A-18	490
A-19	517
A-20	540
A-21	570
A-22	590
A-23	620
A-24	640
A-25	670
A-26	700
A-27	720
A-28	740
A-29	770
A-30	790
A-31	820
A-32	850
A-33	870
A-34	890
A-35	920
A-36	950
A-37	970
A-38	990
A-39	1020
A-40	1050
A-41	1070
A-42	1100
A-43	1130
A-44	1150
A-45	1180
A-46	1200
A-47	1230
A-48	1250
A-49	1280
A-50	1300
A-51	1330
A-52	1360
A-53	1380
A-54	1410
A-55	1430
A-56	1460
A-57	1480
A-58	1510
A-59	1530
A-60	1550

Stock No.	Length mm
A-61	1580
A-62	1610
A-63	1640
A-64	1660
A-65	1690
A-66	1710
A-67	1740
A-68	1750
A-69	1790
A-70	1810
A-71	1840
A-72	1860
A-73	1890
A-74	1920
A-75	1940
A-76	1960
A-77	1990
A-78	2020
A-79	2050
A-80	2070
A-81	2090
A-82	2120
A-83	2140
A-84	2170
A-85	2200
A-86	2220
A-87	2240
A-88	2270
A-89	2300
A-90	2320
A-91	2340
A-92	2370
A-93	2400
A-94	2420
A-95	2450
A-96	2480
A-97	2500
A-98	2520
A-99	2550
A100	2570
A102	2620
A105	2700
A108	2780

Stock No.	Length mm
A110	2830
A112	2880
A115	2950
A116	2980
A120	3080
A124	3190
A127	3210
A128	3290
A132	3330
A134	3480
A136	3590
A140	3690
A144	3750
A150	3840
A154	3940
A158	4040
A173	4430
A175	4480
A197	5040

'B' Section Powerflex V-Belts

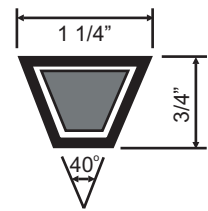
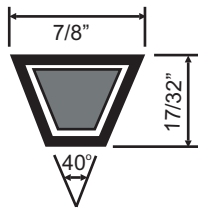


Stock No.	Length mm
B-22	595
B-22.5	610
B-23	625
B-24	650
B-25	680
B-26	700
B-27	730
B-28	750
B-29	770
B-30	800
B-31	830
B-32	850
B-33	880
B-34	910
B-35	930
B-36	960
B-37	980
B-38	1000
B-39	1030
B-40	1060
B-41	1080
B-42	1100
B-43	1130
B-44	1160
B-45	1180
B-46	1210
B-47	1240
B-48	1260
B-49	1290
B-50	1310
B-51	1340
B-52	1370
B-53	1390
B-54	1410
B-55	1440
B-56	1460
B-57	1490
B-58	1510
B-59	1540
B-60	1560
B-61	1590
B-62	1620
B-63	1640
B-64	1670

Stock No.	Length mm
B-65	1690
B-66	1720
B-67	1740
B-68	1760
B-69	1790
B-70	1820
B-71	1850
B-72	1870
B-73	1900
B-74	1920
B-75	1950
B-76	1970
B-77	2000
B-78	2020
B-79	2050
B-80	2070
B-81	2100
B-82	2130
B-83	2150
B-84	2180
B-85	2200
B-86	2220
B-87	2250
B-88	2280
B-89	2300
B-90	2330
B-91	2350
B-92	2370
B-93	2400
B-94	2430
B-95	2460
B-96	2480
B-97	2500
B-98	2530
B-99	2560
B100	2580
B101	2610
B103	2660
B105	2700
B106	2730
B107	2760
B108	2790
B110	2840
B112	2890

Stock No.	Length mm
B114	2940
B115	2960
B116	2990
B117	3010
B118	3030
B120	3090
B124	3200
B126	3240
B128	3290
B131	3370
B132	3390
B136	3500
B140	3600
B144	3700
B146	3750
B152	3900
B158	4060
B162	4160
B166	4260
B168	4310
B173	4430
B180	4610
B184	4710
B187	4790
B193	4950
B195	5000
B204	5220
B210	5370
B240	6140
B270	6900
B276	7025
B300	7660

'C' & 'D' Section Powerflex V-Belts



"C" Section

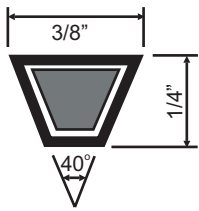
"D" Section

Stock No.	Length mm
C-40	1070
C-42	1120
C-43	1150
C-44	1180
C-45	1200
C-46	1230
C-48	1280
C-51	1350
C-52	1380
C-54	1430
C-55	1450
C-56	1480
C-57	1500
C-59	1560
C-60	1580
C-61	1600
C-63	1650
C-65	1700
C-68	1780
C-70	1830
C-71	1860
C-72	1880
C-74	1930
C-75	1950
C-76	1980
C-78	2040
C-80	2080
C-81	2110
C-83	2160
C-84	2190
C-85	2200
C-87	2260
C-88	2290
C-90	2340
C-92	2390
C-93	2420
C-95	2470
C-96	2490
C-97	2520
C-99	2570
C100	2600
C101	2620
C105	2720
C108	2800

Stock No.	Length mm
C110	2850
C112	2900
C116	3000
C120	3100
C124	3210
C125	3230
C128	3310
C132	3410
C136	3510
C140	3610
C144	3710
C146	3760
C152	3910
C158	4060
C162	4160
C168	4320
C173	4450
C180	4630
C195	5010
C204	5230
C210	5380
C216	5530
C228	5840
C238	6090
C240	6150
C268	6850
C270	6910
C300	7680
C330	8440

Stock No.	Length mm
D101	2640
D120	3130
D128	3330
D158	4080
D162	4190
D173	4470
D180	4650
D195	5030
D210	5400
D240	6170
D250	6420
D270	6940
D300	7690
D360	9220

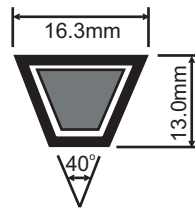
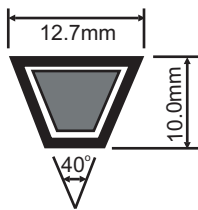
'M' Section Powerflex V-Belts



Stock No.	Length mm
M-9.5	260
M-13.5	370
M-15.5	410
M-17.5	470
M-18	480
M-18.5	495
M-19	508
M-20	530
M-20.5	540
M-21	560
M-21.5	573
M-22	590
M-22.5	603
M-23	610
M-23.5	625
M-24	625
M-25	660
M-26	680
M-26.5	690
M-27	700
M-28	730
M-29	760
M-30	780
M-30.5	800
M-31	810
M-32	840
M-33	860
M-34	890
M-35	920
M-36	940
M-37	960

Stock No.	Length mm
M-38	990
M-39	1010
M-40	1040
M-41	1060
M-42	1080
M-43	1120
M-44	1140
M-45	1170
M-46	1190
M-47	1220
M-48	1240
M-49	1245
M-50	1290
M-51	1320
M-52	1350
M-53	1370
M-54	1400
M-55	1420
M-56	1450
M-57	1475
M-60	1550
M-61	1570
M-63	1630
M-65	1680
M-68	1750
M-75	1930
M-90	2310

'SPA' & 'SPB' Section Powerflex V-Belts



"SPA" Section

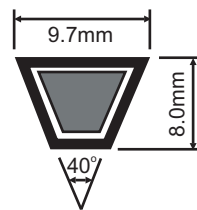
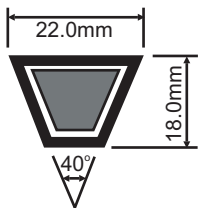
Stock No.	Length mm
SPA-800	800
SPA-850	850
SPA-900	900
SPA-950	950
SPA1000	1000
SPA1060	1060
SPA1120	1120
SPA1180	1180
SPA1250	1250
SPA1320	1320
SPA1360	1360
SPA1400	1400
SPA1500	1500
SPA1600	1600
SPA1700	1700
SPA1800	1800
SPA1900	1900
SPA2000	2000
SPA2120	2120
SPA2240	2240
SPA2360	2360
SPA2500	2500
SPA2650	2650
SPA2800	2800
SPA3000	3000
SPA3150	3150
SPA3350	3350
SPA3550	3550
SPA3750	3750
SPA4000	4000
SPA4250	4250
SPA4500	4500

"SPB" Section

Stock No.	Length mm
SPB1260	1260
SPB1320	1320
SPB1340	1340
SPB1410	1410
SPB1500	1500
SPB1590	1590
SPB1600	1600
SPB1690	1690
SPB1700	1700
SPB1800	1800
SPB1900	1900
SPB2000	2000
SPB2020	2020
SPB2120	2120
SPB2150	2150
SPB2240	2240
SPB2280	2280
SPB2360	2360
SPB2410	2410
SPB2500	2500
SPB2530	2530
SPB2650	2650
SPB2680	2680
SPB2800	2800
SPB2840	2840
SPB2990	2990
SPB3000	3000
SPB3150	3150
SPB3170	3170
SPB3340	3340
SPB3350	3350
SPB3550	3550

Stock No.	Length mm
SPB3750	3750
SPB3800	3800
SPB4000	4000
SPB4060	4060
SPB4250	4250
SPB4310	4310
SPB4560	4560
SPB4750	4750
SPB4820	4820
SPB4840	4840
SPB5070	5070
SPB5300	5300
SPB5380	5380
SPB5680	5680
SPB5990	5990
SPB6340	6340
SPB6700	6700

'SPC' & 'SPZ' Section Powerflex V-Belts



"SPC" Section

Stock No.	Length mm
SPC2000	2000
SPC2120	2120
SPC2240	2240
SPC2360	2360
SPC2500	2500
SPC2650	2650
SPC2800	2800
SPC3000	3000
SPC3150	3150
SPC3350	3350
SPC3550	3550
SPC3750	3750
SPC4000	4000
SPC4250	4250
SPC4500	4500
SPC4750	4750
SPC5000	5000
SPC5300	5300
SPC5600	5600
SPC6000	6000
SPC6300	6300
SPC6700	6700
SPC7100	7100

"SPZ" Section

Stock No.	Length mm
SPZ-630	630
SPZ-670	670
SPZ-710	710
SPZ-760	760
SPZ-800	800
SPZ-850	850
SPZ-875	875
SPZ-900	900
SPZ-940	940
SPZ-950	950
SPZ1000	1000
SPZ1010	1010
SPZ1080	1080
SPZ1140	1140
SPZ1200	1200
SPZ1240	1240
SPZ1250	1250
SPZ1270	1270
SPZ1320	1320
SPZ1340	1340
SPZ1400	1400
SPZ1420	1420
SPZ1470	1470
SPZ1500	1500
SPZ1520	1520
SPZ1560	1560
SPZ1600	1600
SPZ1650	1650
SPZ1700	1700
SPZ1800	1800
SPZ1850	1850
SPZ1900	1900

Stock No.	Length mm
SPZ2000	2000
SPZ2030	2030
SPZ2120	2120
SPZ2160	2160
SPZ2280	2280
SPZ2410	2410
SPZ2540	2540
SPZ2690	2690
SPZ2800	2800
SPZ2840	2840
SPZ2990	2990
SPZ3150	3150
SPZ3170	3170
SPZ3350	3350
SPZ3550	3550

Nu-T-Link & Super T-Link Open End Vee Belting

Stock No.	Size mm
Z/10	10
A/13	13
B/17	17
C/22	22
S/25	25
D/32	32
SPA	SPA
SPB	SPB

Nu-T-Link & Super-T-Link is well established throughout the world as the V-belt that successfully overcomes many of the problems previously associated with standard V-belts. By utilising a composite polyurethane and polyester material Nu-T-Link & Super-T-Link ensures an extended operational life over rubber based V-belts.

Replacing V-belts can often be a complex and time consuming chore. In many cases the drive assembly often needs to be dismantled to gain open access to both pulleys. However with the unique and patented 'T' link construction, the belt can be joined without dismantling the machine.



RED-GO Hollow Round Belting

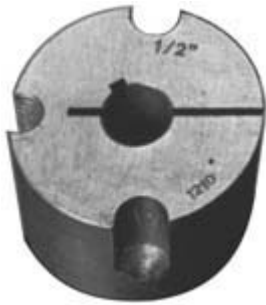
Stock No.	Size mm
REDGO05	5
REDGO06	6
REDGO08	8
REDGO10	10
REDGO13	13

Red-Go Polyurethane belting is ideal for conveying, live rollers and many other drives. It can be made up to any length and is quickly cut to length and installed on the job requiring no special tools.

Available in 5 different sizes 5mm, 6mm, 8mm, 10mm & 13mm



Taper Bushes



Taper bushes are designed to give the following:-

1. Easy assembly.
2. Rapid dismantling of the pulley and other transmission equipment.
3. No special tool requirement except hexagonal allen key.

A large range of bores are available off the shelf which ensures that an immediate assembly can be made, thus avoiding costly factory down-time.

The bushes are machined with standard keyways. This, in addition to clamping screws is sufficient to meet the required torque.

Part No.		Stock Bore Sizes	OD	L
1008	mm	12, 14, 15, 16, 18, 19, 20, 22, 24, 25	35.0	20.3
	inch	3/8", 1/2", 5/8", 3/4", 7/8", 1"		
1108	mm	12, 14, 15, 16, 18, 19, 20, 22, 24, 25, 28	38.0	20.3
	inch	3/8", 1/2", 5/8", 3/4", 7/8", 1", 1 1/8"		
1210	mm	12, 14, 15, 16, 18, 19, 20, 22, 24, 25, 26, 28, 30, 32	47.5	25.4
	inch	1/2", 5/8", 3/4", 7/8", 1", 1 1/8", 1 1/4"		
1215	mm	12, 14, 16, 18, 19, 20, 22, 24, 25, 28, 30, 32	47.5	38.1
	inch	1/2", 5/8", 3/4", 7/8", 1", 1 1/8", 1 1/4"		
1610	mm	12, 14, 15, 16, 18, 19, 20, 22, 24, 25, 28, 30, 32, 35, 38, 40, 42	57.0	25.4
	inch	1/2", 5/8", 3/4", 7/8", 1", 1 1/8", 1 1/4", 1 3/8", 1 5/8"		
1615	mm	12, 14, 16, 18, 19, 20, 22, 24, 25, 28, 30, 32, 35, 38, 40, 42	57.0	38.1
	inch	1/2", 5/8", 3/4", 7/8", 1", 1 1/8", 1 1/4", 1 3/8", 1 1/2", 1 5/8"		
2012	mm	16,19,20,22,24,25,28,30,32,35,38,40,42,45,48,50	70.0	31.8
	inch	3/4", 7/8", 1", 1 1/8", 1 1/4", 1 3/8", 1 1/2", 1 5/8", 1 3/4", 1 7/8", 2"		
* 2017	mm	19, 20, 22, 24, 32, 48	70.0	44.4
	inch	3/4", 13/16", 7/8", 15/16", 1", 1.1/16", 1.1/8", 1.5/16", 1.3/8"		
2517	mm	19, 20, 22, 24, 25, 28, 30, 32, 35, 38, 40, 42, 45, 48, 50, 55, 60	85.5	44.5
	inch	3/4", 7/8", 1", 1 1/8", 1 1/4", 1 3/8", 1 1/2", 1 5/8", 1 3/4", 1 7/8", 2", 2 1/8",		
	inch	2 1/4", 2 3/8", 2 1/2"		
* 2525	mm	19, 20, 22, 28	85.6	63.5
	inch	3/4", 7/8", 1", 1 1/8"		
3020	mm	32, 35, 38, 40, 42, 45, 48, 50, 55, 60, 65, 70, 75	108.0	50.8
	inch	1 1/4", 1 3/8", 1 1/2", 1 5/8", 1 3/4", 1 7/8", 2", 2 1/8", 2 1/4", 2 3/8", 2 1/2", 2 5/8", 2 3/4", 2 7/8", 3"		
3030	mm	32, 38, 40, 42, 45, 48, 55, 65, 70	108.0	76.2
	inch	1 1/4", 1 3/8", 1 1/2", 1 5/8", 1 3/4", 1 7/8", 2 1/8", 2 3/8", 2 5/8", 2 3/4", 3"		
3535	mm	35, 38, 40, 42, 45, 48, 50, 55, 60, 65, 70, 75, 80, 85, 90	127.0	88.9
	inch	1 1/2", 1 5/8", 1 3/4", 1 7/8", 2", 2 1/8", 2 1/4", 2 3/8", 2 1/2", 2 5/8", 2 3/4",		
	inch	2 7/8", 3", 3.1/8, 3.1/4", 3 3/8", 3 1/2"		
4040	mm	40, 55, 60, 65, 70, 75, 80, 85, 95, 100	146.0	101.6
	inch	1 3/8", 1 3/4", 1 7/8", 2", 2 1/8", 2 1/4", 2 1/2", 2 5/8", 3 1/2", 4"		
4545	mm	60, 65, 70, 75, 80, 85, 90, 95, 100, 105, 110	162.0	114.3
	inch	3", 3 1/8", 3 1/4", 3 3/8", 3 1/2", 3 3/4", 4 1/2"		
5050	mm	70, 95, 100, 110, 115, 120, 125	177.5	127.0

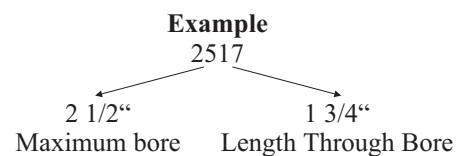
* Discontinued size, only limited bore sizes available.

OD = Outside Diameter

L = Length Through Bore

The first 2 digits of the part number are the maximum bore size in inches.

The second 2 digits of the part number are the length through bore in inches.



Useful Information

PULLEY DIAMETER - SPEED

When choosing a pulley that is made of cast iron care must be taken not to exceed pulley rim speed of 40 m/s. Centrifugal forces developed beyond this speed may prohibit the use of stock cast iron pulleys. For rim speeds exceeding 40 m/s, contact Naismith Engineering sales representative for recommendations. The formula below will help you work it out

$$\text{Metres/Sec} = \frac{(\text{O.D.} \times .001) \times 3.142 \times \text{RPM}}{60}$$

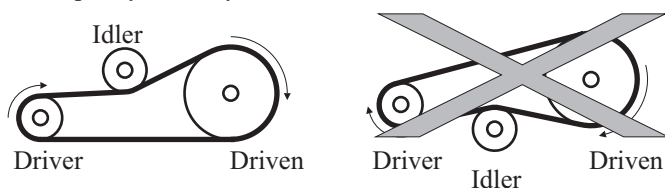
O.D. Is in millimetres

IDLERS

Use of idlers should be restricted to those cases in which they are functionally necessary. Idlers usually are used to apply tension when centres are not adjustable.

Idlers should be located on the slack side of the belt drive as close to the motor as possible. For inside idlers, grooved pulleys are recommended.

Outside or backside idlers should be flat and uncrowned. Diameters should generally not be smaller than the smallest loaded pulley in the system.



For Poly-V Pulleys with less than 10 ribs the idler width should be equal to the pulley width plus twice the rib pitch, and plus four times the rib pitch for 10 or more ribs.

BALANCING OF PULLEYS AND IDLERS

Poor balancing creates premature wear of bearings and can be the origin of severe vibratory problems. In extreme cases unbalanced components can cause shaft breakage.

Static balancing is done by the pulley manufacturer.

In addition, dynamic balancing is required when the belt speed exceeds 30 m/s.

ESTIMATING BELT LENGTH FROM DRIVE COMPONENTS (2 pulleys)

$$\text{Belt length} = 2C + 1.57(D + d) + \frac{(D - d)^2}{4C}$$

Belt length: C = shaft centre distance

For RMA Powerband, Truflex, PoweRated, Polyflex and

Micro-V:

Belt length = belt effective length

D = O.D. of larger pulley

d = O.D. of smaller pulley

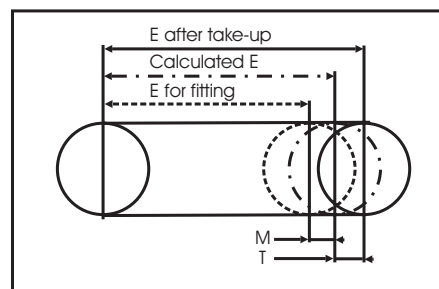
BELT STORAGE AND HANDLING

For storage, the belt should be protected from moisture, oil, temperature extremes, direct sunlight and high ozone environments. The belt should be stored in its original package where applicable, avoiding any sharp bends or crimping which will damage the belt.

FITTING AND TAKE-UP RECOMMENDATIONS FOR POLY-V PULLEYS

Margins are defined by the following table:

L (mm)	PJ		PK		PL		PM	
	M	T	M	T	M	T	M	T
<750	-10	+10	-11	+13				
750 to 1200	-10	+10	-12	+16	-15	+20		
1200 to 2000	-15	+20	-16	+22	-20	+25		
2000 to 3500	-20	+30	-23	+32	-30	+35	-40	+50
3500 to 6000					-40	+60	-50	+70
>6000							-100	+130



TENSIONING THE BELT

POLY V Belts must be tensioned correctly and with great care. Under or over-tensioning can cause functional problems and lead to premature belt failure.

ELONGATION METHOD

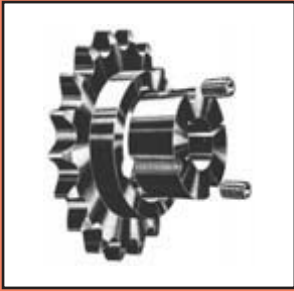
Requires no special equipment.

It is used for high power drives or centre distances greater than 1m.

- Fit the belt on the pulleys with no tension.
- Draw 2 lines perpendicularly across the back of the belt, one full span apart (on metre apart if possible).
- Increase the distance between the 2 lines by 0.7% (7mm for 1m).
- Run the drive under load for about ten minutes.
- Check the tension of the belt (i.e. The spacing between the 2 lines) and readjust to the following values if necessary:

PJ	PK	PL	PM
0.5%	0.6%	0.6%	0.6%

Notes



Sprockets in both B.S. A.S.A. - Plates, Simplex, Duplex & Triplex. Chain in B.S. A.S.A. Conveyor & Special chains.



We can supply more than 40 different types of coupling from 9 different suppliers.



Variable speed pulleys.
Zero-Max variable speed drives.



Winsmith gear boxes, Zero-max Crown Gear Drives & Tol-O-Matic Float-A-Shafts



Timing pulleys Classical, HTD, Metric T & AT & Poly Chain G.T. With belts to suit.



Other products include Locking Bushes, Shaft Collars, Timing Devices, Electric Motors & Differentials.



2004

Naismith Eng & Mfg Co Pty.Ltd
A.B.N. 25 004 284 388

149 Heidelberg Rd
Northcote, Victoria
Australia, 3070

Ph (03) 9489-9811
Fax (03) 9482-1474

www.naismith.com.au