



UNIFLEX COUPLING

UNIFLEX

U
This is a durable one-piece flexible coupling for general purpose shaft-to-shaft applications. It is the basis for all Uniflex coupling types.

RRU
This design offers “quick disconnect” for drop out requirements. It can also accommodate a slightly larger shaft diameter than the standard U type.

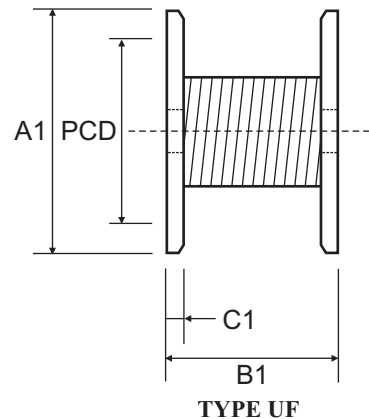
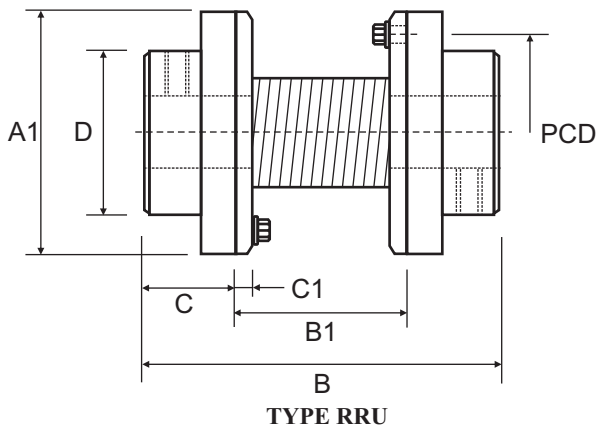
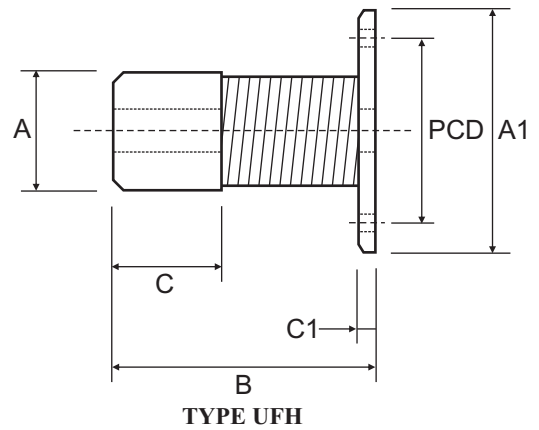
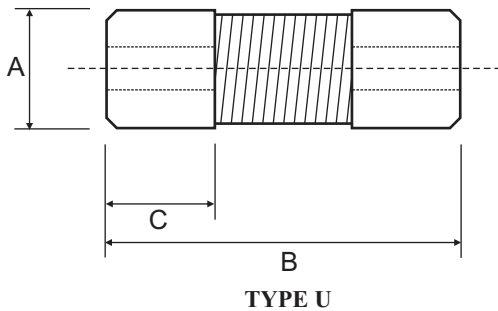
All Uniflex couplings use steel hubs/flanges and steel springs.

Size	Max Bore		Power at 100 RPM kW	Nominal Torque (Nm)	Normal Maximum Speed (RPM)
	U, UFH	RRU, UF			
18	6.4	-	0.021	2.0	30000
25	8.0	-	0.040	3.8	30000
37	9.7	-	0.046	4.4	30000
50	12.7	25.4	0.097	9.3	30000
62	16.0	-	0.149	14.2	20000
75	19.1	32.0	0.207	19.8	20000
87	22.4	35.1	0.409	39.1	10000
100	25.4	35.1	0.668	63.8	6000
125	31.8	42.0	0.893	85.3	6000
137	35.1	48.0	1.491	142.4	6000
150	38.1	54.0	2.236	213.5	3000

PERFORMANCE DATA

UFH
A flange-to-shaft configuration, this couples flange mounted equipment to a shaft with all the benefits of Uniflex versatility. The stock flange plate is the same as used on the UF type.

UF
This flange-to-flange type is designed to connect flange mounted equipment to another flange while compensating for misalignment. It is also the centre drop out section for the RRU type.





UNIFLEX COUPLING

DIMENSIONAL DATA

Part No.	Bore			Style Code	A	A1	B Reg	B Short	B1	C Reg	C Short	C1	D	PCD
	Min	Max U, UFH	Max RRU, UF											
18	3.0	6.4	-	U	15.5	-	25.4	-	-	7.9	-	-	-	-
25	3.0	8.0	-	U	18.5	-	38.1	25.4	-	9.7	8.1	-	-	-
37	6.4	9.7	-	U	21.8	-	52.3	41.9	-	13.2	13.2	-	-	-
50	7.9	12.7	25.4	U	26.4	-	63.5	46.2	-	16.3	12.7	-	-	-
				UFH	26.4	50.8	51.6	38.1	-	16.3	12.7	6.4	-	38.1
				RRU	-	50.8	89.4	-	39.6	25.4	-	6.4	50.8	38.1
				UF	-	50.8	-	-	39.6	-	-	6.4	-	38.1
62	7.9	16.0	-	U	36.1	-	69.1	57.9	-	21.3	15.7	-	-	
75	9.7	19.1	32.0	U	36.1	-	84.1	69.1	-	21.3	21.3	-	-	-
				UFH	36.1	63.5	65.5	50.8	-	21.3	21.3	9.7	-	50.8
				RRU	-	63.5	108.5	-	46.0	31.8	-	9.7	63.5	50.8
				UF	-	63.5	-	-	46.0	-	-	9.7	-	50.8
87	11.2	22.4	35.1	U	43.9	-	88.9	73.9	-	21.3	21.3	-	-	-
				UFH	43.9	73.2	71.6	56.9	-	21.3	21.3	9.7	-	57.2
				RRU	-	73.2	122.9	-	53.8	35.1	-	9.7	72.9	57.2
				UF	-	73.2	-	-	53.8	-	-	9.7	-	57.2
100	11.2	25.4	35.1	U	53.6	-	104.6	90.4	-	32.8	25.4	-	-	-
				UFH	53.6	82.6	80.5	73.2	-	32.8	25.4	9.7	-	68.1
				RRU	-	82.6	124.5	-	55.4	35.1	-	9.7	58.7	68.1
				UF	-	82.6	-	-	55.4	-	-	9.7	-	68.1
125	15.7	31.8	42.0	U	55.1	-	124.0	95.3	-	32.5	27.9	-	-	-
				UFH	55.1	93.5	95.3	71.6	-	32.5	27.9	12.7	-	79.2
				RRU	-	93.5	148.3	-	66.5	41.1	-	12.7	69.9	79.2
				UF	-	93.5	-	-	66.5	-	-	12.7	-	79.2
137	15.7	35.1	48.0	U	64.5	-	133.4	104.6	-	40.1	25.7	-	-	-
				UFH	64.5	111.3	102.4	87.9	-	40.1	25.9	12.7	-	95.3
				RRU	-	111.3	165.9	-	71.4	47.8	-	12.7	82.6	95.3
				UF	-	111.3	-	-	71.4	-	-	12.7	-	95.3
150	19.1	38.1	54.0	U	75.7	-	159.5	127.0	-	47.8	43.7	-	-	-
				UFH	75.7	136.7	123.4	95.3	-	47.8	43.7	16.0	-	111.3
				RRU	-	136.7	194.6	-	87.4	53.8	-	16.0	95.3	111.3
				UF	-	136.7	-	-	87.4	-	-	16.0	-	111.3