

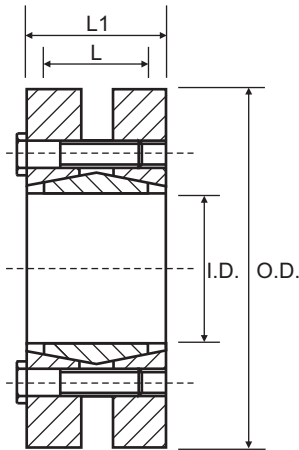


CAL11S (Shrink Disc)

Consists of one inside and two outside cone rings, which are joined by a set of screws. It is suitable for medium high torques. CAL11S shrink disc is used for clamping a hollow shaft to a standard shaft. Available for hollow shaft diameters from 14 to 480 mm.

Characteristics

Medium-high torque
No shaft-hub axial movement
Quick installation
Quick dismantling



Part No.	I.D.	O.D.	S.D.	L	L1	Torque Nm	Axial Force N
CAL11S--14/38*	14	38	12	7	11	50	9000
CAL11S--16/41*	16	41	14	11	15	90	13000
CAL11S--18/43*	18	43	15	11	15	90	13000
CAL11S--24/50	24	50	21	14	19.5	250	30000
CAL11S--30/60	30	60	26	16	21.5	380	30000
CAL11S--36/72	36	72	31	18	23.5	630	60000
CAL11S--44/80	44	80	36	20	25.5	860	80000
CAL11S--50/90	50	90	42	22	27.5	1380	90000
CAL11S--55/100	55	100	48	23	30.5	1880	100000
CAL11S--62/110	62	110	52	23	30.5	2250	120000
CAL11S--68/115	68	115	60	23	30.5	3150	120000
CAL11S--75/138	75	138	65	25	32.5	3950	160000
CAL11S--80/145	80	145	70	25	32.5	4600	160000
CAL11S--85/155*	85	155	75	30	39	7400	216000
CAL11S--90/155	90	155	75	30	39	7250	210000
CAL11S-100/170	100	170	80	34	44	9000	240000
CAL11S-110/185	110	185	85	39	50	10800	260000
CAL11S-125/215	125	215	95	42	54	15000	350000
CAL11S-140/230	140	230	105	46	60.5	20100	430000
CAL11S-155/265	155	265	115	50	64.5	28000	510000
CAL11S-165/290	165	290	125	56	71	39000	660000
CAL11S-175/300	175	300	135	56	71	45000	680000
CAL11S-185/330	185	330	145	71	86	62000	860000
CAL11S-195/350	195	350	155	71	86	81500	1070000
CAL11S-200/350	200	350	160	71	86	86000	1080000
CAL11S-220/370	220	370	170	88	104	110000	1290000
CAL11S-240-405	240	405	190	92	109	156000	1680000
CAL11S-260/430	260	430	210	103	120	205000	2010000
CAL11S-280/460	280	460	230	114	134	270000	2350000
CAL11S-300/485	300	485	245	122	142	315000	2640000

S.D.: The maximum shaft diameter. Smaller shaft diameters can be used at reduced Torque and Axial Force.

* Discontinued size, Limited stock available
All dimensions in mm unless otherwise stated

Torque = Maximum transmittable torque when axial force is zero.

Axial Force = Maximum axial force when transmittable torque is zero.

For CAL11S use the following tolerances

From 18 - 30 mm dw H6/j6
From 30 - 50 mm dw H6/h6
From 50 - 80 mm dw H6/g6
From 80 - 500 mm dw H7/g6

Locking Bush Conversion Chart

SIT (CAL)	TOLLOK (TLK)	Lovejoy (SLD)	MAV	RINGFEDER (RFN)	RINGBLOK	BIKON	COMPOMAC (Conex)	KTR (Clampex)
CAL1	200	1500*	2005	7012	1120	4000	A	100
CAL2	300		3003	8006	1060	5000	C	150
CAL3	110	1900*	5061	7110.1	1100	8000	B*	250
CAL4	450	2600*	4061	7005	1800	1012	F*	400
CAL5A	130		6901	7004	1300.1	7000A	D	200
CAL5B	131		6902	7007	1300.2	7000B	E	201
CAL6	132	1850*	1062	7003	1710	1003	DS	203
CAL7	133	1750*	1061	7006	1720	1006	ES	206
CAL8	134		3061		2400	1506	EP	225
CAL9	250*		3505		1500C	5500SP	H	125
CAL10	500		1004*	7020	1600	9500*	M	700
CAL11S	603	900*	2008	4071	2200.01	1029.71	SD	603
CAL12S	139		4005		1000	4500	L	90
CAL13S	250L		3705		1500	5500S	I	125.1
CAL15	350			7061				

* External diameters and torque ratings may vary between suppliers

