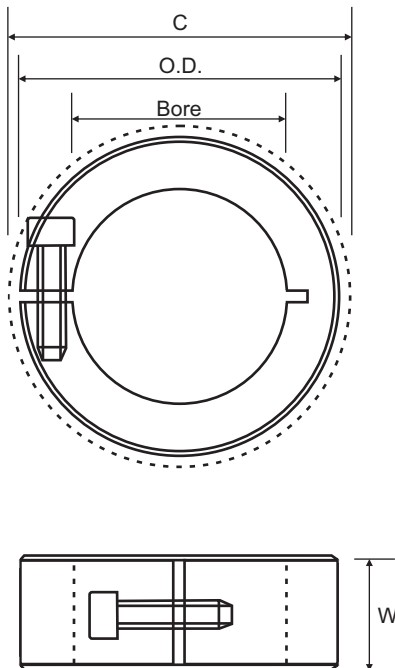




One Piece Split (Clamp Type) Metric

One-piece clamp style collars wrap around the shaft for even greater distribution of clamping forces. This results in a tight fit and greater holding power, without the shaft damage caused by set screws. Ruland uses carefully selected materials and proprietary processes to ensure that the clamping gap remains open for simpler and more precise adjustment.



- Does not mar the shaft.
- Single point faced.
- Balanced versions available.
- Additional sizes available.

-Width tolerance:
 All +.08 mm
 - .25 mm

Part No.	Bore (mm)	O.D. (mm)	C (mm)	W (mm)	F	A	SS	P
MCL-4	4.0	16.0	20.8	9.0	✓	✓	✓	✓
MCL-5	5.0	16.0	20.8	9.0	✓	✓	✓	✓
MCL-6	6.0	16.0	20.8	9.0	✓	✓	✓	✓
MCL-8	8.0	18.0	22.4	9.0	✓	✓	✓	✓
MCL-10	10.0	24.0	26.3	9.0	✓	✓	✓	✓
MCL-12	12.0	28.0	32.0	11.0	✓	✓	✓	✓
MCL-14	14.0	30.0	33.7	11.0	✓	✓	✓	
MCL-15	15.0	34.0	39.3	13.0	✓	✓	✓	✓
MCL-16	16.0	34.0	39.3	13.0	✓	✓	✓	✓
MCL-19	19.0	40.0	47.4	15.0	✓	✓	✓	
MCL-20	20.0	40.0	47.4	15.0	✓	✓	✓	✓
MCL-22	22.0	42.0	49.5	15.0	✓	✓	✓	✓
MCL-24	24.0	45.0	52.1	15.0	✓	✓	✓	
MCL-25	25.0	45.0	52.1	15.0	✓	✓	✓	✓
MCL-28	28.0	48.0	54.7	15.0	✓	✓	✓	✓
MCL-30	30.0	54.0	59.2	15.0	✓	✓	✓	✓
MCL-32	32.0	54.0	59.2	15.0	✓	✓	✓	
MCL-35	35.0	57.0	62.4	15.0	✓	✓	✓	
MCL-38	38.0	60.0	65.6	15.0	✓	✓	✓	
MCL-40	40.0	60.0	65.6	15.0	✓	✓	✓	
MCL-42	42.0	73.0	80.1	19.0	✓	✓	✓	
MCL-45	45.0	73.0	80.1	19.0	✓	✓	✓	
MCL-48	48.0	78.0	84.7	19.0	✓	✓	✓	
MCL-50	50.0	78.0	84.7	19.0	✓	✓	✓	
MCL-55	55.0	82.0	88.8	19.0	✓		^	
MCL-60	60.0	88.0	94.0	19.0	✓		^	
MCL-65	65.0	93.0	99.8	19.0	✓		^	
MCL-70	70.0	98.0	104.5	19.0	✓		^	
MCL-75	75.0	103.0	109.1	19.0	✓		^	
MCL-80	80.0	108.0	113.8	19.0	✓		^	

✓ Stocked Size ^ Available on request

Steel - Black Oxide (F)

Cold drawn bar. Hot process black oxide, impregnated with naphthenic oil, centrifugal dried.

Aluminium (A)

2024-T351 bar with a bright finish.

Stainless Steel (SS)

Stainless Steel Grade 303 austenitic, non-magnetic bar with a bright finish.

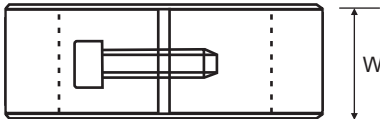
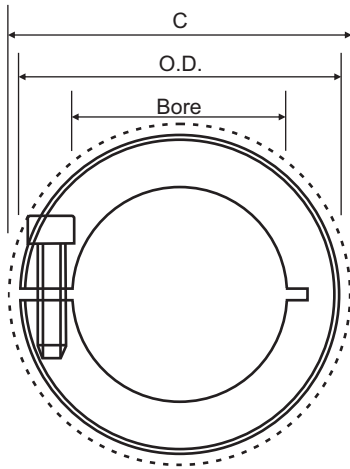
Acetal (P)

Delrin 150E (White) with a plain finish



One Piece Split (Clamp Type) Inch

One-piece clamp style collars wrap around the shaft for even greater distribution of clamping forces. This results in a tight fit and greater holding power, without the shaft damage caused by set screws. Ruland uses carefully selected materials and proprietary processes to ensure that the clamping gap remains open for simpler and more precise adjustment.



Part No.	Bore (in)	O.D. (in)	C (in)	W (in)	F	A	SS	P
CL-2	0.1250	0.625	0.773	0.281	✓	✓	✓	
CL-3	0.1875	0.625	0.773	0.281	✓	✓	✓	✓
CL-4	0.2500	0.625	0.773	0.281	✓	✓	✓	✓
CL-5	0.3125	0.688	0.838	0.281	✓	✓	✓	✓
CL-6	0.3750	0.875	1.027	0.343	✓	✓	✓	✓
CL-7	0.4375	0.938	1.080	0.343	✓	✓	✓	✓
CL-8	0.5000	1.125	1.281	0.406	✓	✓	✓	✓
CL-10	0.6250	1.313	1.500	0.437	✓	✓	✓	✓
CL-12	0.7500	1.500	1.808	0.500	✓	✓	✓	✓
CL-14	0.8750	1.625	1.916	0.500	✓	✓	✓	✓
CL-16	1.0000	1.750	2.032	0.500	✓	✓	✓	✓
CL-18	1.1250	1.875	2.140	0.500	✓	✓	✓	✓
CL-20	1.2500	2.063	2.295	0.500	✓	✓	✓	✓
CL-22	1.3750	2.250	2.465	0.563	✓	✓	✓	^
CL-24	1.5000	2.375	2.578	0.563	✓	✓	✓	✓
CL-26	1.6250	2.625	2.935	0.688	✓	✓	✓	^
CL-28	1.7500	2.750	3.046	0.688	✓	✓	✓	✓
CL-30	1.8750	2.875	3.160	0.688	✓	✓	✓	✓
CL-32	2.0000	3.000	3.273	0.688	✓	✓	✓	✓

✓ Stocked Size

^ Available on request

Steel - Black Oxide (F)

Cold drawn bar. Hot process black oxide, impregnated with naphthenic oil, centrifugal dried.

Aluminium (A)

2024-T351 bar with a bright finish.

Stainless Steel (SS)

Stainless Steel Grade 303 austenitic, non-magnetic bar with a bright finish.

Acetal (P)

Delrin 150E (White) with a plain finish

- Does not mar the shaft.
- Single point faced.
- Balanced versions available.
- Additional sizes available.

-Width tolerance:

All +.003"
 -.010"