



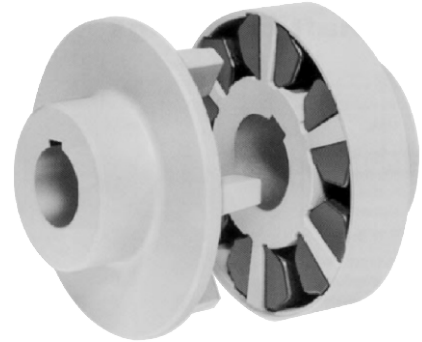
CENTAFLEX 'E' COUPLING

CENTAFLEX 'E'

The 'E' series coupling is very similar to the 'D' series but has been designed to be mounted shaft to shaft on electric motor applications.

Part No.	Max Bore		Power at 100 RPM kW	Nominal Torque (Nm)	Normal Maximum Speed (RPM)
	Hub mm	Flange mm			
CFE160	60.0	70.0	6.283	600	6200
CFE198	75.0	85.0	12.565	1200	5000
CFE220	85.0	100.0	26.178	2500	4500
CFE275	100.0	120.0	52.356	5000	3600
CFE350	130.0	125.0	104.712	10000	2800

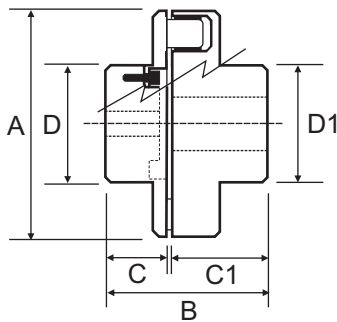
PERFORMANCE DATA



- Simple, robust, safe in operation, compact, fail safe
- Damps vibration and shock loads
- Accepts axial, angular & radial misalignment.

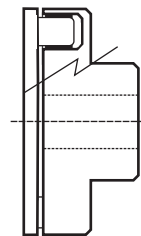
DIMENSIONAL DATA

TYPE 2

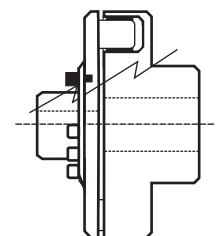


Type 2 is the most popular type for Centaflex couplings. Type 1 & 3 are also available, contact Naismith Engineering for more information.

TYPE 1



TYPE 3



Part No.	Bore				A	B	C	C1	D	D1
	Min Hub	Max Hub	Min Flange	Max Flange						
CFE-160-2-120	-	60.0	-	70.0	160.0	120.0	55.0	55.0	100.0	90.0
CFE-160-2-157	-	60.0	-	70.0	160.0	157.0	55.0	92.0	100.0	90.0
CFE-198-2-147	-	75.0	-	85.0	198.0	147.0	55.0	82.0	120.0	115.0
CFE-198-2-171	-	75.0	-	85.0	198.0	171.0	55.0	106.0	120.0	115.0
CFE-220-2-162	-	85.0	-	100.0	220.0	162.0	70.0	82.0	140.0	124.0
CFE-220-2-202	-	85.0	-	100.0	220.0	202.0	70.0	122.0	140.0	124.0
CFE-275-2-174	-	100.0	-	120.0	275.0	174.0	82.0	82.0	170.0	145.0
CFE-275-2-234	-	100.0	-	120.0	275.0	234.0	82.0	142.0	170.0	145.0
CFE-350-2-225	65.0	130.0	50.0	125.0	350.0	225.0	120.0	90.0	200.0	192.0
CFE-350-2-225	65.0	130.0	50.0	125.0	350.0	285.0	120.0	150.0	200.0	192.0

Dimensions based on TYPE 2 coupling