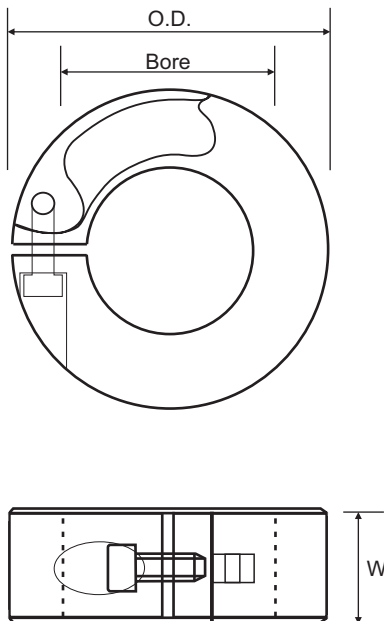




## Quick Clamping One Piece Split Metric

Ruland's Quick clamp style collars are designed for fast assembly and disassembly of the collar. They are ideal for applications where the collar must be moved or adjusted on a regular basis. No tools are required to connect and disconnect the collar. This style of collar wraps around the shaft for greater distribution of clamping forces. This results in a tight fit and greater holding power, without the shaft damage caused by set screws. Ruland uses carefully selected materials and proprietary processes to ensure that the clamping gap remains open for simpler and more precise adjustment.



Part No.	Bore (mm)	O.D. (mm)	W (mm)	A
MQCL-6	6.0	38.0	10.0	✓
MQCL-8	8.0	38.0	10.0	✓
MQCL-10	10.0	38.0	10.0	✓
MQCL-12	12.0	38.0	10.0	✓
MQCL-14	14.0	38.0	10.0	✓
MQCL-15	15.0	38.0	10.0	✓
MQCL-16	16.0	38.0	10.0	✓
MQCL20	20.0	50.0	13.0	✓
MQCL-25	25.0	50.0	13.0	✓
MQCL-28	28.0	50.0	13.0	✓
MQCL-30	30.0	50.0	13.0	✓
MQCL-32	32.0	75.0	15.0	✓
MQCL-35	35.0	75.0	15.0	✓
MQCL-38	38.0	75.0	15.0	✓
MQCL-40	40.0	100.0	19.0	✓
MQCL-42	42.0	100.0	19.0	✓
MQCL-45	45.0	100.0	19.0	✓
MQCL-48	48.0	100.0	19.0	✓
MQCL-50	50.0	100.0	19.0	✓
MQCL-54	54.0	120.0	19.0	✓
MQCL-55	55.0	120.0	19.0	✓
MQCL-60	60.0	120.0	19.0	✓
MQCL-65	65.0	120.0	19.0	✓
MQCL-70	70.0	120.0	19.0	✓
MQCL-75	75.0	120.0	19.0	✓

- Does not mar the shaft.
- No tools required.
- Designed for quick adjustments
- Quick release
- Made from high quality aluminium.

### -Width tolerance:

All  
 +.076mm  
 -.254mm

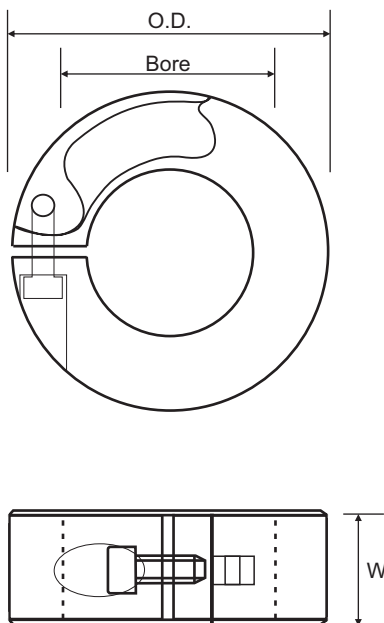
### Aluminium (A)

2024-T351 bar with a bright finish.



## Quick Clamping One Piece Split Inch

Ruland's Quick clamp style collars are designed for fast assembly and disassembly of the collar. They are ideal for applications where the collar must be moved or adjusted on a regular basis. No tools are required to connect and disconnect the collar. This style of collar wraps around the shaft for greater distribution of clamping forces. This results in a tight fit and greater holding power, without the shaft damage caused by set screws. Ruland uses carefully selected materials and proprietary processes to ensure that the clamping gap remains open for simpler and more precise adjustment.



Part No.	Bore (in)	O.D. (in)	W (in)	A
QCL-4	0.25	1.50	0.39	✓
QCL-5	0.31	1.50	0.39	✓
QCL-6	0.38	1.50	0.39	✓
QCL-8	0.50	1.50	0.39	✓
QCL-10	0.63	1.50	0.39	✓
QCL-12	0.75	1.97	0.51	✓
QCL-16	1.00	1.97	0.51	✓
QCL-18	1.13	1.97	0.51	✓
QCL-20	1.25	2.95	0.59	✓
QCL-22	1.38	2.95	0.59	✓
QCL-24	1.50	2.95	0.59	✓
QCL-26	1.63	3.94	0.75	✓
QCL-28	1.75	3.94	0.75	✓
QCL-30	1.88	3.94	0.75	✓
QCL-32	2.00	3.94	0.75	✓
QCL-34	2.13	4.72	0.75	✓
QCL-36	2.25	4.72	0.75	✓
QCL-38	2.38	4.72	0.75	✓
QCL-40	2.50	4.72	0.75	✓
QCL-42	2.63	4.72	0.75	✓
QCL-44	2.75	4.72	0.75	✓
QCL-46	2.88	4.72	0.75	✓
QCL-48	3.00	4.72	0.75	✓

✓ Stocked Size

- Does not mar the shaft.
- No tools required.
- Designed for quick adjustments
- Quick release
- Made from high quality aluminium.

### -Width tolerance:

All  
 +.003"  
 -.010"

### Aluminium (A)

2024-T351 bar with a bright finish.