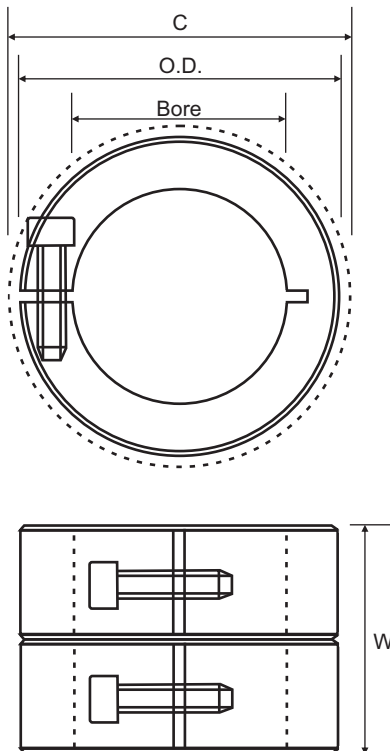




Double Wide One Piece Split (Clamp Type) Metric & Inch

Ruland's double width collars in one piece clamp design in are available in steel and stainless steel. Clamp style collars wrap around the shaft, providing high torsional holding power without the shaft damage and fretting that occurs when set screw style collars are used.



Part No.	Bore (mm)	O.D. (mm)	C (mm)	W (mm)	F	A	SS
MWCL-6	6.00	16.00	20.80	20.00	✓	✓	✓
MWCL-8	8.00	18.00	22.40	20.00	✓	✓	✓
MWCL-10	10.00	24.00	26.30	20.00	✓	✓	✓
MWCL-12	12.00	28.00	32.00	24.00	✓	✓	✓
MWCL-16	16.00	34.00	39.30	28.00	✓		✓
MWCL-20	20.00	40.00	47.40	33.00	✓		✓
MWCL-25	25.00	45.00	52.10	33.00	✓		✓
WCL-2	3.18	15.88	19.63	15.88	✓	✓	✓
WCL-3	4.78	15.88	19.63	15.88	✓	✓	✓
WCL-4	6.35	15.88	19.63	15.88	✓	✓	✓
WCL-5	7.95	17.46	21.29	15.88	✓	✓	✓
WCL-6	9.53	22.23	26.09	19.05	✓	✓	✓
WCL-8	12.70	28.58	32.54	22.23	✓	✓	✓
WCL-10	15.88	33.34	38.10	23.81	✓		✓
WCL-12	19.05	38.10	45.92	26.99	✓		✓
WCL-14	22.23	41.28	48.67	26.99	✓		✓
WCL-16	25.40	44.45	51.61	26.99	✓		✓
WCL-18	28.58	47.63	54.36	26.99	✓		✓
WCL-20	31.75	52.39	58.29	26.99	✓		✓
WCL-24	38.10	60.33	65.48	30.16	✓		✓
WCL-28	44.45	69.85	77.37	37.31	✓		✓
WCL-32	50.80	76.20	85.34	37.31	✓		✓

✓ Stocked Size

- Does not mar the shaft.
- Single point faced.
- Balanced versions available.
- Additional sizes available.

-Width tolerance:
All +.076mm
 -.254mm

Steel - Black Oxide (F)

Cold drawn bar. Hot process black oxide, impregnated with naphthenic oil, centrifugal dried.

Aluminium (A)

2024-T351 bar with a bright finish.

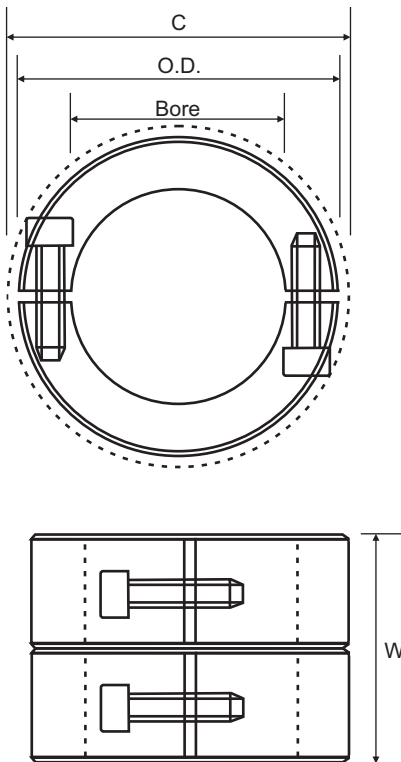
Stainless Steel (SS)

Stainless Steel Grade 303 austenitic, non-magnetic bar with a bright finish.



Double Wide Two Piece Split (Clamp Type) Metric & Inch

Ruland's double width collars in two piece clamp design are available in steel and stainless steel. Clamp style collars wrap around the shaft, providing high torsional holding power without the shaft damage and fretting that occurs when set screw style collars are used. Two-piece clamp styles also allow for disassembly and maintenance without removal of other machine components and feature opposing hardware from a balanced design.



Part No.	Bore (mm)	O.D. (mm)	C (mm)	W (mm)	F	SS
MWSP-6	6.00	16.00	20.80	20.00	✓	✓
MWSP-8	8.00	18.00	22.40	20.00	✓	✓
MWSP-10	10.00	24.00	26.30	20.00	✓	✓
MWSP-12	12.00	28.00	32.00	24.00	✓	✓
MWSP-16	16.00	34.00	39.30	28.00	✓	✓
MWSP-20	20.00	40.00	47.40	33.00	✓	✓
MWSP-25	25.00	45.00	52.10	33.00	✓	✓
WSP-2	3.18	15.88	19.63	15.88	✓	✓
WSP-3	4.78	15.88	19.63	15.88	✓	✓
WSP-4	6.35	15.88	19.63	15.88	✓	✓
WSP-5	7.95	17.46	21.29	15.88	✓	✓
WSP-6	9.53	22.23	26.09	19.05	✓	✓
WSP-8	12.70	28.58	32.54	22.23	✓	✓
WSP-10	15.88	33.34	38.10	23.81	✓	✓
WSP-12	19.05	38.10	45.92	26.99	✓	✓
WSP-14	22.23	41.28	48.67	26.99	✓	✓
WSP-16	25.40	44.45	51.61	26.99	✓	✓
WSP-18	28.58	47.63	54.36	26.99	✓	✓
WSP-20	31.75	52.39	58.29	26.99	✓	✓
WSP-24	38.10	60.33	65.48	30.16	✓	✓
WSP-28	44.45	69.85	77.37	37.31	✓	✓
WSP-32	50.80	76.20	85.34	37.31	✓	✓

✓ Stocked Size

Steel - Black Oxide (F)

Cold drawn bar. Hot process black oxide, impregnated with naphthenic oil, centrifugal dried.

Stainless Steel (SS)

Stainless Steel Grade 303 austenitic, non-magnetic bar with a bright finish.

- Does not mar the shaft.
- Single point faced.
- Balanced versions available.
- Additional sizes available.

-Width tolerance:

All +.076mm
 -.254mm