



## CENTAFLEX 'A' COUPLING

### CENTAFLEX 'A'

The 'A' series coupling consists of two steel hubs and a pre-stressed polygon shaped rubber element with metal parts vulcanised. The high quality element, which is extremely flexible in any direction, can be used for almost any purpose. This coupling is available in either a three or four bolt design, and is also available in many styles. (Refer to drawings)

- Simple, compact, smooth face design
- High performance, high speed range
- Good shock & vibration absorbing
- Requires no maintenance
- No axial reaction forces

### PERFORMANCE DATA

Part No.	Max Bore		Power at 100 RPM kW	Nominal Torque (Nm)	Normal Maximum Speed (RPM)
	Hub	Flange			
CFA001	19.0	25.0	0.105	10.0	10000
CFA002	26.0	38.0	0.209	20.0	8000
CFA004	30.0	45.0	0.524	50.0	7000
CFA008	38.0	55.0	1.047	100.0	6500
CFA012	38.0	55.0	1.466	140.0	6500
CFA016	48.0	70.0	2.094	200.0	6000
CFA022	48.0	70.0	2.880	275.0	6000
CFA025	55.0	85.0	3.298	315.0	5000
CFA028	55.0	85.0	4.398	420.0	5000
CFA030	65.0	100.0	5.236	500.0	4000
CFA050	65.0	100.0	7.330	700.0	4000
CFA080	65.0	100.0	9.424	900.0	4000
CFA090	85.0	110.0	11.518	1100.0	3600
CFA140	85.0	110.0	17.801	1700.0	3600
CFA250	115.0	130.0	31.414	3000.0	3000

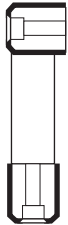




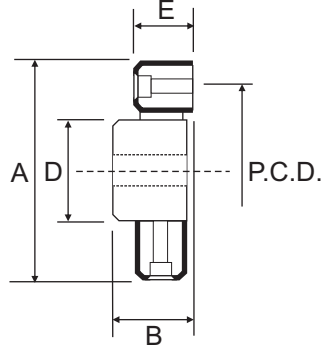
# CENTAFLEX 'A' COUPLING

## DIMENSIONAL DATA

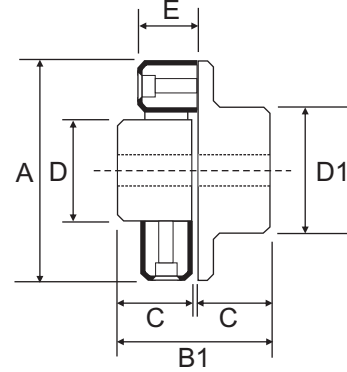
**TYPE 0**



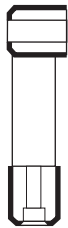
**TYPE 1**



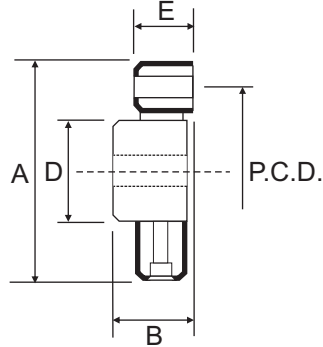
**TYPE 2**



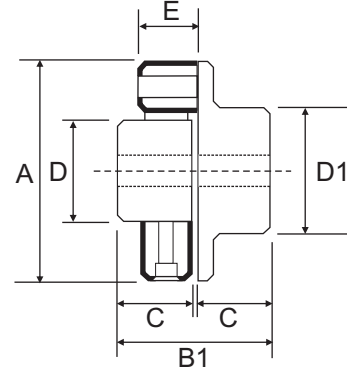
**TYPE 0S**



**TYPE 1S**



**TYPE 2S**



Part No.	Bore			A	B	B1	C	D	D1	E	PCD	No. Bolts
	Min Hub	Max Hub	Max Flange									
CFA001	8.0	19.0	25.0	56.0	26.0	50.0	24.0	30.0	36.0	24.0	44.0	2
CFA002	10.0	26.0	38.0	85.0	32.0	60.0	28.0	40.0	55.0	24.0	68.0	2
CFA004	12.0	30.0	45.0	100.0	34.0	64.0	30.0	45.0	65.0	28.0	80.0	3
CFA008	12.0	38.0	55.0	120.0	46.0	88.0	42.0	60.0	80.0	32.0	100.0	3
CFA012	12.0	38.0	55.0	122.0	46.0	88.0	42.0	60.0	80.0	32.0	100.0	4
CFA016	15.0	48.0	70.0	150.0	56.0	106.0	50.0	70.0	100.0	42.0	125.0	3
CFA022	15.0	48.0	70.0	150.0	56.0	106.0	50.0	70.0	100.0	42.0	125.0	4
CFA025	15.0	55.0	85.0	170.0	61.0	116.0	55.0	85.0	115.0	46.0	140.0	3
CFA028	15.0	55.0	85.0	170.0	61.0	116.0	55.0	85.0	115.0	46.0	140.0	4
CFA030	20.0	65.0	100.0	200.0	74.0	140.0	66.0	100.0	140.0	58.0	165.0	3
CFA050	20.0	65.0	100.0	200.0	74.0	140.0	66.0	100.0	140.0	58.0	165.0	4
CFA080	20.0	65.0	100.0	205.0	75.5	141.5	66.0	100.0	140.0	65.0	165.0	4
CFA090	30.0	85.0	110.0	260.0	88.0	168.0	80.0	125.0	160.0	70.0	215.0	3
CFA140	30.0	85.0	110.0	260.0	88.0	168.0	80.0	125.0	160.0	70.0	215.0	4
CFA250	40.0	115.0	130.0	340.0	108.0	208.0	100.0	160.0	195.0	85.0	280.0	4