



GST Type C

SITEX - ST

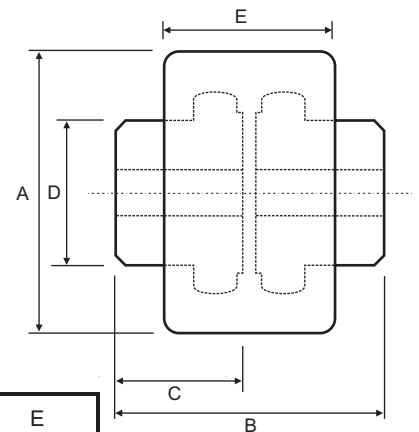
This coupling is based on the standard SITEX Gear Coupling but uses a steel sleeve instead of a Polyamide one. It uses the Optigear crown gear tooth, to allow greater surface contact on the tooth and greater misalignment. A seal is attached to the sleeve on each side of the coupling to hold in the coupling grease. Much stronger than the Polyamide coupling this coupling, is capable of transmitting up to 34,000Nm

| Part No. | Max bore | Power at 100 RPM kW | Nominal Torque (Nm) | Normal maximum Speed (RPM) |
|-----------|----------|---------------------|---------------------|----------------------------|
| GSTC-28 | 28 | 6.3 | 600 | 7700 |
| GSTC-38 | 38 | 8.9 | 850 | 5800 |
| GSTC- 48 | 48 | 13.6 | 1300 | 5100 |
| GSTC- 62 | 62 | 23.0 | 2200 | 4000 |
| GSTC- 82 | 82 | 39.8 | 3800 | 3200 |
| GSTC- 98 | 98 | 73.3 | 7000 | 2750 |
| GSTC- 110 | 110 | 104.7 | 10000 | 2300 |
| GSTC- 133 | 133 | 157.1 | 15000 | 2000 |
| GSTC- 155 | 155 | 251.3 | 24000 | 1650 |
| GSTC- 170 | 170 | 356.0 | 34000 | 1550 |

PERFORMANCE DATA



DIMENSIONAL DATA



| Part No. | Bore | | A | B | C | D | E |
|-----------|------|-----|-------|-------|-------|-------|-------|
| | Min | Max | | | | | |
| GSTC-28 | - | 28 | 70.0 | 85.0 | 41.0 | 40.0 | 61.0 |
| GSTC-38 | - | 38 | 85.0 | 100.0 | 48.5 | 55.0 | 65.0 |
| GSTC- 48 | - | 48 | 95.0 | 115.0 | 56.0 | 65.0 | 82.0 |
| GSTC- 62 | - | 62 | 120.0 | 140.0 | 68.0 | 85.0 | 90.0 |
| GSTC- 82 | - | 82 | 145.0 | 153.0 | 74.5 | 110.0 | 96.0 |
| GSTC- 98 | - | 98 | 175.0 | 170.0 | 82.5 | 130.0 | 113.0 |
| GSTC- 110 | - | 110 | 198.0 | 216.0 | 105.0 | 150.0 | 130.0 |
| GSTC- 133 | - | 133 | 230.0 | 288.0 | 140.0 | 180.0 | 175.0 |
| GSTC- 155 | - | 155 | 270.0 | 330.0 | 160.0 | 210.0 | 214.0 |
| GSTC- 170 | - | 170 | 300.0 | 370.0 | 180.0 | 230.0 | 240.0 |



GST Type CV

SITEX - ST

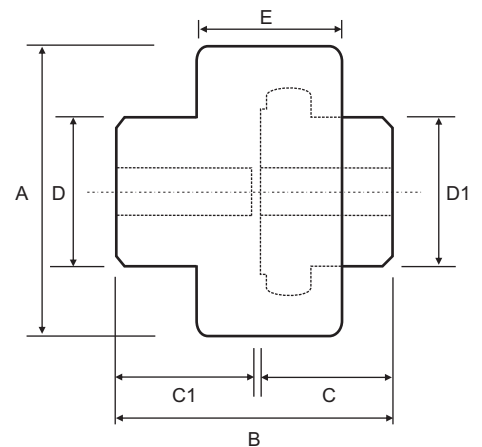
This coupling is based on the standard SITEX Gear Coupling but uses a steel sleeve instead of a Polyamide one. It uses the Optigear crown gear tooth, to allow greater surface contact on the tooth and greater misalignment. This coupling is a 2 piece with one male hub and 1 female sleeve. A seal is attached to the hub to hold in the coupling grease. Much stronger than the Polyamide coupling, this coupling is capable of transmitting up to 10,000Nm

| Part No. | Max bore | Power at 100 RPM kW | Nominal Torque (Nm) | Normal maximum Speed (RPM) |
|------------|----------|---------------------|---------------------|----------------------------|
| GSTCV-28 | 28 | 6.3 | 600 | 7700 |
| GSTCV-38 | 38 | 8.9 | 850 | 5800 |
| GSTCV- 48 | 48 | 13.6 | 1300 | 5100 |
| GSTCV- 62 | 62 | 23.0 | 2200 | 4000 |
| GSTCV- 82 | 82 | 39.8 | 3800 | 3200 |
| GSTCV- 98 | 98 | 73.3 | 7000 | 2750 |
| GSTCV- 110 | 110 | 104.7 | 10000 | 2300 |

PERFORMANCE DATA



DIMENSIONAL DATA



| Part No. | Bore | | A | B | C | C1 | D | D1 | E |
|------------|------|-----|-------|-------|-------|------|-------|-------|------|
| | Min | Max | | | | | | | |
| GSTCV-28 | - | 28 | 70.0 | 85.0 | 41.0 | 41.0 | 42.0 | 40.0 | 43.0 |
| GSTCV-38 | - | 38 | 85.0 | 100.0 | 48.5 | 48.5 | 55.0 | 55.0 | 49.0 |
| GSTCV- 48 | - | 48 | 95.0 | 115.0 | 56.0 | 56.0 | 65.0 | 65.0 | 54.5 |
| GSTCV- 62 | - | 62 | 120.0 | 132.0 | 68.0 | 60.0 | 85.0 | 85.0 | 60.0 |
| GSTCV- 82 | - | 82 | 145.0 | 140.0 | 74.5 | 61.5 | 110.0 | 110.0 | 63.0 |
| GSTCV- 98 | - | 98 | 175.0 | 153.0 | 82.5 | 65.5 | 130.0 | 130.0 | 76.0 |
| GSTCV- 110 | - | 110 | 198.0 | 201.0 | 105.0 | 90.0 | 150.0 | 150.0 | 92.0 |