



# JAW COUPLING

## RULAND JAWFLEX™ JAW

Ruland's zero backlash jaw couplings are three piece couplings comprised of two hubs and an elastic element. The spider, made of an advanced polyurethane material, provides dampening of impulse loads, minimizing shock to the motor and other sensitive equipment. Available in two shore hardnesses, these spiders allow the user to customize the jaw coupling's performance. Selecting a soft spider will give the Jawflex™ the greatest dampening characteristics, while a hard spider will provide the greatest torsional stiffness and strength. All spiders are press fit onto a curved jaw profile, assuring zero backlash operation.

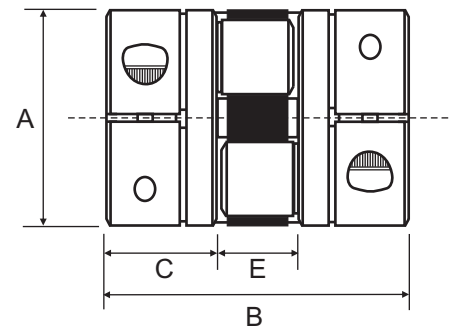
## PERFORMANCE DATA



Part No.		Max Bore	Power at 100 RPM kW	Nominal Torque (Nm)		Normal Maximum Speed (RPM)
Clamp	Set Screw			92 Shore A	98 Shore A	
JC10	JS10	6.4	0.006	0.6	0.9	8000
JC12	JS12	7.9	0.010	1.0	1.7	8000
JC16	JS16	12.7	0.035	3.3	8.5	8000
JC21	JS21	15.9	0.042	4.0	9.9	8000
JC26	JS26	19.1	0.115	11.0	18.7	8000
JC32	JS32	25.4	0.261	24.9	31.2	8000
JC36	JS36	28.6	0.338	32.3	46.5	8000

Power at 100 RPM based on Shore 92 A

## DIMENSIONAL DATA



Part No.		Bore		A	B	C	E
Clamp	Set Screw	Min	Max				
JC10	JS10	3.2	6.4	15.0	22.9	7.6	7.7
JC12	JS12	4.8	7.9	19.1	27.9	9.8	8.3
JC16	JS16	6.4	12.7	25.4	31.8	11.9	8.0
JC21	JS21	7.9	15.9	33.3	47.6	15.0	17.6
JC26	JS26	9.5	19.1	41.3	50.8	18.0	14.8
JC32	JS32	12.7	25.4	50.8	61.0	20.8	19.4
JC36	JS36	12.7	28.6	57.2	80.0	28.7	22.6