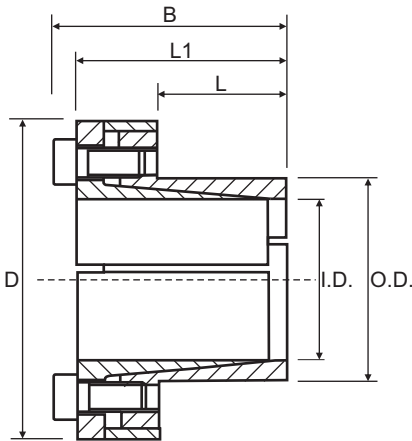


CAL3 (Self-Centering)

Consists of two conical pieces and a spacer. It has minimum overall dimensions in virtue of the reduced thickness of the cones; so, CAL3 is suitable for the applications where small hubs are used. It is recommended for medium to high torques and is self-centering. CAL3 guarantees a very precise axial positioning, as no axial displacement of the hub occurs during the assembly operation. Available for shaft diameters from 6 to 130 mm.

Characteristics

Medium-high torque
Restricted hub diameter
Quick installation
Very low surface pressure



Part No.	I.D.	O.D.	L	L1	B	D	Torque Nm	Axial Force N
CAL3--6/14	6	14	10	21	24	25	12	4000
CAL3--7/15	7	15	12	25	29	27	26	7000
CAL3--8/15	8	15	12	25	29	27	30	7000
CAL3--9/16	9	16	14	26	30	28	44	10000
CAL3--10/16	10	16	14	26	30	28	49	10000
CAL3--11/18	11	18	14	26	30	32	54	10000
CAL3--12/18	12	18	14	26	30	32	59	10000
CAL3--13/23	13	23	14	26	30	38	64	10000
CAL3--14/23	14	23	14	26	30	38	69	10000
CAL3--15/24	15	24	16	36	42	45	128	17000
CAL3--16/24	16	24	16	36	42	45	136	17000
CAL3--17/26	17	26	18	38	44	47	193	23000
CAL3--18/26	18	26	18	38	44	47	205	23000
CAL3--19/27	19	27	18	38	44	49	216	23000
CAL3--20/28	20	28	18	38	44	50	227	23000
CAL3--22/32	22	32	25	45	51	54	250	23000
CAL3--24/34	24	34	25	45	51	56	273	23000
CAL3--25/34	25	34	25	45	51	56	284	23000
CAL3--28/39	28	39	25	45	51	61	478	34000
CAL3--30/41	30	41	25	45	51	62	512	34000
CAL3--32/43	32	43	25	45	51	65	546	34000
CAL3--35/47	35	47	32	52	58	69	796	45000
CAL3--38/50	38	50	32	52	58	72	864	45000
CAL3--40/53	40	53	32	52	58	75	910	45000
CAL3--42/55	42	55	32	52	58	78	955	45000
CAL3--45/59	45	59	45	70	78	86	1891	84000
CAL3--48/62	48	62	45	70	78	87	2017	84000
CAL3--50/65	50	65	45	70	78	92	2101	84000
CAL3--55/71	55	71	55	80	88	98	2600	95000
CAL3--60/77	60	77	55	80	88	104	2836	95000
CAL3--65/84	65	84	55	80	88	111	3073	95000
CAL3--70/90	70	90	65	96	106	119	5254	150000
CAL3--75/95	75	95	65	96	106	126	5630	150000
CAL3--80/100	80	100	65	96	106	131	8006	200000
CAL3--85/106	85	106	65	96	106	137	8507	200000
CAL3--90/112	90	112	65	96	106	144	9007	200000
CAL3--95/120	95	120	65	96	106	149	11092	234000
CAL3--100/125	100	125	65	96	106	154	15012	300000
CAL3--110/140	110	140	90	128	140	180	16029	291000
CAL3--120/155	120	155	90	128	140	198	17486	291000
CAL3--130/165	130	165	90	128	140	208	25257	389000

All dimensions in mm unless otherwise stated

Torque = Maximum transmittable torque when axial force is zero.

Axial Force = Maximum axial force when transmittable torque is zero.

For CAL3 use the following tolerances

h8 for the shaft

H8 for the hub

Locking Bush Conversion Chart

SIT (CAL)	TOLLOK (TLK)	Lovejoy (SLD)	MAV	RINGFEDER (RFN)	RINGBLOK	BIKON	COMPOMAC (Conex)	KTR (Clampex)
CAL1	200	1500	2005	7012	1120	4000	A	100
CAL2	300	350	3003	8006	1060	5000	C	150
CAL3	110	1900	5061	7110.1	1100	8000	B	250
CAL4	450	2600	4061	7005	1800	1012	F	400
CAL5A	130		6901	7004	1300.1	7000A	D	200
CAL5B	131		6902	7007	1300.2	7000B	E	201
CAL6	132	1850 1350	1062	7013.0 7003	1710	1003	DS	203
CAL7	133	1750 1450	1061	7013.1 7006	1720	1006	ES	206
CAL8	134		3061		2400	1506	EP	225
CAL9	250		3505		1500C	5500SP	H	125
CAL10	500		1004	7020	1600	9500	M	700
CAL11S	603	900	2008	4071	2200.01	1029.71	SD	603
CAL12S	139		4005	9009	1000	4500	L	90
CAL13S	250L		3705		1500	5500S	I	125.1
CAL15	350			7061				105

External diameters and torque ratings may vary between suppliers

