

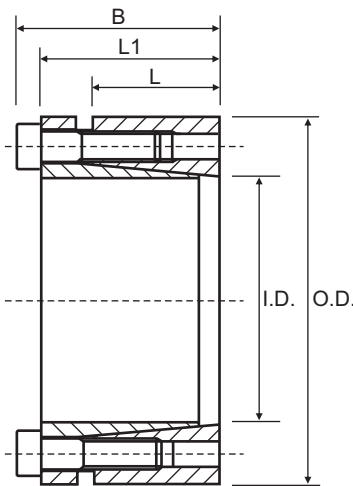


CAL5A (Self-Centering)

Consists of one inside and one outside cone ring, which are joined by a set of screws. It is suitable for high torques and is self-centering. Applications which require a very precise axial positioning are not recommended, owing to a small axial displacement of the hub during the assembly operation. Available for shaft diameters from 18 to 220 mm.

Characteristics

High torque
Economical
Quick installation



Part No.	I.D.	O.D.	L	L1	B	Torque Nm	Axial Force N
CAL5A-18/47*	18	47	26	41	47	490	54000
CAL5A-19/47*	19	47	26	43	49	510	54000
CAL5A-20/47	20	47	26	43	49	547	55000
CAL5A-22/47	22	47	26	43	49	602	55000
CAL5A-24/50	24	50	26	43	49	657	55000
CAL5A-25/50	25	50	26	43	49	684	55000
CAL5A-28/55	28	55	26	43	49	766	55000
CAL5A-30/55	30	55	26	43	49	821	55000
CAL5A-32/60	32	60	26	43	49	1313	82000
CAL5A-35/60	35	60	26	43	49	1436	82000
CAL5A-38/65	38	65	26	43	49	1559	82000
CAL5A-40/65	40	65	26	43	49	1641	82000
CAL5A-42/75	42	75	30	52	60	2123	101000
CAL5A-45/75	45	75	30	52	60	2275	101000
CAL5A-48/80	48	80	30	52	60	2426	101000
CAL5A-50/80	50	80	30	52	60	2527	101000
CAL5A-55/85	55	85	30	52	60	4170	152000
CAL5A-60/90	60	90	30	52	60	4549	152000
CAL5A-65/95	65	95	30	52	60	4928	152000
CAL5A-70/110	70	110	40	57	67	6555	187000
CAL5A-75/115	75	115	40	57	67	7023	187000
CAL5A-80/120	80	120	40	57	67	7491	187000
CAL5A-85/125	85	125	40	57	67	9096	214000
CAL5A-90/130	90	130	40	57	67	9631	214000
CAL5A-95/135	95	135	40	57	67	12708	268000
CAL5A-100/145	100	145	46	66	78	13634	273000
CAL5A-110/155	110	155	45	68	80	17931	326000
CAL5A-120/165	120	165	45	68	80	24452	408000
CAL5A-130/180	130	180	45	68	80	31787	489000
CAL5A-140/190	140	190	50	76	90	39141	559000
CAL5A-150/200	150	200	50	76	90	50325	671000
CAL5A-160/210	160	210	50	76	90	53680	671000
CAL5A-170/225	170	225	50	76	90	66540	783000
CAL5A-180/235	180	235	50	76	90	70455	783000
CAL5A-190/250*	190	250	50	76	90	76000	802000
CAL5A-200/260*	200	260	50	76	90	80000	802000
CAL5A-220/285*	220	285	64	90	106	98000	891000

Torque = Maximum transmittable torque when axial force is zero.

Axial Force = Maximum axial force when transmittable torque is zero.

For CAL5A use the following tolerances

h8 for the shaft
H8 for the hub

* Discontinued size, Limited stock available.
All dimensions in mm unless otherwise stated

Locking Bush Conversion Chart

SIT (CAL)	TOLLOK (TLK)	Lovejoy (SLD)	MAV	RINGFEDER (RFN)	RINGBLOK	BIKON	COMPOMAC (Conex)	KTR (Clampex)
CAL1	200	1500	2005	7012	1120	4000	A	100
CAL2	300	350	3003	8006	1060	5000	C	150
CAL3	110	1900	5061	7110.1	1100	8000	B	250
CAL4	450	2600	4061	7005	1800	1012	F	400
CAL5A	130		6901	7004	1300.1	7000A	D	200
CAL5B	131		6902	7007	1300.2	7000B	E	201
CAL6	132	1850 1350	1062	7013.0 7003	1710	1003	DS	203
CAL7	133	1750 1450	1061	7013.1 7006	1720	1006	ES	206
CAL8	134		3061		2400	1506	EP	225
CAL9	250		3505		1500C	5500SP	H	125
CAL10	500		1004	7020	1600	9500	M	700
CAL11S	603	900	2008	4071	2200.01	1029.71	SD	603
CAL12S	139		4005	9009	1000	4500	L	90
CAL13S	250L		3705		1500	5500S	I	125.1
CAL15	350			7061				105

External diameters and torque ratings may vary between suppliers

