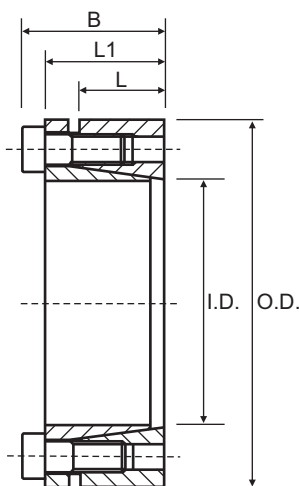


CAL12S (Self-Centering)

Consists of one inside and one outside cone ring, which are joined by a set of screws. It is suitable for medium to low torques and is self-centering. Available for shaft diameters from 18 to 90 mm.

Characteristics

Medium-low torque
Economical
Quick installation



Part No.	I.D.	O.D.	L	L1	B	Torque Nm	Axial Force N
CAL12S-18/40	18	40	12	20	24	210	24000
CAL12S-19/41	19	41	12	20	24	220	24000
CAL12S-20/42	20	42	12	20	24	270	28000
CAL12S-22/44	22	44	12	20	24	300	28000
CAL12S-24/46	24	46	12	20	24	330	28000
CAL12S-25/47	25	47	12	20	24	340	28000
CAL12S-28/50	28	50	12	20	24	500	36000
CAL12S-30/52	30	52	12	20	24	530	36000
CAL12S-32/54	32	54	12	20	24	570	36000
CAL12S-35/57	35	57	16	24	28	690	40000
CAL12S-36/58	36	58	16	24	28	710	40000
CAL12S-38/60	38	60	16	24	28	830	44000
CAL12S-40/62	40	62	16	24	28	870	44000
CAL12S-42/70	42	70	19	30	36	1530	73000
CAL12S-45/73	45	73	19	30	36	1640	73000
CAL12S-48/76	48	76	19	30	36	1750	73000
CAL12S-50/78	50	78	19	30	36	1820	73000
CAL12S-55/83	55	83	19	30	36	2000	73000
CAL12S-56/84	56	84	19	30	36	2040	73000
CAL12S-60/88	60	88	19	30	36	2460	82000
CAL12S-63/91	63	91	19	30	36	2580	82000
CAL12S-65/93	65	93	19	30	36	2660	82000
CAL12S-70/105	70	105	23	37	45	4720	135000
CAL12S-75/110	75	110	23	37	45	5050	135000
CAL12S-80/115	80	115	23	37	45	5390	135000
CAL12S-85/120	85	120	23	37	45	5730	135000
CAL12S-90/125	90	125	23	37	45	7580	169000

All dimensions in mm unless otherwise stated

Torque = Maximum transmittable torque when axial force is zero.

Axial Force = Maximum axial force when transmittable torque is zero.

For CAL12S use the following tolerances

h8 for the shaft

H8 for the hub

Locking Bush Conversion Chart

SIT (CAL)	TOLLOK (TLK)	Lovejoy (SLD)	MAV	RINGFEDER (RFN)	RINGBLOK	BIKON	COMPOMAC (Conex)	KTR (Clampex)
CAL1	200	1500	2005	7012	1120	4000	A	100
CAL2	300	350	3003	8006	1060	5000	C	150
CAL3	110	1900	5061	7110.1	1100	8000	B	250
CAL4	450	2600	4061	7005	1800	1012	F	400
CAL5A	130		6901	7004	1300.1	7000A	D	200
CAL5B	131		6902	7007	1300.2	7000B	E	201
CAL6	132	1850 1350	1062	7013.0 7003	1710	1003	DS	203
CAL7	133	1750 1450	1061	7013.1 7006	1720	1006	ES	206
CAL8	134		3061		2400	1506	EP	225
CAL9	250		3505		1500C	5500SP	H	125
CAL10	500		1004	7020	1600	9500	M	700
CAL11S	603	900	2008	4071	2200.01	1029.71	SD	603
CAL12S	139		4005	9009	1000	4500	L	90
CAL13S	250L		3705		1500	5500S	I	125.1
CAL15	350			7061				105

External diameters and torque ratings may vary between suppliers

