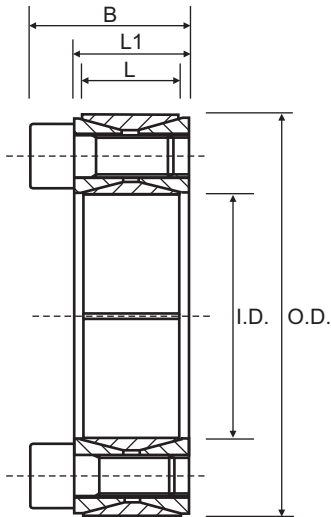


**Characteristics**  
 Medium-high torque  
 Wide tolerances  
 Easy dismantling



**Torque** = Maximum transmittable torque when axial force is zero.  
**Axial Force** = Maximum axial force when transmittable torque is zero.

**When using more than one CAL1 unit, the total transmittable torque is as follows:**

- 1 unit: Torque = Torque in table
- 2 unit: Torque = Torque in table X 1.9
- 3 unit: Torque = Torque in table X 2.7

**For CAL1 use the following tolerances**  
 h11 for the shaft  
 H11 for the hub

## CAL1 (Not Self-Centering)

Cone clamping unit consists of four pieces with two inside double-cone rings joined through a set of tightening screws. It is recommended for medium to high torques and although it is not self-centering, it can be easily assembled and disassembled. Available for shaft diameters from 20 to 900 mm.

Part No.	I.D.	O.D.	L	L1	B	Torque Nm	Axial Force N
CAL1-20/47	20	47	17	20	26	288	29000
CAL1-22/47	22	47	17	20	26	317	29000
CAL1-24/50	24	50	17	20	26	345	29000
CAL1-25/50	25	50	17	20	26	360	29000
CAL1-28/55	28	55	17	20	26	498	36000
CAL1-30/55	30	55	17	20	26	533	36000
CAL1-32/60	32	60	17	20	26	676	42000
CAL1-35/60	35	60	17	20	26	739	42000
CAL1-38/65	38	65	17	20	26	928	49000
CAL1-40/65	40	65	17	20	26	977	49000
CAL1-42/75	42	75	20	24	32	1587	76000
CAL1-45/75	45	75	20	24	32	1701	76000
CAL1-48/80	48	80	20	24	32	1814	76000
CAL1-50/80	50	80	20	24	32	1889	76000
CAL1-55/85	55	85	20	24	32	2397	87000
CAL1-60/90	60	90	20	24	32	2615	87000
CAL1-65/95	65	95	20	24	32	3204	99000
CAL1-70/110	70	110	24	28	38	4589	131000
CAL1-75/115	75	115	24	28	38	4917	131000
CAL1-80/120	80	120	24	28	38	5245	131000
CAL1-85/125	85	125	24	28	38	6290	148000
CAL1-90/130	90	130	24	28	38	6600	148000
CAL1-95/135	95	135	24	28	38	7819	165000
CAL1-100/145	100	145	26	33	45	9703	194000
CAL1-110/155	110	155	26	33	45	10673	194000
CAL1-120/165	120	165	26	33	45	13262	221000
CAL1-130/180	130	180	34	38	50	17850	275000
CAL1-140/190	140	190	34	38	50	21089	301000
CAL1-150/200	150	200	34	38	50	24586	328000
CAL1-160/210	160	210	34	38	50	28343	354000
CAL1-170/225	170	225	38	44	58	33541	395000
CAL1-180/235	180	235	38	44	58	38636	429000
CAL1-190/250	190	250	46	52	66	47337	498000
CAL1-200/260	200	260	46	52	66	53261	533000
CAL1-220/285	220	285	50	56	72	68790	625000
CAL1-240/305	240	305	50	56	72	86127	718000
CAL1-260/325	260	325	50	56	72	105229	809000
CAL1-280/355	280	355	60	66	84	128456	918000
CAL1-300/375	300	375	60	66	84	154066	1027000

Sizes up to CAL1-900/1010 available on request  
 All dimensions in mm unless otherwise stated

## Locking Bush Conversion Chart

SIT (CAL)	TOLLOK (TLK)	Lovejoy (SLD)	MAV	RINGFEDER (RFN)	RINGBLOK	BIKON	COMPOMAC (Conex)	KTR (Clampex)
<b>CAL1</b>	200	1500	2005	7012	1120	4000	A	100
<b>CAL2</b>	300	350	3003	8006	1060	5000	C	150
<b>CAL3</b>	110	1900	5061	7110.1	1100	8000	B	250
<b>CAL4</b>	450	2600	4061	7005	1800	1012	F	400
<b>CAL5A</b>	130		6901	7004	1300.1	7000A	D	200
<b>CAL5B</b>	131		6902	7007	1300.2	7000B	E	201
<b>CAL6</b>	132	1850 1350	1062	7013.0 7003	1710	1003	DS	203
<b>CAL7</b>	133	1750 1450	1061	7013.1 7006	1720	1006	ES	206
<b>CAL8</b>	134		3061		2400	1506	EP	225
<b>CAL9</b>	250		3505		1500C	5500SP	H	125
<b>CAL10</b>	500		1004	7020	1600	9500	M	700
<b>CAL11S</b>	603	900	2008	4071	2200.01	1029.71	SD	603
<b>CAL12S</b>	139		4005	9009	1000	4500	L	90
<b>CAL13S</b>	250L		3705		1500	5500S	I	125.1
<b>CAL15</b>	350			7061				105

External diameters and torque ratings may vary between suppliers

