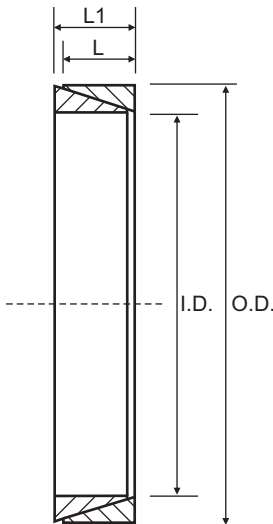


CAL2 (Not Self-Centering)

Consists of two cone rings and must be equipped with a fastening flange, usually manufactured by the customer. The number of locking screws depends on the torque to be transmitted. It is not self-centering. CAL2 requires very small axial installation dimensions. Up to 4 units can be arranged behind each other, allowing high torques to be transmitted. Available for shaft diameters from 6 - 320 mm.

Characteristics

Medium low torque
 Restricted radial encumbrance
 Quick installation
 Economical



Torque = Maximum transmittable torque when axial force is zero.

Axial Force = Maximum axial force when transmittable torque is zero.

When using more than one CAL2 unit, the total transmittable torque is as follows:

- 1 unit: Torque = Torque in table
- 2 unit: Torque = Torque in table X 1.55
- 3 unit: Torque = Torque in table X 1.85
- 4 unit: Torque = Torque in table X 2.02

For CAL2 use the following tolerances

h6 for the shaft - H7 for the hub
 (up to 40mm I.D.)
 h8 for the shaft - H8 for the hub
 (over 42mm I.D.)

Part No.	I.D.	O.D.	L	L1	Torque Nm	Axial Force N
CAL2-6/9	6	9	3.7	4.5	3	900
CAL2-7/10	7	10	3.7	4.5	4	1100
CAL2-8/11	8	11	3.7	4.5	5	1300
CAL2-9/12	9	12	3.7	4.5	7	1600
CAL2-10/13	10	13	3.7	4.5	10	2000
CAL2-12/15	12	15	3.7	4.5	12	2000
CAL2-13/16	13	16	3.7	4.5	14	2100
CAL2-14/18	14	18	5.3	6.3	23	3300
CAL2-15/19	15	19	5.3	6.3	27	3600
CAL2-16/20	16	20	5.3	6.3	30	3800
CAL2-17/21	17	21	5.3	6.3	33	3900
CAL2-18/22	18	22	5.3	6.3	48	5300
CAL2-19/24	19	24	5.3	6.3	43	4600
CAL2-20/25	20	25	5.3	6.3	47	4700
CAL2-22/26	22	26	5.3	6.3	61	5600
CAL2-24/28	24	28	5.3	6.3	68	6130
CAL2-25/30	25	30	5.3	6.3	75	6000
CAL2-28/32	28	32	5.3	6.3	101	7200
CAL2-30/35	30	35	5.3	6.3	105	7000
CAL2-32/36	32	36	5.3	6.3	128	8000
CAL2-35/40	35	40	6.0	7.0	171	9800
CAL2-36/42	36	42	6.0	7.0	181	10100
CAL2-38/44	38	44	6.0	7.0	207	10900
CAL2-40/45	40	45	6.6	8.0	249	12500
CAL2-42/48	42	48	6.6	8.0	278	13200
CAL2-45/52	45	52	8.6	10.0	409	18200
CAL2-48/55	48	55	8.6	10.0	455	19000
CAL2-50/57	50	57	8.6	10.0	480	19200
CAL2-55/62	55	62	8.6	10.0	601	21800
CAL2-56/64	56	64	10.4	12.0	750	26800
CAL2-60/68	60	68	10.4	12.0	883	29400
CAL2-63/71	63	71	10.4	12.0	1005	31900
CAL2-65/73	65	73	10.4	12.0	1044	32100
CAL2-70/79	70	79	12.2	14.0	1392	39800
CAL2-71/80	71	80	12.2	14.0	1491	42000
CAL2-75/84	75	84	12.2	14.0	1628	43400
CAL2-80/91	80	91	15.0	17.0	2240	56000
CAL2-85/96	85	96	15.0	17.0	2593	61000
CAL2-90/101	90	101	15.0	17.0	2864	63600
CAL2-95/106	95	106	15.0	17.0	3153	66400
CAL2-100/114	100	114	18.7	21.0	4433	88700
CAL2-110/124	110	124	18.7	21.0	4999	90900
CAL2-120/134	120	134	18.7	21.0	5529	92200
CAL2-130/148	130	148	25.3	28.0	8720	134000
CAL2-140/158	140	158	25.3	28.0	10127	145000
CAL2-150/168	150	168	25.3	28.0	11750	157000

Sizes up to CAL2-320/360 available on request.
 All dimensions in mm unless otherwise stated

Locking Bush Conversion Chart

SIT (CAL)	TOLLOK (TLK)	Lovejoy (SLD)	MAV	RINGFEDER (RFN)	RINGBLOK	BIKON	COMPOMAC (Conex)	KTR (Clampex)
CAL1	200	1500*	2005	7012	1120	4000	A	100
CAL2	300		3003	8006	1060	5000	C	150
CAL3	110	1900*	5061	7110.1	1100	8000	B*	250
CAL4	450	2600*	4061	7005	1800	1012	F*	400
CAL5A	130		6901	7004	1300.1	7000A	D	200
CAL5B	131		6902	7007	1300.2	7000B	E	201
CAL6	132	1850*	1062	7003	1710	1003	DS	203
CAL7	133	1750*	1061	7006	1720	1006	ES	206
CAL8	134		3061		2400	1506	EP	225
CAL9	250*		3505		1500C	5500SP	H	125
CAL10	500		1004*	7020	1600	9500*	M	700
CAL11S	603	900*	2008	4071	2200.01	1029.71	SD	603
CAL12S	139		4005		1000	4500	L	90
CAL13S	250L		3705		1500	5500S	I	125.1
CAL15	350			7061				

* External diameters and torque ratings may vary between suppliers

