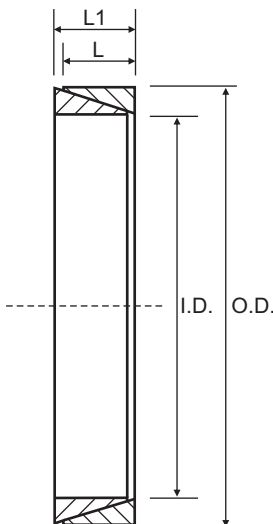


## CAL2 (Not Self-Centering)

Consists of two cone rings and must be equipped with a fastening flange, usually manufactured by the customer. The number of locking screws depends on the torque to be transmitted. It is not self-centering. CAL2 requires very small axial installation dimensions. Up to 4 units can be arranged behind each other, allowing high torques to be transmitted. Available for shaft diameters from 6 - 320 mm.

### Characteristics

Medium low torque  
 Restricted radial encumbrance  
 Quick installation  
 Economical



**Torque** = Maximum transmittable torque when axial force is zero.  
**Axial Force** = Maximum axial force when transmittable torque is zero.

**When using more than one CAL2 unit, the total transmittable torque is as follows:**

- 1 unit: Torque = Torque in table
- 2 unit: Torque = Torque in table X 1.55
- 3 unit: Torque = Torque in table X 1.85
- 4 unit: Torque = Torque in table X 2.02

### For CAL2 use the following tolerances

h6 for the shaft - H7 for the hub  
 (up to 40mm I.D.)  
 h8 for the shaft - H8 for the hub  
 (over 42mm I.D.)

Part No.	I.D.	O.D.	L	L1	Torque Nm	Axial Force N
CAL2-6/9	6	9	3.7	4.5	3	900
CAL2-7/10	7	10	3.7	4.5	4	1100
CAL2-8/11	8	11	3.7	4.5	5	1300
CAL2-9/12	9	12	3.7	4.5	7	1600
CAL2-10/13	10	13	3.7	4.5	10	2000
CAL2-12/15	12	15	3.7	4.5	12	2000
CAL2-13/16	13	16	3.7	4.5	14	2100
CAL2-14/18	14	18	5.3	6.3	23	3300
CAL2-15/19	15	19	5.3	6.3	27	3600
CAL2-16/20	16	20	5.3	6.3	30	3800
CAL2-17/21	17	21	5.3	6.3	33	3900
CAL2-18/22	18	22	5.3	6.3	48	5300
CAL2-19/24	19	24	5.3	6.3	43	4600
CAL2-20/25	20	25	5.3	6.3	47	4700
CAL2-22/26	22	26	5.3	6.3	61	5600
CAL2-24/28	24	28	5.3	6.3	68	6130
CAL2-25/30	25	30	5.3	6.3	75	6000
CAL2-28/32	28	32	5.3	6.3	101	7200
CAL2-30/35	30	35	5.3	6.3	105	7000
CAL2-32/36	32	36	5.3	6.3	128	8000
CAL2-35/40	35	40	6.0	7.0	171	9800
CAL2-36/42	36	42	6.0	7.0	181	10100
CAL2-38/44	38	44	6.0	7.0	207	10900
CAL2-40/45	40	45	6.6	8.0	249	12500
CAL2-42/48	42	48	6.6	8.0	278	13200
CAL2-45/52	45	52	8.6	10.0	409	18200
CAL2-48/55	48	55	8.6	10.0	455	19000
CAL2-50/57	50	57	8.6	10.0	480	19200
CAL2-55/62	55	62	8.6	10.0	601	21800
CAL2-56/64	56	64	10.4	12.0	750	26800
CAL2-60/68	60	68	10.4	12.0	883	29400
CAL2-63/71	63	71	10.4	12.0	1005	31900
CAL2-65/73	65	73	10.4	12.0	1044	32100
CAL2-70/79	70	79	12.2	14.0	1392	39800
CAL2-71/80	71	80	12.2	14.0	1491	42000
CAL2-75/84	75	84	12.2	14.0	1628	43400
CAL2-80/91	80	91	15.0	17.0	2240	56000
CAL2-85/96	85	96	15.0	17.0	2593	61000
CAL2-90/101	90	101	15.0	17.0	2864	63600
CAL2-95/106	95	106	15.0	17.0	3153	66400
CAL2-100/114	100	114	18.7	21.0	4433	88700
CAL2-110/124	110	124	18.7	21.0	4999	90900
CAL2-120/134	120	134	18.7	21.0	5529	92200
CAL2-130/148	130	148	25.3	28.0	8720	134000
CAL2-140/158	140	158	25.3	28.0	10127	145000
CAL2-150/168	150	168	25.3	28.0	11750	157000

Sizes up to CAL2-320/360 available on request.  
 All dimensions in mm unless otherwise stated

## Locking Bush Conversion Chart

SIT (CAL)	TOLLOK (TLK)	Lovejoy (SLD)	MAV	RINGFEDER (RFN)	RINGBLOK	BIKON	COMPOMAC (Conex)	KTR (Clampex)
<b>CAL1</b>	200	1500	2005	7012	1120	4000	A	100
<b>CAL2</b>	300	350	3003	8006	1060	5000	C	150
<b>CAL3</b>	110	1900	5061	7110.1	1100	8000	B	250
<b>CAL4</b>	450	2600	4061	7005	1800	1012	F	400
<b>CAL5A</b>	130		6901	7004	1300.1	7000A	D	200
<b>CAL5B</b>	131		6902	7007	1300.2	7000B	E	201
<b>CAL6</b>	132	1850 1350	1062	7013.0 7003	1710	1003	DS	203
<b>CAL7</b>	133	1750 1450	1061	7013.1 7006	1720	1006	ES	206
<b>CAL8</b>	134		3061		2400	1506	EP	225
<b>CAL9</b>	250		3505		1500C	5500SP	H	125
<b>CAL10</b>	500		1004	7020	1600	9500	M	700
<b>CAL11S</b>	603	900	2008	4071	2200.01	1029.71	SD	603
<b>CAL12S</b>	139		4005	9009	1000	4500	L	90
<b>CAL13S</b>	250L		3705		1500	5500S	I	125.1
<b>CAL15</b>	350			7061				105

External diameters and torque ratings may vary between suppliers

