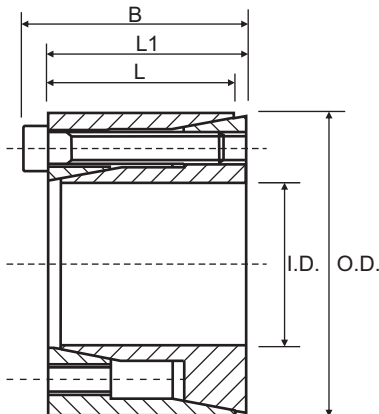


CAL15 (Self-Centering)

Consists of one inside and one outside cone ring, which are joined by a set of screws. It is suitable for medium to high torques and is self-centering. The CAL15 is a very small and light weight design. Applications which require a very precise axial positioning are not recommended, owing to a small axial displacement of the hub during the assembly operation. Available for shaft diameters from 5 to 50 mm.

Characteristics

Medium-low torque
Easy mounting
Very quick installation
Few clamping screws



Part No.	I.D.	O.D.	L	L1	B	Torque Nm	Axial Force N
CAL15--5/16	5	16	10.5	11.0	13.5	7	3000
CAL15--6/16	6	16	10.5	11.0	13.5	9	3000
CAL15--6.35/16	6.35	16	10.5	11.0	13.5	9	3000
CAL15--7/17	7	17	10.5	11.0	13.5	10	3000
CAL15--8/18	8	18	10.5	11.0	13.5	11	3000
CAL15--9/20	9	20	12.5	13.0	15.0	17	3000
CAL15--9.53/20	9.53	20	12.5	13.0	15.0	17	3000
CAL15-10/20	10	20	12.5	13.0	15.5	19	3000
CAL15-11/22	11	22	12.5	13.0	15.5	21	3000
CAL15-12/22	12	22	12.5	13.0	15.5	23	3000
CAL15-14/26	14	26	16.5	17.0	20.0	40	6000
CAL15-15/28	15	28	16.5	17.0	20.0	43	6000
CAL15-16/32	16	32	16.5	17.0	21.0	80	10000
CAL15-17/35	17	35	20.5	21.0	25.0	85	10000
CAL15-18/35	18	35	20.5	21.0	25.0	90	10000
CAL15-19/35	19	35	20.5	21.0	25.0	95	10000
CAL15-20/38	20	38	20.5	21.0	26.0	165	16000
CAL15-22/40	22	40	20.5	21.0	26.0	180	16000
CAL15-24/47	24	47	25.0	26.0	32.0	280	23000
CAL15-25/47	25	47	25.0	26.0	32.0	290	23000
CAL15-25.4/47*	25.4	47	25.0	26.0	32.0	304	24000
CAL15-28/50	28	50	25.0	26.0	32.0	485	35000
CAL15-30/55	30	55	25.0	26.0	32.0	520	35000
CAL15-32/55	32	55	25.0	26.0	32.0	555	35000
CAL15-35/60	35	60	30.0	31.0	37.0	810	46000
CAL15-38/65	38	65	30.0	31.0	37.0	880	46000
CAL15-40/65	40	65	30.0	31.0	37.0	925	46000
CAL15-42/75	42	75	35.0	36.0	44.0	1350	64000
CAL15-45/75	45	75	35.0	36.0	44.0	1450	64000
CAL15-48/80	48	80	35.0	36.0	44.0	2050	85000
CAL15-50/80	50	80	35.0	36.0	44.0	2140	85000

Torque = Maximum transmittable torque when axial force is zero.

Axial Force = Maximum axial force when transmittable torque is zero.

For CAL15 use the following tolerances

h8 for the shaft

H8 for the hub

* Discontinued size, Limited stock available.
All dimensions in mm unless otherwise stated

Locking Bush Conversion Chart

SIT (CAL)	TOLLOK (TLK)	Lovejoy (SLD)	MAV	RINGFEDER (RFN)	RINGBLOK	BIKON	COMPOMAC (Conex)	KTR (Clampex)
CAL1	200	1500	2005	7012	1120	4000	A	100
CAL2	300	350	3003	8006	1060	5000	C	150
CAL3	110	1900	5061	7110.1	1100	8000	B	250
CAL4	450	2600	4061	7005	1800	1012	F	400
CAL5A	130		6901	7004	1300.1	7000A	D	200
CAL5B	131		6902	7007	1300.2	7000B	E	201
CAL6	132	1850 1350	1062	7013.0 7003	1710	1003	DS	203
CAL7	133	1750 1450	1061	7013.1 7006	1720	1006	ES	206
CAL8	134		3061		2400	1506	EP	225
CAL9	250		3505		1500C	5500SP	H	125
CAL10	500		1004	7020	1600	9500	M	700
CAL11S	603	900	2008	4071	2200.01	1029.71	SD	603
CAL12S	139		4005	9009	1000	4500	L	90
CAL13S	250L		3705		1500	5500S	I	125.1
CAL15	350			7061				105

External diameters and torque ratings may vary between suppliers

