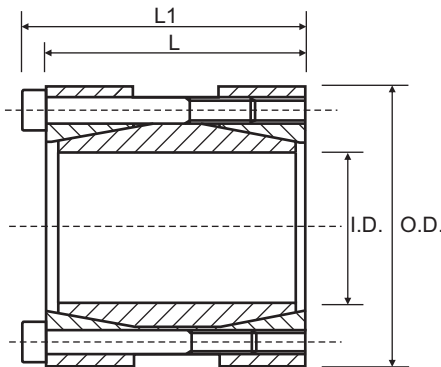


CAL10 (Rigid Coupling)

Consists of one inside and two outside cone rings, which are joined by a set of screws. This locking device is designed as a rigid coupling to join the shafts of the same size. CAL10 is also available to suit shafts of different sizes on request. Available for shaft diameters from 16 to 80 mm.

Characteristics

Medium high torque
Few tightening screws
Easy installation
Economical



Part No.	I.D.	O.D.	L	L1	Torque Nm	Axial Force N
CAL10-16/45*	16	45	50	56	190	24000
CAL10-17/50	17	50	50	56	179	21000
CAL10-18/50	18	50	50	56	190	21000
CAL10-19/50	19	50	50	56	200	21000
CAL10-20/50	20	50	50	56	211	21000
CAL10-22/55	22	55	60	66	347	32000
CAL10-24/55	24	55	60	66	379	32000
CAL10-25/55	25	55	60	66	394	32000
CAL10-28/60	28	60	60	66	442	32000
CAL10-30/60	30	60	60	66	473	32000
CAL10-32/63	32	63	60	66	505	32000
CAL10-32/75*	32	75	60	68	720	45000
CAL10-35/75	35	75	75	83	682	39000
CAL10-38/75	38	75	75	83	741	39000
CAL10-40/75	40	75	75	83	780	39000
CAL10-42/78	42	78	75	83	819	39000
CAL10-42/90*	42	90	75	83	1400	67000
CAL10-45/85	45	85	75	83	819	39000
CAL10-48/90	48	90	85	93	1405	59000
CAL10-50/90	50	90	85	93	1463	59000
CAL10-55/94	55	94	85	93	2147	78000
CAL10-55/105*	55	105	85	93	2470	90000
CAL10-60/100	60	100	85	93	2343	78000
CAL10-65/105	65	105	85	93	2538	78000
CAL10-70/115	70	115	100	110	3239	93000
CAL10-70/125*	70	125	100	110	3770	107000
CAL10-75/120	75	120	100	110	3471	93000
CAL10-80/125	80	125	100	110	4938	123000

* Discontinued size, Limited stock available
All dimensions in mm unless otherwise stated

Torque = Maximum transmittable torque when axial force is zero.

Axial Force = Maximum axial force when transmittable torque is zero.

For CAL10 use the following tolerances
h8 for the shaft

Locking Bush Conversion Chart

SIT (CAL)	TOLLOK (TLK)	Lovejoy (SLD)	MAV	RINGFEDER (RFN)	RINGBLOK	BIKON	COMPOMAC (Conex)	KTR (Clampex)
CAL1	200	1500	2005	7012	1120	4000	A	100
CAL2	300	350	3003	8006	1060	5000	C	150
CAL3	110	1900	5061	7110.1	1100	8000	B	250
CAL4	450	2600	4061	7005	1800	1012	F	400
CAL5A	130		6901	7004	1300.1	7000A	D	200
CAL5B	131		6902	7007	1300.2	7000B	E	201
CAL6	132	1850 1350	1062	7013.0 7003	1710	1003	DS	203
CAL7	133	1750 1450	1061	7013.1 7006	1720	1006	ES	206
CAL8	134		3061		2400	1506	EP	225
CAL9	250		3505		1500C	5500SP	H	125
CAL10	500		1004	7020	1600	9500	M	700
CAL11S	603	900	2008	4071	2200.01	1029.71	SD	603
CAL12S	139		4005	9009	1000	4500	L	90
CAL13S	250L		3705		1500	5500S	I	125.1
CAL15	350			7061				105

External diameters and torque ratings may vary between suppliers

