

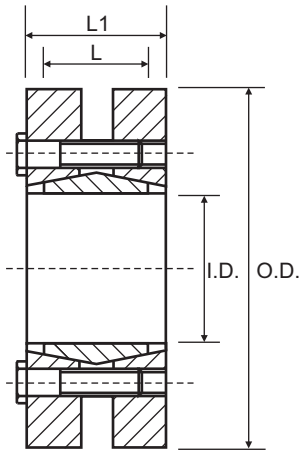


CAL11S (Shrink Disc)

Consists of one inside and two outside cone rings, which are joined by a set of screws. It is suitable for medium high torques. CAL11S shrink disc is used for clamping a hollow shaft to a standard shaft. Available for hollow shaft diameters from 14 to 480 mm.

Characteristics

Medium-high torque
No shaft-hub axial movement
Quick installation
Quick dismantling



Part No.	I.D.	O.D.	S.D.	L	L1	Torque Nm	Axial Force N
CAL11S--14/38*	14	38	12	7	11	50	9000
CAL11S--16/41*	16	41	14	11	15	90	13000
CAL11S--18/43*	18	43	15	11	15	90	13000
CAL11S--24/50	24	50	21	14	19.5	250	30000
CAL11S--30/60	30	60	26	16	21.5	380	30000
CAL11S--36/72	36	72	31	18	23.5	630	60000
CAL11S--44/80	44	80	36	20	25.5	860	80000
CAL11S--50/90	50	90	42	22	27.5	1380	90000
CAL11S--55/100	55	100	48	23	30.5	1880	100000
CAL11S--62/110	62	110	52	23	30.5	2250	120000
CAL11S--68/115	68	115	60	23	30.5	3150	120000
CAL11S--75/138	75	138	65	25	32.5	3950	160000
CAL11S--80/145	80	145	70	25	32.5	4600	160000
CAL11S--85/155*	85	155	75	30	39	7400	216000
CAL11S--90/155	90	155	75	30	39	7250	210000
CAL11S-100/170	100	170	80	34	44	9000	240000
CAL11S-110/185	110	185	85	39	50	10800	260000
CAL11S-125/215	125	215	95	42	54	15000	350000
CAL11S-140/230	140	230	105	46	60.5	20100	430000
CAL11S-155/265	155	265	115	50	64.5	28000	510000
CAL11S-165/290	165	290	125	56	71	39000	660000
CAL11S-175/300	175	300	135	56	71	45000	680000
CAL11S-185/330	185	330	145	71	86	62000	860000
CAL11S-195/350	195	350	155	71	86	81500	1070000
CAL11S-200/350	200	350	160	71	86	86000	1080000
CAL11S-220/370	220	370	170	88	104	110000	1290000
CAL11S-240-405	240	405	190	92	109	156000	1680000
CAL11S-260/430	260	430	210	103	120	205000	2010000
CAL11S-280/460	280	460	230	114	134	270000	2350000
CAL11S-300/485	300	485	245	122	142	315000	2640000

S.D.: The maximum shaft diameter. Smaller shaft diameters can be used at reduced Torque and Axial Force.

* Discontinued size, Limited stock available
All dimensions in mm unless otherwise stated

Torque = Maximum transmittable torque when axial force is zero.

Axial Force = Maximum axial force when transmittable torque is zero.

For CAL11S use the following tolerances

From 18 - 30 mm dw H6/j6
From 30 - 50 mm dw H6/h6
From 50 - 80 mm dw H6/g6
From 80 - 500 mm dw H7/g6

Locking Bush Conversion Chart

SIT (CAL)	TOLLOK (TLK)	Lovejoy (SLD)	MAV	RINGFEDER (RFN)	RINGBLOK	BIKON	COMPOMAC (Conex)	KTR (Clampex)
CAL1	200	1500	2005	7012	1120	4000	A	100
CAL2	300	350	3003	8006	1060	5000	C	150
CAL3	110	1900	5061	7110.1	1100	8000	B	250
CAL4	450	2600	4061	7005	1800	1012	F	400
CAL5A	130		6901	7004	1300.1	7000A	D	200
CAL5B	131		6902	7007	1300.2	7000B	E	201
CAL6	132	1850 1350	1062	7013.0 7003	1710	1003	DS	203
CAL7	133	1750 1450	1061	7013.1 7006	1720	1006	ES	206
CAL8	134		3061		2400	1506	EP	225
CAL9	250		3505		1500C	5500SP	H	125
CAL10	500		1004	7020	1600	9500	M	700
CAL11S	603	900	2008	4071	2200.01	1029.71	SD	603
CAL12S	139		4005	9009	1000	4500	L	90
CAL13S	250L		3705		1500	5500S	I	125.1
CAL15	350			7061				105

External diameters and torque ratings may vary between suppliers

