

RTL Torque Limiter

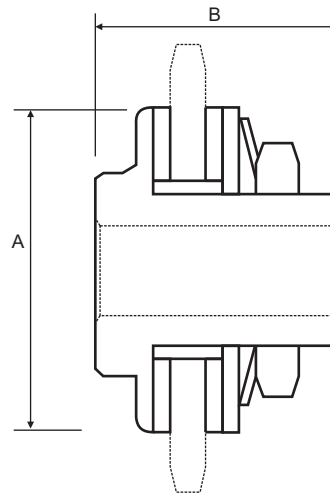
A Torque Limiter is used to limit the torque being transmitted through a drive system by sliding when the torque exceeds the pre-set value. Once the overloading is removed, the device will allow the drive to start working again automatically. The unit is used to prevent damaging the equipment and avoiding costly break downs. The Torque Limiter operates through a spring, mounted upon the friction facing. The sliding torque can be pre-set by adjusting the nut

PERFORMANCE DATA

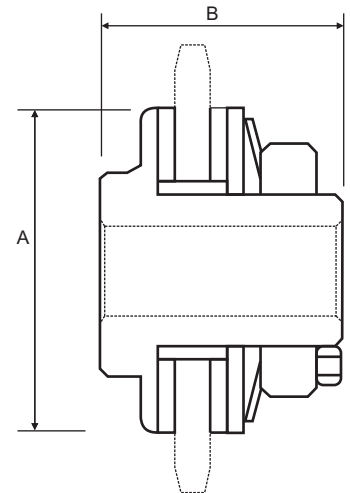


Size	Torque Range (Nm)		Min Bore	Max Bore	A	B
	Min	Max				
RTL50-1	2.9	9.8	8	14	50	29
RTL50-2	6.8	19.6				
RTL65-1	6.8	27.4	10	22	65	48
RTL65-2	13.7	53.9				
RTL89-1	19.6	74.4	17	25	89	62
RTL89-2	34.3	148.9				
RTL127-1	46.0	209.7	20	42	127	76
RTL127-2	88.2	420.4				
RTL178-1	115.6	569.3	30	64	178	98
RTL178-2	223.4	1087.8				

DIMENSIONAL DATA



RTL50-RTL89



RTL127-RTL178

Size	Min. No. of Teeth 06B	Min. No. of Teeth 08B	Min. No. of Teeth 10B	Min. No. of Teeth 12B	Min. No. of Teeth 16B	Min. No. of Teeth 20B	Min. No. of Teeth 24B
RTL50	20	16					
RTL65		20	17				
RTL89		26	21	18	15		
RTL127		35	29	25	19		
RTL178			39	33	26	21	18