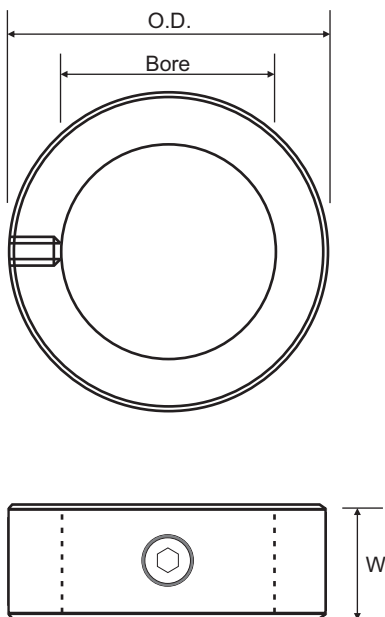


One Piece Solid (Set Screw Type) Metric



Set screw collars are most effective when used on a shaft made of a material that is softer than the set screw. Ruland set screw collars are furnished exclusively with forged socket set screws for greater torque capacity and improved holding power. Forging of the stainless steel set screws has the additional benefit of work hardening, which results in stainless steel with elevated hardness and performance.



Part No.	Bore (mm)	O.D. (mm)	W (mm)	F	SS
MSC-4	4.0	8.0	5.0	✓	✓
MSC-5	5.0	10.0	6.0	✓	✓
MSC-6	6.0	12.0	8.0	✓	✓
MSC-8	8.0	16.0	8.0	✓	✓
MSC-10	10.0	20.0	10.0	✓	✓
MSC-12	12.0	22.0	12.0	✓	✓
MSC-14	14.0	25.0	12.0	✓	✓
MSC-15	15.0	25.0	12.0	✓	✓
MSC-16	16.0	28.0	12.0	✓	✓
MSC-18	18.0	32.0	14.0	^	^
MSC-20	20.0	32.0	14.0	✓	✓
MSC-22	22.0	36.0	14.0	✓	✓
MSC-25	25.0	40.0	16.0	✓	✓
MSC-28	28.0	45.0	16.0	✓	✓
MSC-30	30.0	45.0	16.0	✓	✓
MSC-32	32.0	50.0	16.0	✓	✓
MSC-35	35.0	56.0	16.0	✓	✓
MSC-38	38.0	56.0	16.0	✓	✓
MSC-40	40.0	63.0	18.0	✓	✓
MSC-45	45.0	70.0	18.0	✓	✓
MSC-50	50.0	80.0	18.0	✓	✓

✓ Stocked Size

^ Available on request

Steel - Black Oxide (F)

Cold drawn bar. Hot process black oxide, impregnated with naphthenic oil, centrifugal dried.

Stainless Steel (SS)

Stainless Steel Grade 303 austenitic, non-magnetic bar with a bright finish.

- Forged socket set screws.
- Additional sizes available.

- Bore tolerances:

Bore	Tolerances
All	+ .01mm + .05mm

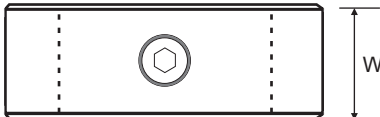
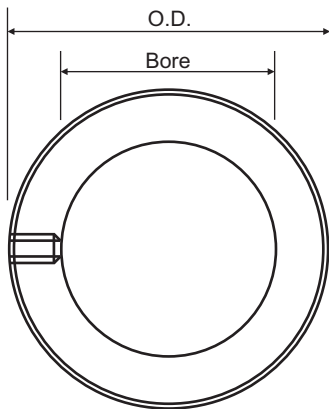
-Width tolerance

All	+ .08mm - .25mm
-----	--------------------

One Piece Solid (Set Screw Type) Inch



Set screw collars are most effective when used on a shaft made of a material that is softer than the set screw. Ruland set screw collars are furnished exclusively with forged socket set screws for greater torque capacity and improved holding power. Forging of the stainless steel set screws has the additional benefit of work hardening, which results in stainless steel with elevated hardness and performance.



Part No.	Bore (in)	O.D. (in)	W (in)	F	A	SS	P
SC-3	0.1875	0.438	0.250	✓	✓	✓	✓
SC-4	0.2500	0.500	0.281	✓	✓	✓	✓
SC-5	0.3125	0.625	0.344	✓	✓	✓	✓
SC-6	0.3750	0.750	0.375	✓	✓	✓	✓
SC-7	0.4375	0.875	0.438	✓	✓	✓	✓
SC-8	0.5000	1.000	0.438	✓	✓	✓	✓
SC-10	0.6250	1.125	0.500	✓	✓	✓	✓
SC-12	0.7500	1.250	0.563	✓	✓	✓	✓
SC-14	0.8750	1.500	0.563	✓		✓	✓*
SC-16	1.0000	1.625	0.625	✓		✓	✓*
SC-18	1.1250	1.750	0.625	✓		✓	✓*
SC-20	1.2500	2.000	0.688	✓		✓	✓*
SC-22	1.3750	2.125	0.750	✓		✓	
SC-24	1.5000	2.250	0.750	✓		✓	✓*
SC-26	1.6250	2.500	0.813	✓		✓	
SC-28	1.7500	2.750	0.875	✓		✓	
SC-32	2.0000	3.000	0.875	✓		✓	

✓ Stocked Size

* Discontinued size, Limited stock available

Steel - Black Oxide (F)

Cold drawn bar. Hot process black oxide, impregnated with naphthenic oil, centrifugal dried.

Aluminium (A)

2024-T351 bar with a bright finish.

Stainless Steel (SS)

Stainless Steel Grade 303 austenitic, non-magnetic bar with a bright finish.

Acetal (P)

Delrin 150E (White) with a plain finish

- Forged socket set screws.
- Additional sizes available.

- Bore tolerances:

Bore	Tolerance
Up to 1"	+ .0005"
	+ .002"

1.1/8" to 2"	+ .0005"
	+ .003"

-Width tolerance:

All	+ .003"
	- .010"