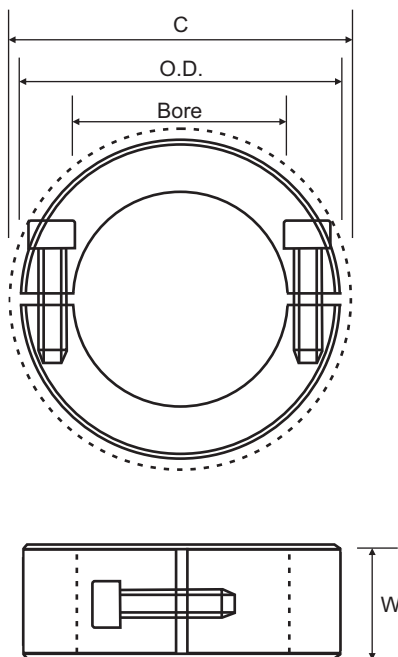




## Two Piece Split (Clamp Type) Metric

Two-piece clamp style collars offer the same benefits of the one-piece collars with additional versatility and convenience. They are easily disassembled, reducing labour and downtime when adjustment, removal or replacement is necessary. Ruland keeps both halves of its two-piece collars together throughout the manufacturing process to assure a perfect match, proper fit, holding power and alignment.



Part No.	Bore (mm)	O.D. (mm)	C (mm)	W (mm)	F	A	SS	P
MSP-4	4.0	16.0	20.8	9.0	✓	✓	✓	✓
MSP-5	5.0	16.0	20.8	9.0	✓	✓	✓	✓
MSP-6	6.0	16.0	20.8	9.0	✓	✓	✓	✓
MSP-8	8.0	18.0	22.4	9.0	✓	✓	✓	✓
MSP-10	10.0	24.0	26.3	9.0	✓	✓	✓	✓
MSP-12	12.0	28.0	32.0	11.0	✓	✓	✓	✓
MSP-14	14.0	30.0	33.7	11.0	✓	✓	✓	
MSP-15	15.0	34.0	39.3	13.0	✓	✓	✓	✓
MSP-16	16.0	34.0	39.3	13.0	✓	✓	✓	✓
MSP-19	19.0	40.0	47.4	15.0	✓	✓	✓	
MSP-20	20.0	40.0	47.4	15.0	✓	✓	✓	✓
MSP-22	22.0	42.0	49.5	15.0	✓	✓	✓	✓
MSP-25	25.0	45.0	52.1	15.0	✓	✓	✓	✓
MSP-28	28.0	48.0	54.7	15.0	✓	✓	✓	✓
MSP-30	30.0	54.0	59.2	15.0	✓	✓	✓	✓
MSP-32	32.0	54.0	59.2	15.0	✓	✓	✓	
MSP-35	35.0	57.0	62.4	15.0	✓	✓	✓	
MSP-38	38.0	60.0	65.6	15.0	✓	✓	✓	
MSP-40	40.0	60.0	65.6	15.0	✓	✓	✓	
MSP-42	42.0	73.0	80.1	19.0	✓	✓	✓	
MSP-45	45.0	73.0	80.1	19.0	✓	✓	✓	
MSP-48	48.0	78.0	84.7	19.0	✓	✓	✓	
MSP-50	50.0	78.0	84.7	19.0	✓	✓	✓	
MSP-55	55.0	82.0	88.8	19.0	✓		^	
MSP-60	60.0	88.0	94.0	19.0	✓		^	
MSP-65	65.0	93.0	99.8	19.0	✓		^	
MSP-70	70.0	98.0	104.5	19.0	✓		^	
MSP-75	75.0	103.0	109.1	19.0	✓		^	
MSP-80	80.0	108.0	113.8	19.0	✓		^	

✓ Stocked Size

^ Available on request

- Does not mar the shaft.
- Single point faced.
- Available with keyways.
- Opposing screws available.
- Additional sizes available.

### -Width tolerance:

All +.08 mm  
-.25 mm

### Steel - Black Oxide (F)

Cold drawn bar. Hot process black oxide, impregnated with naphthenic oil, centrifugal dried.

### Aluminium (A)

2024-T351 bar with a bright finish.

### Stainless Steel (SS)

Stainless Steel Grade 303 austenitic, non-magnetic bar with a bright finish.

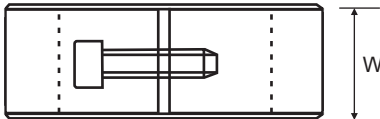
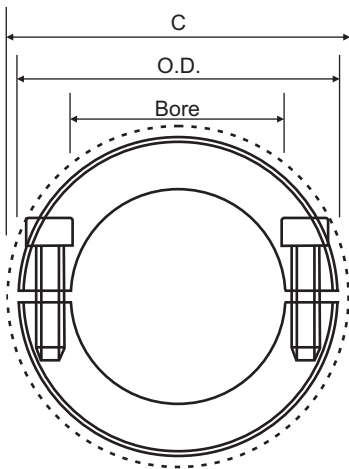
### Acetal (P)

Delrin 150E (White) with a plain finish



## Two Piece Split (Clamp Type) Inch

Two-piece clamp style collars offer the same benefits of the one-piece collars with additional versatility and convenience. They are easily disassembled, reducing labour and downtime when adjustment, removal or replacement is necessary. Ruland keeps both halves of its two-piece collars together throughout the manufacturing process to assure a perfect match, proper fit, holding power and alignment.



Part No.	Bore (in)	O.D. (in)	C (in)	W (in)	F	A	SS	P
SP-2	0.1250	0.625	0.773	0.281	✓	✓	✓	
SP-3	0.1875	0.625	0.773	0.281	✓	✓	✓	✓
SP-4	0.2500	0.625	0.773	0.281	✓	✓	✓	✓
SP-5	0.3125	0.688	0.838	0.281	✓	✓	✓	✓
SP-6	0.3750	0.875	1.027	0.343	✓	✓	✓	✓
SP-7	0.4375	0.938	1.080	0.343	✓	✓	✓	✓
SP-8	0.5000	1.125	1.281	0.406	✓	✓	✓	✓
SP-10	0.6250	1.313	1.500	0.437	✓	✓	✓	✓
SP-12	0.7500	1.500	1.808	0.500	✓	✓	✓	✓
SP-14	0.8750	1.625	1.916	0.500	✓	✓	✓	✓
SP-16	1.0000	1.750	2.032	0.500	✓	✓	✓	✓
SP-18	1.1250	1.875	2.140	0.500	✓	✓	✓	✓
SP-20	1.2500	2.063	2.295	0.500	✓	✓	✓	✓
SP-22	1.3750	2.250	2.465	0.563	✓	✓	✓	✓
SP-24	1.5000	2.375	2.578	0.563	✓	✓	✓	✓
SP-26	1.6250	2.625	2.935	0.688	✓	✓	✓	
SP-28	1.7500	2.750	3.046	0.688	✓	✓	✓	✓*
SP-30	1.8750	2.875	3.160	0.688	✓	✓	✓	✓*
SP-32	2.0000	3.000	3.273	0.688	✓	✓	✓	✓*

✓ Stocked Size

\* Discontinued size, Limited stock available

### Steel - Black Oxide (F)

Cold drawn bar. Hot process black oxide, impregnated with naphthenic oil, centrifugal dried.

### Aluminium (A)

2024-T351 bar with a bright finish.

### Stainless Steel (SS)

Stainless Steel Grade 303 austenitic, non-magnetic bar with a bright finish.

### Acetal (P)

Delrin 150E (White) with a plain finish

- Does not mar the shaft.
- Single point faced.
- Available with keyways.
- Opposing screws available.
- Additional sizes available.

### -Width tolerance:

All +.003"  
-.010"