



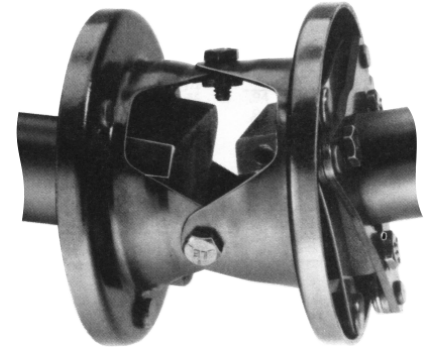
## DELTA FLEX COUPLING

### DELTA FLEX

The unique design, misalignment capability and simple installation, make Deltaflex easily adaptable to special applications. This is an all metal coupling (also available in stainless steel). High misalignment capability means that there is less reactionary load on the rest of the machine.

- Operates smoothly when misaligned.
- No lubrication.
- No backlash.
- Many standard coupling configurations for application versatility.

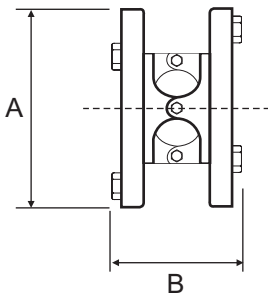
### PERFORMANCE DATA



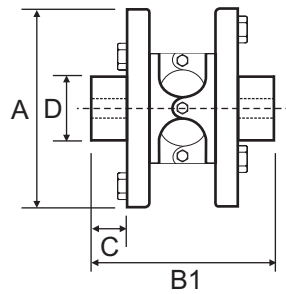
Part No.	Max Bore		Power at 100 RPM kW	Nominal Torque (Nm)	Normal Maximum Speed (RPM)
	Delta Hub	Round Hub			
40	35.0	42.0	0.880	84.0	8000
50	49.0	58.0	2.241	214.0	6000
60	65.0	79.0	4.848	463.0	5000
80	90.0	106.0	11.236	1073.0	4000
100	112.0	132.0	27.089	2587.0	3000

### DIMENSIONAL DATA

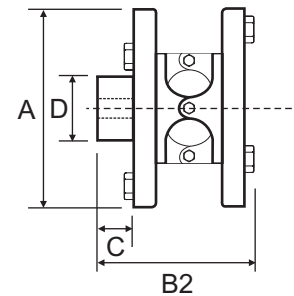
**TYPE 1  
ARRANGEMENT**



**TYPE 2  
ARRANGEMENT**



**TYPE 2A  
ARRANGEMENT**



Part No.	Bore			A	B	B1	B2	C	D
	Min	Max Delta Hub	Max Round Hub						
40	11.2	35.0	42.0	111.3	89.2	140.0	114.6	31.2	65.0
50	11.2	49.0	58.0	157.0	122.7	187.2	154.9	39.9	90.4
60	19.1	65.0	79.0	184.2	158.0	237.0	197.4	48.3	114.3
80	34.9	90.0	106.0	244.3	191.0	295.7	243.3	64.3	149.4
100	44.5	112.0	132.0	323.9	247.4	408.4	327.9	95.3	184.2