



JAW TYPE 'N', 'SWN' COUPLING

'N' TYPE

The most common shaft to shaft jaw coupling around with star shaped spider. Made to industry standard and available in a wide range of bore sizes.

'SWN' TYPE

Shaft to shaft jaw coupling with all of the advantages of the N Series but with the wrap around element and retaining collar.



'N' Type



'SWN' Type

Part No.	Max Bore	Power at 100 RPM kW	Nominal Torque (Nm)			Normal Maximum Speed* N (RPM)
			Rubber Black	Polyurethane		
			80 Sh A	80 Sh A	90/92 Sh A	
N050	16.0	0.029	2.8	-	-	18000
N070	20.0	0.051	4.9	-	-	14000
N075	22.0	0.103	9.8	-	-	11000
N/SWN095	28.0	0.221	21.1	30.0	40.0	8000
N/SWN100	38.0	0.486	46.4	75.0	90.0	7000
N/SWN110	42.0	0.932	89.0	140.0	165.0	5000
N/SWN150	48.0	1.476	141.0	190.0	225.0	5000
N/SWN190	60.0	1.990	190.0	250.0	300.0	5000
N/SWN225	65.0	2.775	265.0	325.0	400.0	4200

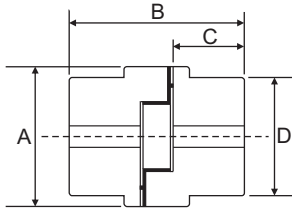
Power at 100 RPM based on Rubber 80 Shore A (Black)

* SWN Normal Maximum Speed of 3600 RPM

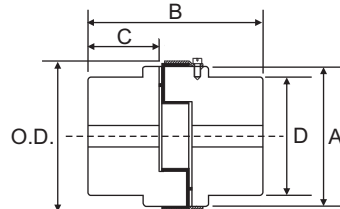


JAW TYPE 'N' & 'SWN' COUPLING

N SERIES
(Standard spider coupling)



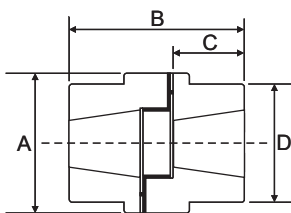
SWN SERIES
(Wrap around element coupling)



Part No.	Bore		A	B	C	D	Collar O.D.
	Min	Max					
N050	6.0	16.0	28.0	46.0	17.0	28.0	-
N070	9.0	20.0	36.0	51.0	19.0	36.0	-
N075	9.0	22.0	45.0	55.0	21.0	45.0	-
N/SWN095	10.0	28.0	54.0	63.0	25.0	49.0	64.0
N/SWN100	10.0	38.0	65.0	88.0	35.0	57.0	78.0
N/SWN110	15.0	42.0	85.0	108.0	43.0	76.0	96.0
N/SWN150	15.0	48.0	96.0	115.0	45.0	80.0	111.0
N/SWN190	20.0	60.0	115.0	133.0	54.0	102.0	130.0
N/SWN225	20.0	65.0	127.0	153.0	64.0	111.0	142.0

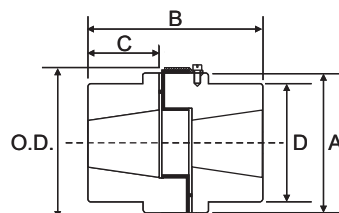
HUBS TO SUIT TAPERED BUSHES

N SERIES
(Standard spider coupling)



Hub Type J Hub Type H

SWN SERIES
(Wrap around element coupling)



Couplings can comprise of any combination of H type or J Type hubs.

Part No.	Bore Max	Taper Bush Size	A	B	C	D	R*	Collar O.D.
N/SWN100	28.0	1108	65.0	63.8	23.6	65.0	29.0	78.0
N/SWN110	32.0	1210	85.0	73.3	27.2	85.0	38.0	96.0
N/SWN150	32.0	1210	96.0	76.5	27.2	96.0	38.0	111.0
N/SWN190	42.0	1610	115.0	76.7	27.6	115.0	38.0	130.0
N/SWN225	50.0	2012	127.0	89.9	33.5	115.0	42.0	142.0

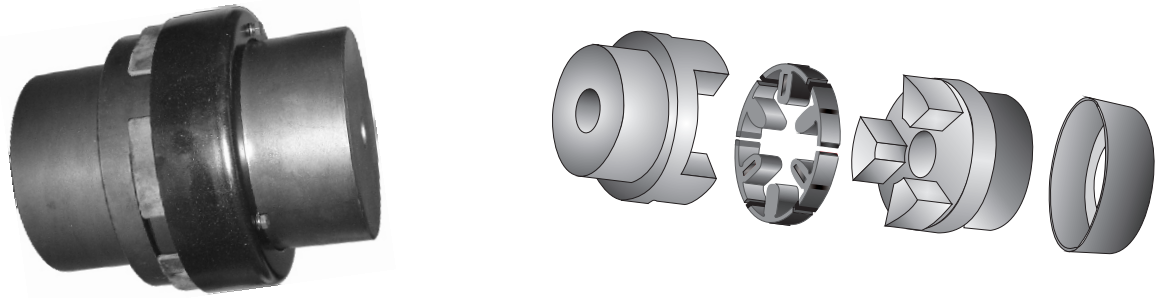
* R = Minimum clearance required to remove taper bush.



JAW TYPE 'CWN' COUPLING

'CWN' TYPE

Shaft to shaft jaw coupling with T-Insert elements and retaining collar. For higher power requirements than N or SWN series.



Part No.	Max Bore	Power at 100 RPM kW	Nominal Torque (Nm)			Normal Maximum Speed (RPM)
			Rubber Black	Polyurethane		
			80 Sh A	80 Sh A	90/92 Sh A	
CWN226	70.0	3.424	327.0	425.0	510.0	4200
CWN276	75.0	5.571	532.0	675.0	810.0	4200
CWN280	80.0	8.188	782.0	1075.0	1290.0	3000
CWN295	95.0	13.393	1279.0	1625.0	1950.0	2300
CWN2955	105.0	22.325	2132.0	2750.0	3300.0	2300
CWN300	105.0	31.906	3047.0	3800.0	4575.0	2100
CWN350	115.0	45.110	4308.0	5100.0	5740.0	1800

Power at 100 RPM based on Rubber 80 Shore A (Black)

CWN / CWS T-Insert



Special T-Insert designed for ease of installation and removal.

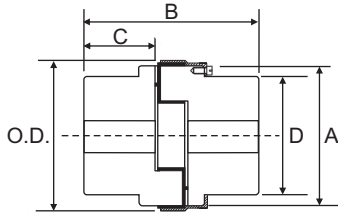
Available in standard rubber spider upon request..

CWN Element





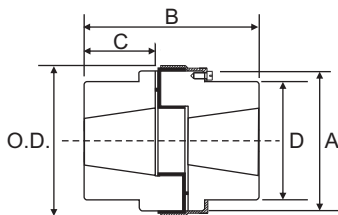
JAW TYPE 'CWN' COUPLING



Part No.	Bore		A	B	C	D	Collar O.D.
	Min	Max					
CWN226	25.0	70.0	137.0	178.0	70.0	119.0	150.0
CWN276	25.0	75.0	157.0	200.0	80.0	127.0	170.0
CWN280	30.0	80.0	192.0	200.0	80.0	140.0	205.0
CWN295	40.0	95.0	237.0	238.0	95.0	162.0	251.0
CWN2955	50.0	105.0	237.0	264.0	108.0	180.0	251.0
CWN300	50.0	105.0	254.0	283.0	115.0	180.0	266.0
CWN350	50.0	115.0	305.0	309.0	128.0	200.0	317.0

CWN226-CWN295 - Set of 6 T-Inserts
 CWN2955-CWN350 - Set of 10 T-Inserts

HUBS TO SUIT TAPERED BUSHES



Hub Type J Hub Type H

Couplings can comprise of any combination of H type or J Type hubs.

Part No.	Bore Max	Taper Bush Size	A	B	C	D	R*	Collar O.D.
CWN226	50.0	2012	137.0	106.0	34.0	115.0	48.0	150.0
CWN276	60.0	2517	157.0	134.0	47.0	124.0	48.0	170.0
CWN280	60.0	2517	192.0	134.0	47.0	124.0	48.0	205.0
CWN295	75.0	3020	237.0	154.0	53.0	159.0	55.0	251.0
CWN2955	75.0	3020	237.0	154.0	53.0	180.0	55.0	251.0
CWN300	75.0	3020	254.0	156.0	53.0	180.0	55.0	266.0
CWN350	90.0	3535	305.0	231.0	89.0	200.0	67.0	317.0

* R = Minimum clearance required to remove taper bush

CWN226-CWN295 - Set of 6 T-Inserts
 CWN2955-CWN350 - Set of 10 T-Inserts