

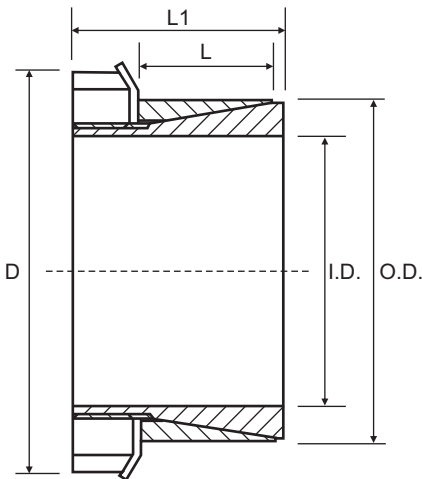


CAL13S (Self-Centering)

Consists of two cone rings, joined through a lock nut and a tab washer. In virtue of the simple design, very fast assembly/disassembly is possible. CAL13S is suitable for applications with medium to low torques. CAL13S is very similar to the standard CAL9, but is manufactured in a longer execution. Available for shaft diameters from 14 to 60 mm.

Characteristics

Medium-low torque
Restricted hub diameter
Quick installation
Economical



Part No.	I.D.	O.D.	L	L1	D	Torque Nm	Axial Force N
CAL13S-14/25	14	25	23	31	32	72	9000
CAL13S-15/25	15	25	23	31	32	77	9000
CAL13S-16/25*	16	25	20	30	32	73	9000
CAL13S-18/30	18	30	24	33	38	125	13000
CAL13S-19/30	19	30	24	33	38	132	13000
CAL13S-20/30	20	30	24	33	38	139	13000
CAL13S-24/35	24	35	29	38	45	202	15000
CAL13S-25/35	25	35	29	38	45	210	15000
CAL13S-28/40	28	40	34	40	52	312	20000
CAL13S-30/40	30	40	34	40	52	335	20000
CAL13S-32/45	32	45	34	45	58	442	25000
CAL13S-35/45	35	45	34	45	58	483	25000
CAL13S-40/50	40	50	35	46	65	696	31000
CAL13S-45/55	45	55	35	47	70	902	36000
CAL13S-48/60	48	60	35	47	75	991	37000
CAL13S-50/60	50	60	35	47	75	1014	37000
CAL13S-55/65	55	65	36	48	80	1158	38000
CAL13S-60/70	60	70	36	50	85	1379	41000

* Discontinued size, Limited stock available
All dimensions in mm unless otherwise stated

Torque = Maximum transmittable torque when axial force is zero.

Axial Force = Maximum axial force when transmittable torque is zero.

For CAL13S use the following tolerances

h8 for the shaft

H8 for the hub

Locking Bush Conversion Chart

SIT (CAL)	TOLLOK (TLK)	Lovejoy (SLD)	MAV	RINGFEDER (RFN)	RINGBLOK	BIKON	COMPOMAC (Conex)	KTR (Clampex)
CAL1	200	1500	2005	7012	1120	4000	A	100
CAL2	300	350	3003	8006	1060	5000	C	150
CAL3	110	1900	5061	7110.1	1100	8000	B	250
CAL4	450	2600	4061	7005	1800	1012	F	400
CAL5A	130		6901	7004	1300.1	7000A	D	200
CAL5B	131		6902	7007	1300.2	7000B	E	201
CAL6	132	1850 1350	1062	7013.0 7003	1710	1003	DS	203
CAL7	133	1750 1450	1061	7013.1 7006	1720	1006	ES	206
CAL8	134		3061		2400	1506	EP	225
CAL9	250		3505		1500C	5500SP	H	125
CAL10	500		1004	7020	1600	9500	M	700
CAL11S	603	900	2008	4071	2200.01	1029.71	SD	603
CAL12S	139		4005	9009	1000	4500	L	90
CAL13S	250L		3705		1500	5500S	I	125.1
CAL15	350			7061				105

External diameters and torque ratings may vary between suppliers

